

# THE PIPELINER

Portland – Montreal Pipe Line System • Spring/Summer 2010

## Pier 2 Work

### Approach Pier Deck Rehabilitation Project

Work is underway to repair the concrete deck of the Pier 2 Approach Pier. The Approach Pier was constructed in 1941 as part of the Todd-Bath Shipyard, and was purchased by PMPL in 1956 and converted for marine terminal use by the addition of the berthing pier extension. Salt, weather, and traffic have taken their toll on the original concrete and steel, such that the deck and support beams need to be replaced to maintain safe access between the shore and the berthing pier operations. During the work, operation of the unloading facilities will continue without interruption, and one traffic lane on the Approach Pier will remain in service at all times. For efficiency and debris control over the harbor, the old deck and beams are being saw-cut and removed in sections, and new beams and decking are being cast in place. The repairs will be completed incrementally over several years, and build on the successful repair of the Approach Pier headwall structure in 2006.

#### IN THIS ISSUE:

Views from the Corner Office	Page 2
Operational Results	Page 2
Right-of-Way Mgmt. System	Page 3
Arc Flash	Page 3
Engineering Drawing Mgmt. System	Page 3
Portland International Jetport Work	Page 4
Pile Coating	Page 4
Homeport	Page 5
Employee Spotlight	Page 5

## PMPL Directors

We are pleased to introduce three new directors to the Montreal Pipe Line and Portland Pipe Line Boards, T. J. Adams (Tim), R. D. (Robert) Houle and J. G. (John) Doll.

Tim Adams is Vice-President, Business Development and Joint Interest, ExxonMobil Pipeline Company in Houston, Texas. Prior to assuming his current position in 2007, he was the Managing Director of International Marine Transportation Ltd. in the United Kingdom. Mr. Adams has over 28 years of experience, having held a variety of operational, commercial and managerial positions with ExxonMobil affiliates in Texas, Virginia, Abu Dhabi, Hong Kong and the United Kingdom. He joined ExxonMobil in 1982 and holds a bachelor's degree in Petroleum Engineering and a master's degree in Business Administration. Mr. Adams was elected to the PMPL Boards on June 14, 2010.

Robert D. Houle is Manager Commercial Development, Distribution for Shell Canada Limited. After studying Industrial Psychology at the University of McGill, he joined Gulf Canada in 1982 and worked in operations at the Montreal refinery. He joined Shell Canada in 1986. During his tenure with Shell Canada, he has worked at the Montreal refinery in operations and in the economics and scheduling department where he was in charge of refinery scheduling, oil movements and product blending. He moved to Calgary in 1997 to work in the Supply & Trading organization where he worked as Senior Supply Coordinator for Eastern Canada. In 2001, he returned to Montreal to become Manager of Marine & Road Transportation for Quebec and Atlantic provinces. In 2007, with Shell Canada's integration into Royal Dutch Shell, he became Commercial Development Manager for the Canadian Distribution terminals. Mr. Houle was appointed to the PMPL Boards on March 8, 2010.

John G. Doll was elected to the Board of Montreal Pipe Line Limited on April 13, 2010, and to the Board of Portland Pipe Line Corporation on April 26, 2010. He is Joint Interests Director for Shell Pipeline Company, LP, based in Houston. We look forward to sharing more about Mr. Doll in our next publication.

# Views from the Corner Office

Dear Fellow Employees,

At PMPL, we have had a busy winter and spring, planning our year's and beyond work and getting it started.

Our triennial external PMIMS assessment of our safety and environmental programs has been completed by a team of four experts from our shareholder companies and they had nothing but praise for the knowledge and commitment of the people working at PMPL to safety and the environment. We received a score of 3.95 out of 4 for our systems and performance. The American Petroleum Institute also recognized our environmental performance, awarding us the Small Operator Environmental Performance Award.

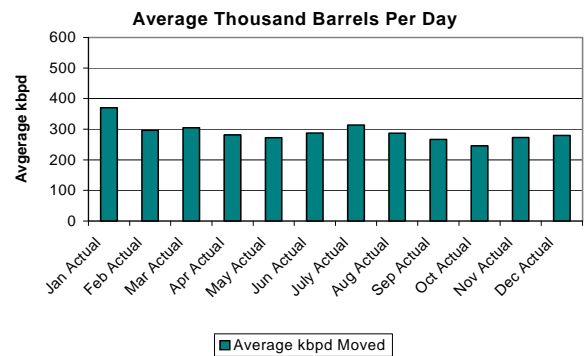
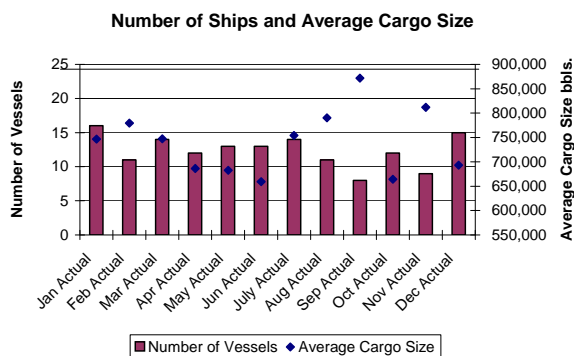
As you will read in these pages, we completed a line cutout and relocation at the Jetport to support the Jetport's environmental and expansion work. Work is ongoing on the geographic information system (GIS) that is allowing us significant efficiencies in line locates as well as doing amazing things in allowing us to organize and correlate line data. Digitizing drawing progresses. Significant work is planned in rehabilitating the deck of the approach pier, as well as many other projects.

In the late winter, we received the disappointing news that Royal Dutch Shell had made the decision to shut down their Montreal refinery. They are still in the planning stages of the shutdown and the logistics for continuing to supply their costumers. We are working with them in this planning, as well as working on a number of other potential opportunities. These are very dynamic times.

Get out and enjoy the lovely summer weather. Be safe.

*Handwritten signature: Mary D*

## Operational Results for 2009



## **Right-of-Way Management System**

As reported in our last newsletter, PMPL is in the process of upgrading its Right-of-Way (ROW) database, with the first phase consisting of the implementation of a Geographic Information System (GIS) to centralize and archive related pipeline data. In 2010, work is underway to standardize the ROW systems, which includes improving controls around ROW procedures and crossings; improving access and standardizing easement files; and consolidating the Public Awareness Program (PAP) and third party contact records. This new ROW Management System will integrate the GIS, paper landowner files, Public Awareness Program and approved/unapproved crossing documentation into an integrated system. The completion of this project will assimilate PMPL's existing ROW, GIS and PAP systems into a centralized program, which will be stewarded in a new, comprehensive ROW manual containing procedures on how GIS and ROW information is maintained, and the process to follow in future updates to the system.

## **Awards**

In April, Portland Pipe Line Corporation was awarded the American Petroleum Institute's (API) Environmental Performance Award at the 61<sup>st</sup> Annual Pipeline Conference in New Orleans. This award is presented to companies with a track record of stellar environmental performance. PPLC won for the small operator category, and this is the second year in a row that PPLC has received this honor. In May, Montreal Pipe Line Limited was awarded the Group 1 Safety Award from the Canadian Energy Pipeline Association.

## **Arc Flash**

Arc flash is a hazardous condition associated with the release of energy caused by an electric arc. PMPL has initiated a multi-year, three phase project to mitigate arc flash potential and ensure the safety of workers. Phase 1 of the project consisted of collecting system electrical data for computer modeling, through a combination of field surveys of circuits and protective devices; developing one-line diagram drawings; and preparing bid specification documents to be used in Phase 2 of the project. Phase 2, which is underway, includes bidding the project and selecting a vendor to perform computational analysis, provide recommendations to mitigate potential arc flash, and supply sufficient data to label equipment and identify hazards. Once Phase 2 is completed, Phase 3 will entail using the information gathered in the previous two phases to determine equipment replacement and modifications to reduce the risk of arc flash and to continue implementation of safety procedures and labels.

## **Engineering Drawing Management Program**

The Engineering Department has developed an Engineering Drawing Management Program, which provides a centralized location to store digital copies of PMPL's drawings, which include right-of-way land surveys, alignment sheets, manifold and pipe drawings. This program was implemented in early 2009, and continues to develop as a method to maintain facility asset integrity and provide guidance on the storage and review process for both critical and non-critical PMPL drawings. The program will not only enable system-wide retrieval of drawings via digital means, but will also enable a more effective communication between the Operation and Engineering Departments to confirm the current status of equipment as depicted in drawings.

# Portland International Jetport

In 2010, PMPL's 18-inch main line was affected by the Portland International Jetport's reconstruction and expansion of its existing aircraft de-icing apron. The surface grade and thick pavement of the expanded apron made it necessary to lower a 580-foot section of the 18-inch main line, and to remove several hundred feet of the abandoned 12-inch main line that serves as PMPL's cathodic protection anode. In order to meet the Jetport's tight timeline while minimizing the pipeline shutdown and operational impacts, PMPL elected to meet the project's needs with a pipeline replacement, rather than relocation. New pipe with fusion bonded epoxy (FBE) factory coating was procured over the winter. Welding, nondestructive examination (NDE), and hydrostatic testing of the replacement pipe was completed in March and April, in advance of the pipeline shutdown. The pipeline was then shut down and drained in April, and the existing pipeline in the apron expansion area was cut out and removed. The tested new pipe was then installed, tied-in, and radiographed successfully. The work was completed and the pipeline restarted in five days, well ahead of schedule compared to the planned eight-day shutdown. Joint coating, cathodic protection installations, sand padding and backfill were then completed. For the remainder of the spring and summer, the Jetport will be proceeding with construction of the concrete apron expansion and associated de-icing chemical handling facilities, and PMPL will continue coordinating the work with the Jetport to ensure the ongoing integrity of the pipeline.

## PMIMS

PMPL completed an external PMIMS (Portland-Montreal Integrity Managing System) assessment in April, with four assessors representing our shareholder companies visiting both PMPL's Canadian and U.S. facilities. The assessors commented favorably on PMPL's ability to sustain the implementation and effectiveness of the Managing Systems and PMIMS received a higher score than any previous reviews (3.95 out of 4.0). The assessors found no gaps, and offered a number of ideas for continuous improvement to our managing systems that we look forward to implementing.

## Pier 2 Work (cont'd from Page 1)

### Pile Coating

Work is also underway beneath the vessel berthing section of Pier 2. The 213 steel pipe piles installed in 1956 are receiving a new epoxy coating for protection against corrosion in the marine environment, to ensure the continued strength of the pier for safe berthing of large vessels. The piles are being recoated between the underside of the concrete superstructure and 2 feet below the high tide line. Ultra-high pressure water jetting is being used to remove salts, deteriorated coating and rust; no abrasive blast media waste is being generated, and the coating debris is being captured for proper disposal. The epoxy coating system is then being spray-applied before the next high tide cycle. The 84 piles installed during the 2002 Pier 2 upgrade are not included in this work, as their original factory-applied coatings are still in good condition. The pile coating work is expected to be completed by the end of this summer.

# Homeport

We are pleased to debut a new feature in *The Pipeliner*, the Employee Spotlight. Each edition will feature a different pipeline employee. We hope you enjoy this initial spotlight on Mike Millett.

## Employee Spotlight on – Michael Millett

Michael (Mike) Millett, PMPL's Maintenance Supervisor – Pump Stations, has an official hire date of September 6, 1977 with the Company. He actually started his career with the pipeline a decade earlier, helping his father, a PMPL contractor. Mike is a person who prefers the country life over the city, and he has great appreciation for the work and life that PMPL has provided. He recalls writing a thesis in his high school senior year of what he planned to do as a career in his life, and he was right on the money – his thesis had him working for PMPL.

Mike is family-oriented, and he and his wife Kathy have been blessed with five children. Though Mike is originally from Maine, after nearly 26 years in New Hampshire he now considers the Granite State his home. He has a varied interest in hobbies, such as hunting and kayaking, and enjoys the outdoors. He has played Santa Claus for his local Veterans of Foreign Wars (VFW) for the past fifteen years. The Toys for Tots organization he and Kathy participate in was originally started over 50 years ago in the basement of a former PMPL employee's home. This program works year-round with cookouts, donation drives and motorcycle rides and provided toys for over 470 children in 2009. Mike and Kathy also initiated the first Santa Claus at PPLC's holiday party in 2006, which has continued.

Looking back on his career here at PMPL, Mike has only good feelings, noting that it has been "a really good ride," and that the "quality of people here is something else."

## Milestones:

*The following are recent employee milestones:*

**Chris Esty**, Pipeline Controller, 5 years, June 17, 2010.

**Tim Hendrix**, Director of Safety and Environmental Protection, 20 years, February 1, 2010.

**Dale Paschal**, Maintenance Technician, 20 years, May 29, 2010.

**Jeff Withers**, Operations Supervisor, 10 years, June 12, 2010.

## Welcome to:

**William Walsh**, Casual Laborer, who joined PMPL's team effective June 17, 2010.

## Congratulations to:

**Peter Fickett**, trained as Relief-Controller, effective December 2009.

**Lindsey Ramsdell**, promoted to Accountant 1, effective April 1, 2010.

## In Memoriam

*Our sympathy goes out to the families and friends of:*

**Spear, Dorothy** (1929 – 2010), who passed away August 30, 2009, widow of Willis Spear, annuitant and former PMPL employee.



Portland Pipe Line Corporation  
Montreal Pipe Line Limited  
Safety, Environment, Customer, Community