

INTEGRATED CONTINGENCY PLAN

FOREWORD

INTEGRATED CONTINGENCY PLAN

Portland Montreal Pipe Line (PMPL)

This Plan satisfies the following regulations / guidelines:

- U.S. EPA 40 CFR Part 112 (OPA 90)
- U.S. EPA 40 CFR Part 112.5 (SPCC)
- U.S. EPA 40 CFR 264 (RCRA)
- U.S. DOT 49 CFR 194 (OPA 90)
- USCG 33 CFR Part 154 (OPA 90)
- OSHA 29 CFR 1910.38(a) (Emergency Action Plan)
- OSHA 29 CFR 1910.120 (HAZWOPER)
- NEB (CER) Onshore Pipeline Regulations (SOR 99/294)
- Oil and Gas Occupational Safety and Health Regulations (SOR 87-612)
- Guidelines for Filing Requirements of the Canada Energy Regulator
- CAN/CSA-Z731-03 Emergency Preparedness and Response
- Planning of the emergency measures to ensure the safety of the workers: Guidance document for the development of emergency measures plan for the Industry, CSST

Prepared for:

PORTLAND PIPE LINE CORPORATION (PPL)

30 Hill Street

South Portland, ME 04106

and

MONTREAL PIPE LINE LTD (MPL)

10803, Sherbrooke St. East

Montreal (Quebec) H1B 1B3

24 Hour Emergency: 1-866-253-7351 (U.S.)

1-888-977-4589 (CANADA)

Copy # _____

INTEGRATED CONTINGENCY PLAN

ACKNOWLEDGMENT AND PLAN APPROVAL


The information and procedures in this Plan must be treated as guidelines only. The user should determine to what extent it is practical and advisable to follow them. This decision may involve considerations not discussed in this Plan.

I certify that the information and procedures contained herein are considered to be accurate and true as of this date, and that the accidental spill measures described in this document will be implemented as described. The information and procedures contained herein are also consistent with the U.S. National Contingency Plan (NCP) and applicable Area Contingency Plans (ACP) as detailed in Section 1.5. The information and procedures contained herein are consistent with regulations from the Canada Energy Regulator.

Further, on behalf of Portland Montreal Pipe Line, I hereby certify that the individuals identified as Qualified Individual and Alternate Qualified Individual in this plan have the full authority in accordance with the applicable federal and provincial regulations and this plan to:

1. Activate and engage in contracting with oil spill removal organizations,
2. Act as a liaison with the pre-designated federal and/or provincial authority,
3. Obligate funds required to carry out response activities.

Plan Approved:



J.C. Gillies

**Qualified Individual (United States and Canadian Assets)
Portland Pipe Line Corporation
Montreal Pipe Line Limited**

Date: March 1, 2024

NOTE: Witt O'Brien's, formerly O'Brien's Response Management, Inc., provided consulting and plan development services in the preparation of this plan utilizing data provided by Portland Pipe Line Corporation, Montreal Pipe Line Limited and/or the Facility. Witt O'Brien's assumes no liability for injury, loss, or damage of any kind resulting directly or indirectly from the use of the regulatory interpretation, response planning, or information contained in this plan.

INTEGRATED CONTINGENCY PLAN

PMPL Policy on Response to Spill, Fire/Explosion or Medical Emergencies

PMPL is committed to devoting all required resources to planning its response to possible hazardous material, hazardous waste and oil spill incidents or fire/explosion incidents and to developing a comprehensive Integrated Contingency Plan.

PMPL is committed to an ongoing review of this response plan and to its revision when necessary in order to adapt to changing conditions and/or technical advancements.

PMPL is committed to periodic exercise of its plan and to providing the training necessary for its employees and associates to effectively and efficiently carry out all elements of the plans.

PMPL is committed to informing the public of the details of its response plan and to being responsive to inquiries by the public and news media regarding the plan. The procedures set forth in the PMPL Communications Manuals shall be followed as applicable.

PMPL is committed to timely public notification in the event of a spill.

PMPL will disclose to the public details of an emergency, as the verifiable facts become known.

PMPL is committed to following its policies on the environment, business ethics, security, and health and safety when responding to and informing the public of spill, fire or explosion emergencies it may experience.

INTEGRATED CONTINGENCY PLAN

TABLE OF CONTENTS

Regulatory Cross-references are included in Appendix A of this Plan.

	<u>Page</u>
EMERGENCY RESPONSE ACTION PLAN	
FOREWORD	
Title Page	i
Acknowledgment and Plan Approval	ii
Certification of Qualified Individual and Alternate Qualified Individual	ii
PMPL Policy on Response to Spill, Fire/Explosion or Medical Emergencies	iii
Table of Contents	iv
Appendices	viii
Revision Record	x
Distribution List.....	xiv
1.0 INTRODUCTION AND PLAN CONTENT	
1.1 Plan Purpose/Objectives.....	1-1
1.2 Scope of Plan	1-1
1.3 Plan Distribution Procedures.....	1-3
1.4 Plan Review and Update Procedures.....	1-4
1.5 Regulatory Compliance	1-7
1.6 Discharge/Emergency Classification	1-8
Figure 1.1 Incident Classification Criteria - Consequence	1-8
Figure 1.2 incident Classification Criteria - Management Level Required.....	1-10
Figure 1.3 Pipeline System Overview Map.....	1-12
Figure 1.4 PMPL System Information - General.....	1-13
Figure 1.5 South Portland Marine Terminal & Tank Farm Facility Diagram	1-16
Figure 1.6 Piping under USCG Jurisdiction	1-18
Figure 1.7 Facility General Information - SP Marine Terminal & Tank Farm.....	1-19
Figure 1.8 Facility Physical Description - Marine Terminal	1-21
Figure 1.9 Facility Physical Description - Main Line Pipeline	1-23
Figure 1.10 Facility Physical Descriptions - Pump Stations	1-24
Figure 1.11 Facility Phys. Desc. - Montreal-East Terminal & North Tank Field ..	1-32
Figure 1.12 Facility Information - Dates and Types of Expansions	1-36
2.0 NOTIFICATION PROCEDURES	
2.1 Notice of an Event.....	2-1
Figure 2.1 Spill Reporting Form & Checklist.....	2-3
Figure 2.1a Spill Reporting Form & Checklist Guidelines	2-4
2.2 Alarm Systems and Reporting.....	2-4

INTEGRATED CONTINGENCY PLAN

TABLE OF CONTENTS (Cont'd)

	<u>Page</u>
2.3 Internal Notification	2-5
Figure 2.2 Internal /External / SMT Notification Checklist.....	2-6
Figure 2.3 Internal Notification Sequence Flow Chart	2-8
Figure 2.4 Internal Notification- Facility Locations	2-9
Figure 2.5 Internal Notification- Montreal and Canada Callout List.....	2-9
Figure 2.6 Internal Notification- SP and US Mainline Callout List	2-10
Figure 2.7 Internal Notification- Spill Management Team.....	2-11
2.4 External Notification	2-15
Figure 2.8 External Notification Reference - US Federal	Notifications 2-17
Figure 2.9 External Notification Reference - Canada Federal	Notifications 2-20
Figure 2.10 External Notification Reference - Maine	Notifications 2-24
Figure 2.11 External Notification Reference - New Hampshire...	Notifications 2-31
Figure 2.12 External Notification Reference - Vermont	Notifications 2-35
Figure 2.13 External Notification Reference - Quebec	Notifications 2-39
Figure 2.14 External Notification Reference - Resources US	Resources 2-44
Figure 2.15 External Notification Reference - Resources Canada.	Resources 2-56
3.0 RESPONSE ACTIONS	
3.1 Initial Response Actions.....	3-1
3.1.1 Response Actions in Case of Fire or Explosion.....	3-2
3.1.2 North tank Field Specific Response Actions	3-3
3.1.3 Determination or Spill Volume and Extent	3-3
3.1.4 Toxicity of Hydrogen Sulfide.....	3-6
3.1.5 Emergency Operations Center	3-6
3.2 Stabilization of Emergency Site.....	3-9
3.2.1 Secure the Site.....	3-9
3.2.2 Initial Entry into Potentially Hazardous Areas	3-9
3.2.3 Containment Activities	3-11
3.3 Isolation of Release Source Point	3-11
3.3.1 Excavation.....	3-11
3.4 Post-Stabilization Activities	3-12
3.4.1 Demobilization of Response Team.....	3-12
3.4.2 Clean-up Activities.....	3-13
3.4.3 Restoration of Pipeline Service.....	3-13
3.5 Site Discontinuation	3-13
3.6 Rescue	3-14
3.6.1 Local Responders	3-14
3.6.2 General	3-14
3.6.3 Further Considerations	3-15
3.7 Vapor Control Procedures.....	3-15
3.7.1 Spill Avoidance.....	3-15
3.7.2 Vapor Avoidance	3-16
3.7.3 Vapor Detection.....	3-17
3.7.4 Spark and Flame Avoidance.....	3-19
3.8 Procedure for Emergency Involving Natural Gas	3-21
3.8.1 Receipt of Emergency Notice By Controller	3-22
3.8.2 Immediate Response Steps	3-22

INTEGRATED CONTINGENCY PLAN

TABLE OF CONTENTS (Cont'd)

	<u>Page</u>
3.0 RESPONSE ACTIONS	
3.8.3 Emergency Assessment and Control	3-22
3.9 Third Party Vessel Owners/Operators (South Portland Terminal)	3-23
3.10 Documentation of Initial Response Actions	3-23
3.11 Documentation of Incident	3-24
3.11.1 General Documentation Requirements	3-24
3.12 Initial Response Actions - Bomb, Hostage, Natural Disaster, Medical	3-27
3.12.1 Bomb Threat Procedures	3-28
3.12.2 Telephone Threat Procedures.....	3-29
3.12.3 Letter Threat Procedures	3-29
3.12.4 Suspicious Letter or Parcel Procedures	3-29
3.12.5 Hostage Crisis Procedures.....	3-29
3.12.6 Medical Emergency Procedures.....	3-30
Figure 3.1 Fire Emergency/Spill Response Checklist.....	3-32
Figure 3.2 Oil Slick Volume Estimator	3-42
Figure 3.3 Bomb Threat, Hostage Crisis, Natural Disaster, Medical Emergency Checklist.....	3-43
Figure 3.4 MSDS Crude Oil	3-48
Figure 3.5 MSDS Hydrogen Sulfide	3-56
4.0 RESPONSE TEAMS	
4.1 Introduction	4-1
4.2 Qualified Individual.....	4-2
4.3 Local Response Team (Level 1 and 2).....	4-3
4.4 Spill Management Team (Level 2 and 3)	4-3
4.5 Response Team Training.....	4-4
4.6 Response Team Exercises	4-8
4.7 Site Safety and Health Plan(s) Development	4-13
Figure 4.1 National Incident Management System Incident Command System (NIMS - ICS).....	4-15
Figure 4.2 Local Response Team	4-16
Figure 4.3 Spill Management Team	4-17
Figure 4.3b Canadian Response Unit.....	4-18
5.0 RESPONSE EQUIPMENT/RESOURCES	
5.1 Company Response Equipment.....	5-1
5.2 Equipment Testing	5-1
5.3 Other Company Resources.....	5-2
5.4 Contract Resources	5-2
5.5 Cooperative/Mutual Aid Resources	5-2
5.6 Marine Spill Response Corporation (MSRC).....	5-2
5.7 Experts and Consultants	5-2
5.8 Volunteers.....	5-2
5.9 Communications.....	5-3
5.9.1 Central Communications System	5-3

INTEGRATED CONTINGENCY PLAN

TABLE OF CONTENTS (Cont'd)		<u>Page</u>
5.9.2	Communications Equipment.....	5-3
5.9.3	Communication Types.....	5-4
6.0	SPILL IMPACT CONSIDERATIONS	
6.1	Critical Areas to Protect	6-1
6.2	Environmental/Socio-Economic Sensitivities.....	6-2
6.3	Wildlife Protection and Rehabilitation.....	6-4
6.3.1	Endangered/Threatened Species	6-4
6.3.2	Wildlife Rescue.....	6-5
6.3.3	Search and Rescue - Points to Consider	6-5
6.4	Staging Areas	6-6
6.5	Spill Volume Estimates	6-6
6.6	Trajectory Analysis.....	6-6
6.7	Containment and Recovery of Spilled Product.....	6-7
6.7.1	Spill on Land (soil surfaces).....	6-8
6.7.2	Spill on Lake or Pond (calm or slow-moving water)	6-9
6.7.3	Spill on Small to Medium Size Streams (relatively fast-flowing creeks).....	6-10
6.7.4	Spill on Large Streams and Rivers	6-12
6.7.5	Spill on Stream which Flows into Lake or Pond	6-14
	Figure 6.1 Environmental Sensitivity Maps.....	6-16
	Figure 6.2 Endangered/Threatened Species Listing.....	6-17
7.0	PPL / MPL SPECIFIC PLANS	
7.1	PPL Spill Prevention, Control and Countermeasure (SPCC) Plan.....	
7.2	MPL Oil Spill Specific Response Plans	7-1
	Figure 7.1 MPL Vulnerable Areas	7-3
7.2.1	Mississiquoi River	7-4
	- Figure 7.2 General Information	7-4
	- Figure 7.3 Environmental Socio-Economic Impact Sensitivities	7-8
7.2.2	Richelieu River.....	7-9
	- Figure 7.4 General Information	7-9
	- Figure 7.5 Environmental Socio-Economic Impact Sensitivities	7-12
7.2.3	St. Lawrence River	7-14
	- Figure 7.6 General Information	7-14
	- Figure 7.7 Environmental Socio-Economic Impact Sensitivities	7-16
7.2.4	Montreal East Terminal Emergency Procedures	7-20
	- Figure 7.8 Weather Information	7-20
	- Figure 7.9 Environmental Socio-Economic Impact Sensitivities	7-20
7.2.5	North Tank Field	7-20
7.2.6	Saint-Cesaire Pump Station.....	7-21
7.2.7	Highwater Pump Station.....	7-22
7.3	MPL Fire Control Facilities	7-23
7.3.1	North Tank Field	DWG D-4248
7.3.2	Highwater.....	DWG D-3835
7.3.3	St. Cesaire	DWG D-3834
7.3.4	Montreal East.....	DWG D-3833

INTEGRATED CONTINGENCY PLAN

APPENDICES

Page

A.	General Information	A-1
	<u>United States</u> Health and Safety, Security and Environmental Policies U.S. EPA 40 CFR Part 112 Cross-References U.S. EPA 40 CFR Part §112.3, 5, 7, 8 (SPCC) U.S. EPA 40 CFR Part 264 U.S. Coast Guard 33 CFR 154 Cross Reference U.S. DOT PHMSA 49 CFR 194 (OPA 90) OSHA Emergency Action Plans 29 CFR 1910.38(a) OSHA HAZWOPER 29 CFR 1910.120	
	<u>Canada</u> Onshore Pipeline Regulations (SOR 99/294) Expected Elements – Emergency Response Programs Continuing Education Programs Guidelines for Filing requirements of the NEB CAN / CSA-Z731-03 Emergency Planning for Industry Planification des mesures d’urgence pour assurer la securite des travailleurs Oil and Gas Occupational Safety and Health Regulations (SOR 87-612)	
B.	Response Team Job Descriptions	B-1
C.	Response Resources	C-1
D.	Evacuation Procedures.....	D-1
E.	Follow-up Investigation.....	E-1
F.	Disposal Plan.....	F-1
G.	Worst Case Discharge Analysis and Scenarios	G-1
	Introduction	
	<u>United States</u> Small/Average Most Probable Discharge Medium/Maximum Most Probable Discharge Worst Case Discharge USCG Discharge Volume Calculations U.S. EPA Discharge Volume Calculations U.S. DOT PHMSA Discharge Volume Calculations EPA Planning Distance Calculation “Oil Transport on Tidal Influence Areas”	
	<u>Canada</u> Canada Main Line Worst Case Discharge North Tank Field –Tank Fire with Risk of Boilover North Tank Field – Sequential Rupture of Two Tanks North Tank Field – Detailed Intervention Scenarios	

INTEGRATED CONTINGENCY PLAN

H.	Hazard Evaluation	H-1
	<u>United States</u>	
	Hazard Identification	
	Vulnerability Analysis	
	Analysis of the Potential for a Spill	
	Reportable Oil Spill History	
	Hazard Identification Table	
	Drainage Diagram	
	<u>Canada</u>	
	Analysis of Technological Risks and Worst Case Scenarios Involving Storage Tank Fires	
	Hazardous Materials Inventory	
	Sensitive Areas within a radius of the NTF	
I.	PMPL Main Line Information	I-1
	Figure I-1 Main Line Profile Drawing	
	Pipeline Valve Locations	
	United States	
	Canada	
J.	U.S. National Response System	J-1
K.	Miscellaneous Forms	K-1
	PMPL System Wide	
	Emergency Response Forms	
	Documentation	
	United States	
	Reporting Forms	
	Documentation	
	Canada	
	Reporting Forms	
	Documentation	
L.	Glossary of Terms/Acronyms	L-1
M.	Response Plan Cover Sheet (US Only)	M-1
N.	Regulatory Agency Correspondence and Other Agency Requirements	N-1

INTEGRATED CONTINGENCY PLAN

REVISION CONTROL RECORD

Note: It is the responsibility of the holder of this plan to ensure that all changes and updates are made. The holder shall:

- Remove and discard obsolete pages.
- Replace obsolete pages with the updated pages.
- Record each revision on this form.

Change Date	Affected Page Number(s)	Description of Change(s)	Name
March 2001	Entire Plan	Issuance of Plan	
March 2003	Entire SPCC	SPCC revisions	
October 2003	Pgs. ERAP-3, ERAP-5 thru ERAP-7, ERAP-12, ERAP-13, ERAP-18, ERAP-22, ERAP-23, ERAP-42, ERAP-56, ERAP-57, ERAP-58, ERAP-63, ERAP-64, ERAP-65, ii, vii, ix, 1-12, 1-19, 1-21, 1-22, 2-4 thru 2-10, Notifications 2-5, Notifications 2-6, Notifications 2-12, Notifications 2-16, Notifications 2-17, Resources 2-1, 3-6, A-1, A-3, A-4, A-7 thru A-25, C-1, C-3, C-5, C-6, C-11, C-12, C-25 inserts, H-1, remove page H-13, K-1, K-11 thru K-22, M-2, M-3	Miscellaneous revisions	
August 2004	Pgs. ERAP-6, ERAP-7, vii, x, 2-7, 2-9, 2-10	Annual update	
September 2004	Pgs. ERAP (all), vii, 2-7, 2-9 thru 2-11, Figure 2.4 Notifications, Figure 2.5 Resources	ICP update	
September 2004	ERAP Pg. 12, Notifications 2-4	Revision to State of Maine Reporting Requirements	
February 2005	Appendix C, Pages 15 – 19	Remove 300 lb. wheeled fire extinguishers from the Equipment for Fire Fighting Stations Lists	
January 2006	ERAP (entire section), Foreword (entire section), Section 1.0 (all except for Figure 1.1., page 1-10 and Figure 1.3, pages 1-15 and 1-16), Section 2.0 (entire section), Section 3.0 (entire section), Section 4.0 (entire section, remove Figure 4.4), Section 5.0 (entire section), Section 6.0 (replace pages 6-1 to 6-16, and 6-17 to 6-20, retain figures and maps), SPCC (replace new pages, retain maps in Section 9.0), Appendix A, (entire section), Appendix C (entire section), Appendix G (entire section, discard page G-13), Appendix L (replace page L-12 only)	Miscellaneous revisions	
March 2006	Appendix C – insert MSRC Major Equipment Eastern Region	Revision to Appendix C	
August 2006	ERAP (entire section), Foreword (entire section), Section 1.0 (entire section), Section 2.0 (entire section), Section 6.0 (entire section), SPCC (entire section), Appendix C, D, F, G and H (entire sections)	Miscellaneous revisions	
December 2006	Section 5 (Pgs. 5-3 and 5-4), SPCC (Foreword and Section 5), Appendix C (Pages C-3 and C-4), ERAP (Pages 56 and 57)	Miscellaneous revisions	

INTEGRATED CONTINGENCY PLAN

Change Date	Affected Page Number(s)	Description of Change(s)	Name
March 2007	Foreword (Pages vii – xii), Section 1.0 (Pages 1-11 and 1-12), Section 2.0 (Pages 2-17 to 2-20, 2-25 and 2-26, 2-31 and 2-32), Appendix C (Pages C-3 to C-4, insert pages C-6(a) and C-6(b)), Appendix K (Pages K-1, K-23 and K-24), ERAP (Pages 12-15, 20-21, 24-25, 56-59, and insert new page 89)	Clarified radio and vacuum truck locations in the facility; inserted state emergency response agencies and contact numbers; provided additional sample forms.	
September 2007	Foreword (Pages vii-viii), Section 2.0 (Pages 2-7 to 2-10); Appendix K (Pages K-1 and K-16, additional pages inserted after K-16 as noted); ERAP (Pages 6-7).	Revised to update the Spill Management Team roles and titles, and to insert the National Incident Management System Incident Command Forms.	
September 2009	Entire Plan	Incorporation and integration of Montréal Pipe Line Emergency Response plan in its entirety. Revised Section 1.0 Facility location descriptions, Section 2.0 notification lists, Section 3.0 response checklists and actions, Section 4.0 SMT members, Section 7.0 SPCC to add tank dike changes and mobile fueling tank. Also revised Appendix A regulatory cross reference page references, Appendix B response team descriptions for pre-incident and SMT roles, and in Appendix K added updated forms. Created separate binders for environmental and associated response maps (See Figure 6.1) previously contained in manual.	
December 2009	Foreword (pages xi – xvi), Section 1.0 (Page 1-5), Section 2.0 (Page 2-18 and Page 2-46), and Section 4.0 (Page 4-17).	Revised Foreword to update various mailing addresses and indicate if plan is received electronically; Revised Section 1.0, Page 1-5 to indicate requirement to notify DOT/PHMSA in the event of a material change in the Facility's spill prevention and response procedures; Revised Section 2.0 Pages 2-17 and 2-18 to provide updated information on DOT reporting requirements and Page 2-46 to provide current aviation contractor contact information; Revised Section 4.0, Page 4-17 to update Figure 4.3 with current contact information.	

INTEGRATED CONTINGENCY PLAN

Change Date	Affected Page Number(s)	Description of Change(s)	Name
March 2011	Foreword (pages xvii to xxii), Section 1.0 (Pages 13, 19, 24, 31), Section 2.0 (Pages 7, 11-13, 17-20, 23 -26), Section 3.0 (Pages 15 and 22), Section 4.0 (Pages 3-4, 17) ; Section 6.0 (Pages 1, 17-19, 25-30); Section 7.0 (Pages FWD-iva to FWD-vi, 1-1, 1-4 to 1-5, 4-1 to 4-2, 5-1 to 5-2, 6-1, 7-1, 9-1 to 9-4 and drawings D-4925 and D-4927); Appendix A (Pages 3-12) ; Appendix C (Pages 1-2, 21-22, 25-26, 29-32, and 53-127) ; Appendix H (Pages 5-8) ; Appendix K (Pages 1-2, 6-38) ; MPL Emergency Response Mapping, Section 2.1 Glen Sutton Block Valve Site.	Revised Foreword to include Fire Chiefs along the Right of Way in the distribution list; revised Section 1.0 for address changes and to update equipment at St. Cesaire; revised Section 2.0 to add NRDA reference in Figure 2.2, add additional recommendations under external notifications, and update personnel names and contact information throughout Section; revised Section 3.0 to indicate factor is nautical miles, not meters and modify 3.2.2; revised Section 4.0 to indicate response times for LRT and SRT and update Figure 4.3; revised Section 6.0 to update endangered species; revised Section 7.0 to update the tank dike status subsequent to tank work completion and to clarify regulatory compliance; revised Appendix A to update Cross Reference to align with changes made in Section 4.0, and update the header to reflect the correct cross reference; revised Appendix C to provide updated contractor and equipment information; revised Appendix H to update vulnerability analysis information; revised Appendix K to insert the Media Inquiry Log and update pagination; revised MPL Emergency Response Mapping to revise the Glen Sutton Block Valve Site drawing.	
December 2011	Foreword (entire section), Section 1.0 (pages 1-1 to 1-10; 1-19 to 1-20), Section 2.0 (entire section – note that some pages were pagination changes only), Section 3.0 (pages 3-1 to 3-2, 3-7 to 3-8, 3-13 to 3-16, 3-37 to 3-38), Section 4.0, Section 7.2 pages 7-9 to 7-18; Appendix A (pages A-1, A-13 to A-36 (note pages A-15 to A-36 were pagination changes only), Appendix H (page H-25).	Revised Foreword to include hazardous waste and updated Table of Contents, to provide current Acknowledgement and Plan Approval, and to include additional recipients; revised Section 1.0 to include references to hazard waste requirements, revised Section 2.0 to reference hazard waste and Emergency Coordinator, revised Section 3.0 to reference hazard waste and Emergency Coordinator, Section 7.2 revised contact information; Appendix A to insert reference to U.S. EPA Hazardous Waste 40 CFR Part 264; revised Appendix H to update contact information.	

INTEGRATED CONTINGENCY PLAN

Change Date	Affected Page Number(s)	Description of Change(s)	Name
November 2012	Foreword (Pages i-ii,v-vi, xiii-xxv), Section 1.0 (Pages 1-3 to 1-4,1-7 to 1-14, 1-17 to 1-24, 1-31 to 1-37). Section 2.0 (Pages 2-3 to 2-63). Section 3.0 (Entire Section). Section 4.0 (Pages 4-3 to 4-6, 4-11 to 4-12, 4-17 to 4-18). Section 5.0 (Pages 5-3 to 5-4 ; Section 6.0 (Pages 6-9 to 6-10, 6-21 to 6-24). Section 7.0 (Pages FWD-I to FWD-ii, FWD-vi to 9-10, MPL 7-1 to 7-24). Appendix B (Pages B-3 to B-4, B-9 to B-10, B-23 to B-24). Appendix C (pages C-1 to C-26, C-75 to C-126). Appendix E (Pages E-1 to E-2). Appendix F (Pages F-3 to F-4, F-9 to F-10). Appendix K (Entire Section). Appendix M (Entire Section).	Revised entire manual for administrative changes; Revised Forward for manual distribution list and table of contents; Revised Section 1.0 for addition of CAN/CSA Z731-95 determination of an emergency, and to reflect 18" main line deactivation and tank storage capacity; Revised Section 2.0 to address removal of Shell Security in Montreal, updated external notification procedures; Revised Section 3.0 to remove Shell Security in Montreal and update crude oil and hydrogen sulfide MSDS; Revised Section 4.0 US response unit and added Canadian response unit; Section 5.0 revised to remove company pagers; Section 6.0 revised to updated Endangered/Threatened species lists; Section 7.0 revised to add additional emergency number, updated Log of Plan Review and Amendments and Canada specific reporting requirements;	
December 2013	Foreword (Pages xiii-xxvi); Section 1.0 (Pages 1-1 to 1-4, 1-7 to 1-14, 1-19 to 1-24, 1-37 to 1-38); Section 2.0 (Pages 2-1 to 2-18, 2-21 to 2-22, 2-25 to 2-28, 2-31 to 2-36, 2-39 to 2-40, 2-47 to 2-50, 2-55 to 2-60); Section 3.0 (Pages 3-47 to 3-66; Section 5 (Pages 5-1 to 5-4); Section 7 (Pages FWD-vi to FWD-vi and MPL 7-11 to 7-12); Appendix B (Pages B-13 to B-14, B-#5 to B-38); Appendix C (Pages C-3 to C-6, C-21 to C-22, C-87 to C-88, C-125 to C-126); Appendix D (Pages D-3 to D-4); Appendix I (Pages I-5 to I-26); Appendix K (Pages K1 to K-2, K-19 to K-59); Appendix M (M-1 to M-2)	Revised entire manual for administrative changes. Section 1 CSA Z731-03, added 24 hour toll free emergency number, updated daily throughput and storage, documented to NTF tanks removed from service. Section 3 updated Crude Oil MSDS. Section 5 added reference to Section 1 for directions to all PMPL owned response equipment. Appendix B added role and responsibility of the NEB. Appendix C updated to reflect current equipment inventory and locations. Appendix D added reference to PMPL Hazardous Material MSDS Inventory. Appendix I revised to reflect current mainline valve configuration including additional MOVs. Appendix K removed expired PHMSA Form 7000-1 and added instructions to 12-2012 Form 7000-1 online submission. Appendix M administrative changes.	
November 2014	Foreword (Pages i-ii, xi-xxii); Section 1.0 Pages 1-3 to 1-6, 1-13 to 1-20; Section 2.0 Pages 2-5 to 2-14, 2-45 to 2-54; Section 4.0 Pages 4-7 to 4-8 and 4-17 to 4-18; Appendix A Pages 17-18; Appendix C Pages 25-28; Appendix G Pages 3-4	Revised manual for administrative changes. Qualified Individual updated; Internal notifications procedures and personnel administrative changes to align with current SMT; Added language request by DOT-PHMSA during 5-year approval letter; Updated Figure 1.6 and Appendix A as requested by U.S. Coast Guard; Updated MSRC Atlantic Region equipment list to align with August 2014 revision.	

INTEGRATED CONTINGENCY PLAN

Change Date	Affected Page Number(s)	Description of Change(s)	Name
January 2016	Foreword (Entire Section); Section 1.0 Pages 1-6, 1-18, 1-19, 1-34 to 1-40; Section 2.0 Pages 2-9 to 2-12, 2-27, 2-33, 2-46, 2-50, 5-52, 2-58; Section 3.0 Pages 3-38, 3-39, 3-47 to 3-66; Section 4.0 Pages 4-7, 4-17, 4-18; Section 6 Figure 6.2; Section 7.0 Pages FWD-vii, 9-3 to 9-7, 7-2, 7-17, 7-21, 7-22; Appendix B Pages B-2 to B-5, B-11 to B-14, B-37 to B-38; Appendix C Page C-3; Appendix E Entire Section; Appendix F Pages F-3, F-14; Appendix I Page I-20; Appendix L Page L-13; Appendix M Page M-3	Revised entire manual for administrative changes. Revised Section 1.0 to reflect changes to North Tank Field operations; Revised Section 2.0 for administrative personnel changes; Revised Section 3.0 to reflect changes to North Tank Field operations, update English Crude Oil and Hydrogen Sulfide SDS, add French Crude Oil and Hydrogen Sulfide SDS; Revised Section 4.0 for administrative changes to the PMPL SMT; Updated Section 6 Figure 6.2 to reflect updated endangered/threatened species in AOR; Revised Section 7.0 to reflect changes to PPLC owned rectifiers, administrative changes, and to reflect surface water retention at SC and HW pump stations; Appendix B revised for administrative changes; Appendix C revised to add SP hazmat spill kit; Appendix E, F, I, L, M revised for administrative changes	
August 2016	Foreword (xviii); Section 2.0 Pages 2-36 to 2-37; Section 6.0 Pages 6-7 to 6-8	Updated PHMSA contact information for manuals 43 and 44 on the distribution list; Amended the notification procedures in Vermont to remove 9-1-1 and added direct ten-digit 24-hour numbers for external notifications; Amended plan to include procedures for obtaining required permissions for using alternative response strategies.	
March 2017	Foreword Pages xix, xx, xxii; Section 2.0 Pages 2-9, 2-12, 2-13, Section 4.0 Page 4-17; Appendix C Pages C-21, C-22, C-26;	Revised entire manual for administrative changes. Revised Section 4.0 PMPL SMT Team updated to reflect positions of ICS structure, without internal and external personnel names; Revised Appendix C to reflect MSRC USCG NFO Classification and the idled Maine Responder;	
March 2018	Foreword Pages xiv, xvii-xviii, xix, xxi-xxiv; Section 1.0 Pages 1-8, 1-26 to 1-27; Section 2.0 Pages 2-10 to 2-12, 2-17, 2-26, 2-33, 2-36, 2-47, 2-58 to 2-60	Revised to reflect administrative changes in personnel and correct typos	
November 2019	Foreword Pages xv-xxi; Section 1.0 Pages 1-2, 1-6 to 1-11, 1-15 to 1-16, 1-21 to 1-25; Section 2.0 Pages 2-6 to 2-13, 2-20 to 2-21, 2-39; Section 7.0 Pages 1-1, 9-5 to 9-6, 7-1 to 7-3; Appendix A Pages A-30 to A-35; Appendix C Pages C-3 to C-4; Appendix M Pages M-2 to M-3	Revised entire manual for administrative personnel changes and regulatory agency name changes. Appendix C was updated to reflect current resources	
November 2020	Foreword Pages ii, xiv, and xvi-xxiii; Section 1.0 Pages 1-4, 1-10, 1-15, 1-21; Section 2.0 Pages 2-6 to 2-15, 2-25, 2-32, 2-35; Section 3.0 Pages 3-3, 3-28, 3-29, 3-38; Section 4.0 Pages 4-3, 4-5, 4-7, 4-8, 4-11, 4-16; Section 7.1 Pages V and 1-3; Section 7.2 Page 7-21; Appendix B Pages B-2, B-3, B-36, B-37; Appendix C Page C-18; Appendix E Page E-2; Appendix F Page F-4; and Appendix M Page M-3	All Sections were updated for administrative title, name and phone number updates; the Qualified Individual and Emergency Coordinator has been changed, Changes to the North Tank Field Fire Protection system and response have been added, OSRO major equipment list has been updated	

INTEGRATED CONTINGENCY PLAN

Change Date	Affected Page Number(s)	Description of Change(s)	Name
March 2021	Section 2.0 Page 2-20; Section 7.2 Page 7-2	CER Incident Line telephone number updated	
April 2022	Foreword (Pages ii, xv-xxv); Section 2.0 (Pages 2-6, 2-8 to 2-13, 2-25, 2-29, 2-32 to 2-33, 2-36 to 2-37, 2-47 to 2-48, 2-57); Section 7 Drawings D-3835 and D-3834; Appendix C (Page C-21)	Foreword was revised and updated for administrative title, name and phone number updates; Updated Section 2.0 was revised and updated for administrative title, name, and phone number updates; Drawings D-3835 and D-3834 were updated with latest version, 2022 OSRO certification was added to replace 2021	
March 2024	Foreword (Entire Section); Section 1 (Entire Section); Section 2 (Entire Section); Section 7 (entire Section);	Foreword; Section 1 and Section 2 were revised and updated for administrative title, name and phone number updates; Section 7 was updated to document 2023 SPCC review	
EXAMPLE			
01/01/99	1-1 thru 1-4; 5-2	Head Office Update	B.A. Sample

INTEGRATED CONTINGENCY PLAN

DISTRIBUTION LIST

NOTE: The Distribution of this Plan is controlled by the Copy Number located on the front cover. Plan Distribution Procedures are provided in Section 1.3 and the Plan Review and Update Procedures are provided in Section 1.4 and should be followed when making any and all changes.

COPY NUMBER	PLAN HOLDER (ENTIRE PLAN)	LOCATION
1	President – PPLC / MPLL 30 Hill Street South Portland, ME 04106	South Portland, ME
2	Quebec Area Manager - MPL 10803 Sherbrooke St East. Montreal (Quebec) H1B 1B3	Montreal, QC
3	VOID	
4	Marine Terminal Supervisor -PPL South Portland Marine Terminal 30 Hill Street South Portland, ME 04106	South Portland, ME
5	Maintenance Supervisor – PPL Tank Farm Copy – South Portland Tank Farm 30 Hill Street South Portland, ME 04106	South Portland, ME
6	Station Copy – Raymond Pump Station 388 Meadow Road Raymond, ME	Raymond, ME
7	Station Copy – North Waterford Pump Station 471 Hunts Corner Road North Waterford, ME	North Waterford, ME
8	Station Copy – Shelburne Pump Station 525 State Route 2 Shelburne, NH	Shelburne, NH
9	Station Copy – Lancaster Pump Station 309 Portland Street Lancaster, NH	Lancaster, NH
10	Station Copy – Sutton Pump Station Barton Road (4373 Route 5 – nine miles south of Barton)	Sutton, VT
11	Station Copy – St-Césaire Pump Station 148 rang du Pipeline Saint-Césaire (Quebec)	St-Césaire, QC
12	Station Copy – Highwater Pump Station 99, chemin du Pipeline Highwater (Quebec)	Highwater, QC
13	Maintenance Supervisor- MPL Station Copy – Montreal Terminal 10803 Sherbrooke St East. Montreal (Quebec) H1B 1B3	Montreal, QC

INTEGRATED CONTINGENCY PLAN

COPY NUMBER	PLAN HOLDER (ENTIRE PLAN)	LOCATION
14	Operations Manager- PPL 30 Hill Street South Portland, ME 04106	South Portland, ME
15	Engineering Manager 30 Hill Street South Portland, ME 04106	South Portland, ME
16	Documentation Unit Leader 30 Hill Street South Portland, ME 04106	South Portland, ME
17	Service Branch Unit Leader 30 Hill Street South Portland, ME 04106	South Portland, ME
18	Tank Farm Station Copy 30 Hill Street South Portland, ME 04106	South Portland, ME
19	Environmental Unit Leader 30 Hill Street South Portland, ME 04106	South Portland, ME
20	Controller – Control Center Copy 30 Hill Street South Portland, ME 04106	South Portland, ME
21	Station Copy- Montreal Terminal 10803 Sherbrooke St East. Montreal (Quebec) H1B 1B3	Montréal, QC
22	Station Copy- Montreal Terminal 10803 Sherbrooke St East. Montreal (Quebec) H1B 1B3	Montréal, QC
23	VOID	
24	VOID	
25	EHS Advisor 30 Hill Street South Portland, ME 04106	South Portland, ME
26	Support Branch Unit Leader 30 Hill Street South Portland, ME 04106	South Portland, ME
27	VOID	
28	Administrative Assistant- MPL 10803 Sherbrooke St East. Montreal (Quebec) H1B 1B3	Montréal, QC
29	VOID	
30	MPLL Public Relations Jean-Francois Belleau 11701 Sherbrooke Est Montreal, QC H1B 1C3 Note: Updates sent via cd-rom, no hard copies	Montréal, QC

INTEGRATED CONTINGENCY PLAN

COPY NUMBER	PLAN HOLDER (ENTIRE PLAN)	LOCATION
31	Pierce Atwood - Legal Counsel - US Lisa Gilbreath, Esq Merrill's Wharf 254 Commercial St. Portland, ME 04101 Note: Updates sent via cd-rom, no hard copies	Portland, ME
32	Isabelle Breton Sr Legal Counsel-Canada 11701 Sherbrooke Est Montréal, PQH1B 1C3 Note: Updates sent via cd-rom, no hard copies	Montréal, QC
33	VOID	
34	Clean Harbors of Maine 17 Main Street South Portland, ME 04106	South Portland, ME
35	MSRC - Region 1 Center 120 Fieldcrest Avenue Edison, NJ 08837	Edison, NJ
36	MSRC - Portland 14 Union Wharf Portland, ME 04101	Portland, ME
37	ECRC/ SIMEC-Eastern Canada Response Organization 281 de l'Estuaire Québec (Québec), G1K 8S8	Québec, QC
38	VOID	
39	Santinel Inc 1061, boulevard Ste-Foy Longueuil (Québec) J4K 1W5 Note: Updates sent via cd-rom, no hard copies	Montréal, QC
40	Sécurité GSTS 12225 Roland Paradis #2 Montréal (Québec) H1E 6X7 Note: Updates sent via cd-rom, no hard copies	Montréal, QC
41	U.S. Environmental Protection Agency – Region I 5 Post Office Square, Suite 100 Mail Code: OSRR02-2 Boston, MA 02109-3912 Reference Plan #: FRP01A0001	Boston, MA
42	Commanding Officer Sector Northern New England 259 High Street South Portland, ME 04106	Portland, ME

INTEGRATED CONTINGENCY PLAN

COPY NUMBER	PLAN HOLDER (ENTIRE PLAN)	LOCATION
43, 44	Office of Pipeline Safety (Attn: Response Plan Review) Pipeline & Hazardous Materials Safety Administration U.S. Department of Transportation PHP-5, East Building, 2nd Floor, E22-321 1200 New Jersey Avenue, SE Washington, DC 20590 Contact: David K. Lehman Note: Updates sent via cd-rom/courier, no hard copies	Washington, D.C.
45	Canada Energy Regulator Attention: Secretary of the Commission 517 Tenth Avenue SW Calgary, Alberta T2R 0A8 Note: Updated cd-rom and hard copy sent annually	Calgary, AB
46	VOID	
47	VOID	
48	State of Maine Dept. of Environmental Protection State House Station #17 Augusta, ME 04333	Augusta, ME
49	State of NH Dept. of Environmental Services Attn: Mr. Jason Domke Waste Management Division 29 Hazen Drive- PO Box 95 Concord, NH 03302	Concord, NH
50	State of Vermont, Dept. of Environmental Conservation 103 South Main Street Waterbury, VT 05671-0404	Waterbury, VT
51	VOID	
52	Department of Public Safety Vermont Emergency Management Mr. Jason Gosselin 45 State Drive Waterbury, VT 05671-1300	Waterbury, VT
53, 54	Witt / O'Brien's 818 Town & Country Blvd- Suite 200 Houston, TX 77024-4564 Note: Updates sent via cd-rom, no hard copies	Houston, TX
55	MELCC (French copy of the ICP)	Quebec, QC
56	Environnement and Climate Change Canada 105, McGill Collège, 4 ^e étage Montréal, Quebec H2Y 2E7	Quebec, QC
57	Fire Chief Michael Jodrey Town of Bethel P. O. Box 1660 Bethel, ME 04217 Note: Updates sent via cd-rom, no hard copies	Bethel, ME

INTEGRATED CONTINGENCY PLAN

COPY NUMBER	PLAN HOLDER (ENTIRE PLAN)	LOCATION
58	Fire Chief Brian Cole Town of Casco 635 Meadow Rd Casco, ME 04015 Note: Updates sent via cd-rom, no hard copies	Casco, ME
59	Fire Chief Randall Grondin Town of Gilead 18 Depot St Gilead, ME 04217 Note: Updates sent via cd-rom, no hard copies	Gilead, ME
60	Fire Chief Dana Laplante Town of Harrison 34 School Street Harrison, ME 04040 Note: Updates sent via cd-rom, no hard copies	Harrison, ME
61	Fire Chief Kyle Jordan Town of Otisfield 403 State Route 121 Otisfield, ME 04270 Note: Updates sent via cd-rom, no hard copies	Otisfield, ME
62	Fire Chief Keith Gautreau City of Portland 389 Congress Street Portland, ME 04101 Note: Updates sent via cd-rom, no hard copies	Portland, ME
63	Fire Chief Bruce Tupper Town of Raymond 1443 Roosevelt Trail Raymond, ME 04071 Note: Updates sent via cd-rom, no hard copies	Raymond, ME
64	Fire Chief Philip Selberg City of South Portland 684 Broadway South Portland, ME 04106 Note: Updates sent via cd-rom, no hard copies	South Portland, ME
65	Fire Chief Adrien Morin Waterford Fire Department 366 Valley Road Waterford, ME 04088 Note: Updates sent via cd-rom, no hard copies	Waterford, ME
66	Fire Chief Stephen Sloan City of Westbrook 570 Main St Westbrook, ME 04092 Note: Updates sent via cd-rom, no hard copies	Westbrook, ME

INTEGRATED CONTINGENCY PLAN

COPY NUMBER	PLAN HOLDER (ENTIRE PLAN)	LOCATION
67	Fire Chief Brent Libby Town of Windham 8 School Road Windham, ME 04062 Note: Updates sent via cd-rom, no hard copies	Windham, ME
68	Fire Chief Philip Cloutier Town of Gorham 347 Main St Gorham, NH 03581 Note: Updates sent via cd-rom, no hard copies	Gorham, NH
69	Fire Chief Christopher Milligan Jefferson Fire Department 694 Presidential Highway Jefferson, NH 03583 Note: Updates sent via cd-rom, no hard copies	Jefferson, NH
70	Fire Chief Randy Flynn Town of Lancaster 10 Mechanic St Lancaster, NH 03584 Note: Updates sent via cd-rom, no hard copies	Lancaster, NH
71	Fire Chief Dana Horne Town of Randolph 130 Durand Road Randolph, NH 03593 Note: Updates sent via cd-rom, no hard copies	Randolph, NH
72	Fire Chief Randy Davis Town of Shelburne 74 Village Road Shelburne, NH 03581 Note: Updates sent via cd-rom, no hard copies	Shelburne, NH
73	Fire Chief EJ Rowell Barton Fire Department 1 Memorial Square Orleans, VT 05860 Note: Updates sent via cd-rom, no hard copies	Barton, VT
74	Fire Chief Wayne Greer East Burke Volunteer Fire Brigade P. O. Box 36 East Burke, VT 05832-0036 Note: Updates sent via cd-rom, no hard copies	East Burke, VT
75	Fire Chief Brian Greer Town of Granby 9005 Granby Road P. O. Box 56 Granby, VT 05840 Note: Updates sent via cd-rom, no hard copies	Granby, VT

INTEGRATED CONTINGENCY PLAN

COPY NUMBER	PLAN HOLDER (ENTIRE PLAN)	LOCATION
76	Fire Chief Robin Beaton Town of Irasburg P. O. Box 51 Irasburg, VT 05845 Note: Updates sent via cd-rom, no hard copies	Irasburg, VT
77	Fire Chief Jeff Morse Town of Jay 1036 VT – Route 242 Jay, VT 05859 Note: Updates sent via cd-rom, no hard copies	Jay, VT
78	Fire Chief Rob Shaw Lunenburg Fire Department PO Box 82 Lunenburg, VT 05906 Note: Updates sent via cd-rom, no hard copies	Lunenburg, VT
79	Fire Chief Kevin Lacoss City of Newport 350 Western Ave Newport, VT 05855 Note: Updates sent via cd-rom, no hard copies	Newport, VT
80	Fire Chief Kyle Seymour Sutton Fire Department 167 Underpass Road Sutton, VT 05867 Note: Updates sent via cd-rom, no hard copies	Sutton, VT
81	Fire Chief Robert Jacobs Town of North Troy 142 Main Street North Troy, VT 05859 Note: Updates sent via cd-rom, no hard copies	North Troy, VT
82	Fire Chief Richard Fisher Town of North Concord/Victory PO Box 113 Concord, VT 05824 Note: Updates sent via cd-rom, no hard copies	North Concord, VT
83	Fire Chief Tom Villeneuve West Burke Fire Dept. 42 VT Route 5A West Burke, VT 05871 Note: Updates sent via cd-rom, no hard copies	West Burke, VT
84	Jean Melancon 1700, Boulevard Curé-Poirier Est Longueuil (Quebec), J4J 5L6 Boucherville, Quebec J4B 6X3 Note: Updates sent via cd-rom, no hard copies	Boucherville, Quebec

INTEGRATED CONTINGENCY PLAN

COPY NUMBER	PLAN HOLDER (ENTIRE PLAN)	LOCATION
85	Hugo Brière Bromont Fire Department 15, rue du Ciel Bromont, Quebec J2L 3X4 Note: Updates sent via cd-rom, no hard copies	Bromont, Quebec
86	Gilles Deschamps Cowansville Fire Department 200, rue Miner Cowansville, Quebec J2K 3Y7 Note: Updates sent via cd-rom, no hard copies	Cowansville, Quebec
87	Patrick Cournoyer Dunham Fire Department 3777, rue Principale, C.P. 70 Dunham, Quebec J2K 3Y7 Note: Updates sent via cd-rom, no hard copies	Dunham, Quebec
88	Bruno Jodoin Marieville Fire Department 682, rue Saint-Charles Marieville, Quebec J3M 1P9 Note: Updates sent via cd-rom, no hard copies	Marieville, Quebec
89	Richard Liebmann 040 Avenue du Parc Montreal, Quebec H2W 1S8 Note: Updates sent via cd-rom, no hard copies	Montreal, Quebec
90	James Bouthillier Potton Fire Department 2, rue de Vale Perkins Potton, Quebec JOE 1X0 Note: Updates sent via cd-rom, no hard copies	Potton, Quebec
91	Philippe Chartrand Chef du service des incendies 249, rue Saint-Joseph Ange-Gardien, Quebec JOE 1E0 Note: Updates sent via cd-rom, no hard copies	Ange-Gardien, Quebec
92	Bruno Jodoin 5, chemin du Vide Sainte-Angele-de-Monnoir, Quebec JOL 1P0 Note: Updates sent via cd-rom, no hard copies	Sainte-Angele-de- Monnoir, Quebec
93	Pierre-Damien Arel Saint-Basile Fire Department / Régie intermunicipale de protection incendie de la Vallée-du-Richelieu 990, Rue Dupré Beloeil (Quebec) J3G 4A8 Note: Updates sent via cd-rom, no hard copies	Saint-Basile-le- Grand, Quebec

INTEGRATED CONTINGENCY PLAN

COPY NUMBER	PLAN HOLDER (ENTIRE PLAN)	LOCATION
94	Etienne Chassé St-Césaire Fire Department 1111, avenue Saint-Paul Saint-Cesaire, Quebec J0L 1T0 Note: Updates sent via cd-rom, no hard copies	Saint-Cesaire, Quebec
95	Marc Tremblay Sainte-Julie Fire Department 395, Rue Bernadette Sainte-Julie, Quebec J3E 1W6 Note: Updates sent via cd-rom, no hard copies	Sainte-Julie, Quebec
96	Sébastien Halde St-Mathias Fire Department 300, chemin des Patriotes Saint-Mathias-sur-Richelieu, Quebec J3L 6Z5 Note: Updates sent via cd-rom, no hard copies	Saint-Mathias-sur- Richelieu, Quebec
97	Don Mireault Sutton Fire Department 15, rue Principale Sud Sutton, Quebec J0E 2K0 Note: Updates sent via cd-rom, no hard copies	Sutton, Quebec
98	Portland Water District Attn; Chad Thompson 1 White Rock Road Standish, ME 04084 Note: Updates sent via cd-rom, no hard copies	Standish, ME

1.0 INTRODUCTION AND PLAN CONTENT

1.1 PLAN PURPOSE/OBJECTIVES

The purpose of this Integrated Contingency Plan (hereinafter referred to as "Plan") is to assist Portland Pipe Line Corporation (PPL) and Montréal Pipe Line Limited (MPL), (hereinafter referred to together as "PMPL" or "Company") personnel to prepare to minimize impacts to human health and the environment, and respond safely and efficiently to a discharge of oil, hazardous material or hazardous waste, fire, explosion or medical emergency originating from the pipelines, terminals or associated facilities (hereinafter referred to as "Facility or Facilities"). The Plan provides techniques and guidelines for achieving a safe, efficient, coordinated, and effective response to an incident which may occur at the Facility.

The specific objectives of the Plan are to:

- Establish Response Teams, assign individuals to fill the positions on the teams, and define the roles and responsibilities of team members.
- Define notification, activation, and mobilization procedures to be followed when an incident or discharge occurs.
- Define organizational lines of responsibility to be adhered to during a response operation.
- Document equipment, personnel, and other resources available to assist with the response.
- Ensure compliance with the Company's Corporate Safety and Environmental Policies.
- Ensure compliance with the federal, provincial, state, and local oil pollution and hazardous waste regulations.
- Ensure consistency with the US National Contingency Plan, US Area Contingency Plan(s), Canada Federal Emergency Plan or the Quebec Plan national de sécurité civile for the respective area of operation.

1.2 SCOPE OF PLAN

This Plan has been developed under the general guidance published in the Federal Register by the EPA entitled "The National Response Team's (NRT) Integrated Contingency Plan" (61FR28642). The NRT guidance was developed in conjunction with the Environmental Protection Agency, Department of Transportation (U.S. Coast Guard, Pipeline and Hazardous Material Safety Administration), Department of the Interior (Minerals Management Service), and the Department of Labor (Occupation Safety and Health Administration).

This Plan has also been developed under general guidance provided by environmental and technical agencies in Canada. More specifically, the following guidelines/resources were used:

- o Environmental Emergencies Branch Environment Canada's Interim Implementation Guideline for Canadian Environmental Protection Act, 1999 Part 8, Environmental Matters Related to Emergencies Section 199, Authorities for Requiring Environmental Emergency Plans. March 2000
- o CAN/CSA-Z731-03 Emergency Planning for Industry.

In Canada, the emergency response interventions will be done in cooperation with the concerned Government organizations as per the «Loi sur la sécurité civile du Québec» of the government of Québec (Bill No 173) and in accordance with articles 32, 33, 34 and 35 of the OPR of the Canada Energy Regulator. On a regular basis, MPL will verify that emergency response plan requirements originating from these Government organizations are in harmony with the PMPL plan.

The plan is organized into Contingency Planning Sections, Facility Specific Information, Oil Spill Specific Plan information and Appendices.

This guidance also provides for federal, state, provincial and local contingency planning requirements to be incorporated into the Plan. A summary of the applicable regulations and the facilities affected by each regulation is provided in Section 1.5.

The plan provides guidance for responding to and managing hazardous materials and hazardous waste emergencies at PMPL facilities.

For complete Cross-Reference for Laws, Regulations, and Guidelines concerning pipelines, consult Appendix A.

Plan Integration

The SPCC Plan for U.S. Operations is integrated into the Facility's Integrated Contingency Plan (ICP) into Section 7 tabbed "PPL / MPL Specific plans". The integrated documents have been streamlined to maximize their usefulness in the event of an emergency response, as well as for training and regulatory compliance.

Specific references are made in the SPCC Plan to certain sections, figures, and appendices of the ICP for data that provides a primarily response oriented function (Facility diagrams, summary Facility information, notification data, etc.) or to consolidate certain supporting appendices (regulatory cross-references, documentation forms, glossary/acronyms, etc.). Specific references are made out of the ICP into certain sections and figures of the SPCC Plan for data that provides primarily spill prevention, control and countermeasures information (discharge detection methods, containment and drainage detail, hazard identification tank tables, security, etc.).

This Plan contains prioritized procedures for Facility personnel to mitigate or prevent any discharge resulting from Facility operations. A description of the operations conducted at the Facility has been detailed in Figures 1.4 and 1.7 with additional information provided in the Facility-specific sections and the appendices. It is also the intention of this plan to cover emergencies that may occur in the immediate vicinity of PMPL's right-of-way (ROW) and associated facilities from South Portland, Maine to Montreal, Quebec. Facility spill mitigation procedures and response guidelines are provided in Section 3.0 for discharges that could result from any of the following scenarios:

- Pipeline rupture/leak
- Tank overfill/failure
- Explosion and/or fire
- Failure of facility piping
- Equipment failure (e.g. pumping system failure, relief valve failure, etc.)
- Leak or discharge of hazardous material from drum or container

These scenarios could result in the following discharge volumes:

Discharge Scenario	Potential Oil Group	Planning Volumes (Bbls)			
		USCG	EPA	DOT-RSPA	CANADA
Small/Average Most Probable	2 (Crude Oil)	50	50	N/A	50
Medium/Maximum Most Probable	2 (Crude Oil)	1,200	857	N/A	857
(b) (7)(F)	[REDACTED]	[REDACTED]	[REDACTED]	[REDACTED]	[REDACTED]

These worst case discharge volumes are utilized in calculating the planning volume for response resources. The planning volume is used to determine the necessary on-water recovery capacity to respond within the three tiered response times. The identified oil spill recovery devices should be capable of arriving at the scene of a discharge within the time specified for the applicable response tier. The pipeline system is considered to be in a non-high volume area described in 40 CFR 112, 49 CFR 149, and 33 CFR 154. Therefore, the tier requirements for these areas are for response in 12 hours (Tier 1), 36 hours (Tier 2), and 60 hours (Tier 3). Appendix G of this Plan demonstrates a series of calculations and planning volume determinations based on guidance provided by the U. S. Environmental Protection Agency (EPA) in 40 CFR Part 112 *Final Rule* dated July 1, 1994, the U.S. Coast Guard (USCG) regulations in 33 CFR Part 154, Subpart F 61 FR 7917, February 29, 1996, effective date May 29, 1996, and the Department of Transportation (DOT) PHMSA regulations in 49 CFR 194.105 dated January 5, 1993. Appendix G demonstrates a series of calculations for worst case discharge scenarios involving the pipeline and the North Tank Field. The inclusion of these calculations is for demonstration of the response planning volumes and response capability necessary for on-water and on-shore recovery requirements as the result of the discharge scenarios outlined in the table above.

1.3 PLAN DISTRIBUTION PROCEDURES

The Plan Administrator shall have the responsibility for maintenance and distribution of the Plan. Distribution will be handled in the following manner:

- Distribution of the Plan is controlled by the number on the cover page. A

distribution list is included in the Distribution and Revisions Section to facilitate control.

- Company personnel who may be called upon to provide assistance during discharge response activities will have access to a copy of the plan for their use and training.
- It is the responsibility of any person holding a copy of the Plan to ensure that the copy is transferred to their replacement in the event of reassignment or change in responsibility.
- Various regulatory agencies will also be distributed a copy of the Plan. The list of agencies is detailed in the Distribution List located in the Foreword Section.

1.4 PLAN REVIEW AND UPDATE PROCEDURES

Annual Review/Update

The Plan Administrator will coordinate the following plan review and update procedures:

- At least once each year, review and make appropriate revisions as required by operational or organizational changes.
- At least once each year, review and make appropriate revisions as required by changes in the names and telephone numbers detailed in Section 2.0.
- At least once each year, review and make appropriate revisions if the list of emergency equipment changes.
- Coordinate the word processing, publication, and distribution efforts to complete the revisions and maintain the Plan.
- Plan review opportunities may occur during response team tabletop exercises or actual emergency responses. Upon the completion of all drills, exercise and actual response the plan administrator will hold a lessons learned meeting to properly identify any revisions that may be necessary to the ICP. The lessons learned will be stewarded to completion through the PMPL gap closure process.
- The Quebec Area Manager will ensure liaisons with the Canadian agencies are maintained.
- The Operations Manager will ensure liaisons with the U.S. agencies are maintained.
- Updates will incorporate feedback identified during the field liaisons with agencies and municipalities as part of the Public Awareness Program or Response Exercises.

Incorporation of Plan Revisions

The **plan holder**, immediately upon receipt of any revisions, shall:

- Review and insert the revised pages into the Plan.
- Discard the obsolete pages.
- Record this action on the "Revision Record" page in the Distribution and Revisions Section.

1.4.1 U. S. Agency Revision Requirements

The Facility shall revise and resubmit revised portions of the Plan for each facility change that may materially affect the response to a Worst Case Discharge including:

CONDITIONS REQUIRING CHANGES	EPA	DOT/ PHMSA	USCG
Change in ownership of Facility and/or Pipeline.	✓	✓	
Relocation or replacement of portions of the Facility (including the pipeline) which in any way substantially affect the information included in this Plan, such as a change in the Worst Case Discharge volume.	✓	✓	✓
Emergency response procedures.		✓	✓
A change in the Qualified Individual.	✓	✓	
A change in the NCP or an ACP that has significant impact on the equipment appropriate for response activities.		✓	
A change in the listings of economically important or environmentally sensitive areas identified in the applicable ACP in effect six (6) months prior to the plan review.	✓	✓	✓
Change in the Facility's configuration that materially alters the information included in the Plan (i.e. new construction).	✓	✓	✓
Change in the type of oil handled, stored, or transferred that materially alters the required response resources.	✓	✓	✓
A change in the name of the Oil Spill Removal Organization (OSRO).		✓	✓
Material change in capabilities of the Oil Spill Removal Organization(s) (OSROs) that provide equipment and personnel.	✓	✓	✓
Material change in the Facility's spill prevention and response procedures.	✓	✓	
Any other changes that materially affect the implementation of the Plan.	✓	✓	✓
As a result of post incident or drill evaluations.		✓	

NOTE: Any agency may require revisions to this Plan at any time if deficiencies are found under their applicable regulations or during an actual response.

Except as provided above, amendments to the following do not require approval by DOT/PHMSA, EPA, or USCG.

- Personnel and telephone number lists included in the Plan.

SUBMISSION OF REVISIONS

When submitting revisions to the applicable agencies always include the Facility identification number (see Figure 1.4) with the revisions. The agencies require revisions to be submitted as follows:

- **EPA** – The Facility shall revise and resubmit revised portions of the Plan to the EPA Regional Administrator within 60 days of each facility change that may materially affect the response to a Worst Case Discharge.
- **DOT/PHMSA** – The Facility shall revise and resubmit changes to the Pipeline Response Plans Officer within 30 days. An updated plan shall be submitted to the Response Plans Officer every five years.
- **USCG** – Requires changes to be submitted in a timely manner to the Sector (in duplicate). The plan review must occur within one (1) month of the anniversary date of the USCG approval letter. If NO CHANGES are required, the Facility must submit a letter to the USCG stating “NO CHANGES REQUIRED”.

1.4.2 Canadian Agency Revision Requirements

- **CER**– The Facility shall file both one hard copy and one electronic copy of their respective Emergency Procedures Manual. When filing updates MPLL shall file a new, complete EPM in both electronic and hard copy incorporating all updates. MPLL shall, at a minimum, file annual EPM updates by April 1 or alternatively, file a letter indicating that there have been no changes to the EPM.

The Facility shall review and resubmit revised portions of the Plan for each facility change that may materially affect the response to a Worst Case Discharge. A copy of the revised version will be transmitted to the Canada Energy Regulator.

All updates will be communicated to employees or external resources having a copy of the Plan (see Section, Plan Distribution Procedures).

Hereafter is a list of sections which require a regular update.

- **Section 1: Introduction and General Information**
 - Regulatory Compliance and Interface with Other Plans
 - PMPL System Information and General Description
 - Hazard Evaluation
- **Section 2: Notification Procedures**
 - Alarm Systems
 - Internal and External Notifications
 - Telephone Lists of Internal and External Resources
 - Initial Communication Plan
- **Section 4: Response Team**
 - Qualified Individual
 - Response Team Training

- **Appendices:**

- Appendix A: Regulatory Cross Reference
- Appendix C: Response Equipment and Resources; Agreements
- Appendix F: Disposal Plan
- Appendix G: Worst Case Discharge Scenarios
- Appendix H: Hazard Evaluation / Hazardous Materials Inventory

1.5 REGULATORY COMPLIANCE

The development, maintenance, and utilization of this Plan implements company policy and addresses the following regulatory requirements and guidelines (for complete description of articles and Cross-References, see Appendix M):

- Federal Oil Pollution Act of 1990: U.S. DOT Final Rule for Transportation Related On-shore Facilities (49 CFR Part 194), U.S. EPA Final Rule for Non-transportation Related Onshore Facilities (40 CFR Part 112 – as published on July 1, 1994 and USCG Final Rule for Transportation Related On-shore Facilities (33 CFR 154 as published 1996).
- U.S. EPA Spill Prevention, Control, and Countermeasure (SPCC) regulations (40 CFR Part 112.5).
- U.S. EPA Hazardous Waste Regulations (40 CFR Part 264) and State of Maine Hazardous Waste Rules Chapter 850-857
- Onshore Pipeline Regulations (SOR 99/294)
 - The OPR requires that companies include in their emergency response plan all emergencies resulting from all causes and have applicable procedures in place to deal with all potential scenarios.
- Oil and Gas Occupational Safety and Health Regulations (SOR 87-612)
- Canadian Standards Association pipeline standards
- Guidelines for Filing Requirements of the Canada Energy Regulator
- CAN/CSA-731-03 Emergency Planning for the Industry – A National Standard of Canada
- Planning of the emergency measures to ensure the safety of the workers: Guidance document for the development of emergency measures plan for the Industry, CSST
- OSHA's Emergency Action Plan Regulation (29 CFR 1910.386(a))
- OSHA's HAZWOPER Regulation (29 CFR 1910.120)

The applicable Area Contingency Plans for the Facility are:

- U.S. Environmental Protection Agency Inland Contingency Plan – Region I, New England (Sept. 07, 2006 and changes)- Current March 2008
- U.S. Coast Guard: Maine and New Hampshire Area Contingency Plan – Portland, Maine (Change dated May, 2008)- Current December 2015

The applicable National Contingency Plan for the Facility is:

- U.S. Environmental Protection Agency; National Oil and Hazardous Substances Pollution Contingency Plan; Final Rule; published September 15, 1994.

1.6 DISCHARGE/EMERGENCY CLASSIFICATION

The Company's response to a hazardous material release, fire, medical emergency, or natural disaster will depend on the facts, circumstances, potential hazards and substances involved in each incident. All incidents will be evaluated and characterized according to the following criteria:

**Figure 1.1
Incident Classification Criteria - Consequence**

CATEGORIES	MAJOR	SERIOUS	MINOR
Spill / Contamination- Mainline / Pier	>50K\$	Spill to land and water > 1 bbl.	>0
Spill / Contamination - Mainline Stations / Tank Farm/Terminals	>50K\$	Spill to land and water > 1 bbl	> 1 gal.
Personnel	Death or Disability	Lost Time Restricted Work Medical Aid	First Aid
Facility: Fire & Explosion Material, Product Loss, Property Damage,	>100K\$	25 – 100K\$	<25K\$
(b) (7)(F)	[REDACTED]	[REDACTED]	[REDACTED]

Non-emergency Incident - A non-emergency incident is an occurrence that does not pose an immediate safety, security, health or environmental hazard. Non-emergency incidents are routine occurrences which can be handled safely by operational employees in the immediate work area or maintenance personnel from other areas of the facility.

If an incident occurs and it cannot conclusively be characterized as a non-emergency, it is characterized as an emergency, and the emergency response procedures described in this plan are implemented. If the Company's subsequent evaluation of the situation shows that an emergency does not exist, the incident will be re-characterized accordingly.

Characterizing Emergency Incident Levels

During any “emergency incident,” it is the responsibility of the Spill Management Team to immediately determine the incident level and communicate this determination to personnel responsible for informing all other emergency response personnel. The initial determination directs initial response actions.

The following factors shall be considered when evaluating and classifying an emergency incident level:

- The type of incident (crude oil spill, release of hazardous material or hazardous waste, fire, explosion, medical, security).
- Location of the incident.
- The hazardous material involved and the hazards potentially associated with the material.
- Size, duration, and characteristics of the incident, when available.
- Potential hazards to facility personnel, public, and the environment.
- Corrective actions needed to control the incident, when available.
- Potential for involvement of other facility areas and the possibility of secondary incidents.
- Any mitigating or aggravating factors (e.g., weather conditions, proximity of incompatible material, loss of power).
- It involves a response effort by emergency responders from outside the immediate area and/or by other designated outside responders (e.g., local, state and provincial response agencies, fire departments, and hazardous materials teams) 29 CFR § 1910.120(a) (3).

The severity of a discharge will have a bearing on the level of management involvement necessary and the extent of resource mobilization.

Emergency Incidents are further classified into the levels in Figure 1.2.

All levels require an Emergency Reporting Checklist to be filled by the Pipeline Controller. Every emergency will require a follow-up investigation as well as corrective measures to be implemented in order to prevent further incidents from occurring. Incident investigations will be conducted by the individual identified in PMPL incident investigation procedures.

Montreal Pipe Line Only:

Definition of Emergency and Non-Emergency Incidents

- Emergency Incident (from OPR) – An emergency incident is an occurrence which will involve incidents and releases that are defined and reportable to the CER under section 1.0 of the OPR. These are:
 - the death of or serious injury to a person;
 - a significant adverse effect on the environment;
 - an unintended fire or explosion;
 - an unintended or uncontained release of LVP hydrocarbons in excess of 1.5 m³;
 - an unintended or uncontrolled release of gas or HVP hydrocarbons;

- the operation of a pipeline beyond its design limits as determined under CSA Z662 or CSA Z276 or any operating limits imposed by the Canada Energy Regulator.

MPLL shall call the TSB line to report significant incidents on CER regulated pipelines and facilities, report all events in the CER's Online Event Reporting System (OERS) (<https://apps.cer-rec.gc.ca/ers>) and the kinds of events to report. Examples include:

A significant incident is an acute event that results in:

- death;
- missing person (as reportable pursuant to the *Canada Oil and Gas Drilling and Production Regulations (DPR)* under the *Canada Oil and Gas Operations Act (COGOA)* or the *Oil and Gas Operations Act (OGO A)*);
- a serious injury (as defined in the OPR or TSB regulations);
- a fire or explosion that causes a pipeline or facility to be inoperative;
- a LVP hydrocarbon release in excess of 1.5 m³ that leaves company property or right of way;
- a significant adverse effect on the environment;
- a rupture; or
- a toxic plume as defined in CSA Z662

Note: A "rupture" is an instantaneous release that immediately impairs the operation of the pipeline segment such that the pressure of the segment cannot be maintained.

Where an event qualifies as a significant incident and must be reported immediately, MPLL shall notify the TSB Reporting Hotline at 819-997-7887. Subsequently, MPLL shall input the details required by both the TSB and the CER for each significant incident in the CER's OERS.

For all other events that must be reported immediately, MPLL shall report within twenty-four hours of occurrence or discovery to the online reporting system.

The events that are reportable using the online reporting system are:

- incidents under the OPR, PPR, and DPR/*Oil and Gas Drilling Regulations*;
- Contraventions under the *CER Pipeline Damage Prevention Regulations*;
- emergency burning or flaring under the PPR;
- hazard identification under the PPR;
- suspension of operations under the PPR;
- Damage to Pipe under the DPR;
- serious accidents or incidents under the *Canada Oil and Gas Geophysical Operations Regulations/Oil and Gas Geophysical Operations Regulations*;
- emergencies or accidents under the *Canada Oil and Gas Installation Regulations/Oil and Gas Installation Regulations*; and
- accidents, illnesses, and incidents under the *Canada Oil and Gas Diving Regulations/Oil and Gas Diving Regulations*.

In the event that OERS is unavailable, MPLL shall report events to the TSB Reporting Hotline at 819-997-7887.

The CER and TSB have adopted a single window reporting approach. However, in some areas, the TSB reporting requirements are somewhat different than the CER requirements. MPLL shall refer to the TSB website (www.tsb.gc.ca/eng/incidents-occurrence/index.asp).

Transportation Safety Board of Canada

Place du centre, 4th floor

200 Promenade du Portage

Hull, Québec K1A 1K8

Facsimile 819-953-7876

**Figure 1.2
Incident Classification Criteria - Management level required**

MINOR INCIDENT

Incident Command will normally be assumed by Local Management. Corporate support will be utilized on an as needed basis.

Exposure

The potential Public and Environmental exposure is moderate. The type and quantity of material released, while considering the overall nature of the incident (e.g. fire, proximity to private dwellings, etc.), will have moderate impact on the public and/or the environment.

Degree of Control

The incident can be controlled in a short period of time through implementation of the local resources available to the Facility (including contract resources).

Governmental Involvement

Government involvement will be moderate and generally restricted to State, Provincial, and Local levels.

Media Involvement

Media interest will be moderate and generally restricted to State, Provincial and Local levels.

SERIOUS INCIDENT

Local resources may have to be supplemented with Corporate and external resources to manage the spill incident.

Exposure

The potential Public and Environmental exposure is moderately high. The type and quantity of material released, while considering the overall nature of the incident (e.g. fire, proximity to private dwellings, etc.), will have moderately high impact on the public and/or the environment.

Degree of Control

The incident can be brought under control in a moderate period of time through implementation of local resources available to the Company (including contract resources) with possible implementation of regional resources.

Governmental Involvement

Government involvement will be moderately high and generally restricted to Regional levels.

Media Involvement

Media interest will be moderately high and generally restricted to Regional levels.

Figure 1.2 (Cont'd)
Incident Classification Criteria- Management Level Required

MAJOR INCIDENT

Maximum and external resources must be implemented to respond to the spill incident. Activation of the Spill Management Team would be anticipated during a Major incident.

Exposure

The potential Public and Environmental exposure is significant. The type and quantity of material released, while considering the overall nature of the incident (e.g. fire, proximity to private dwellings, etc.), will have significant impact on the public and/or the environment.

Degree of Control

Maximum and third party resources must be implemented in order to gain control of the incident.

Governmental Involvement

Government involvement will be intense.

Media Involvement

Media interest will be intense.

MPLL uses the CAN/CSA Z731-03 to determine the criteria of an emergency or incident.

LEVEL I:

- No effects outside company property
- Control of hazardous substance completed or pending
- No immediate threat to the public or company personnel
- Minimal environmental effects
- Incident/spill handled by company personnel
- Low potential to escalate

LEVEL II:

- No immediate threat outside company property but potential exists to extend beyond property boundaries
- Outside services and government agencies likely to be directly involved
- Imminent control of hazardous substance probably
- Some injury or threat to the public and company personnel
- Moderate environmental effects

LEVEL III:

- Serious injury to the public and company personnel and ongoing threat to the public
- Uncontrolled release of hazardous substance continuing
- Significant and ongoing environmental effects
- Immediate and significant government agency involvement
- Assistance from outside parties required
- Effects extend beyond company property

FIGURE 1.3

PIPELINE SYSTEM OVERVIEW MAP

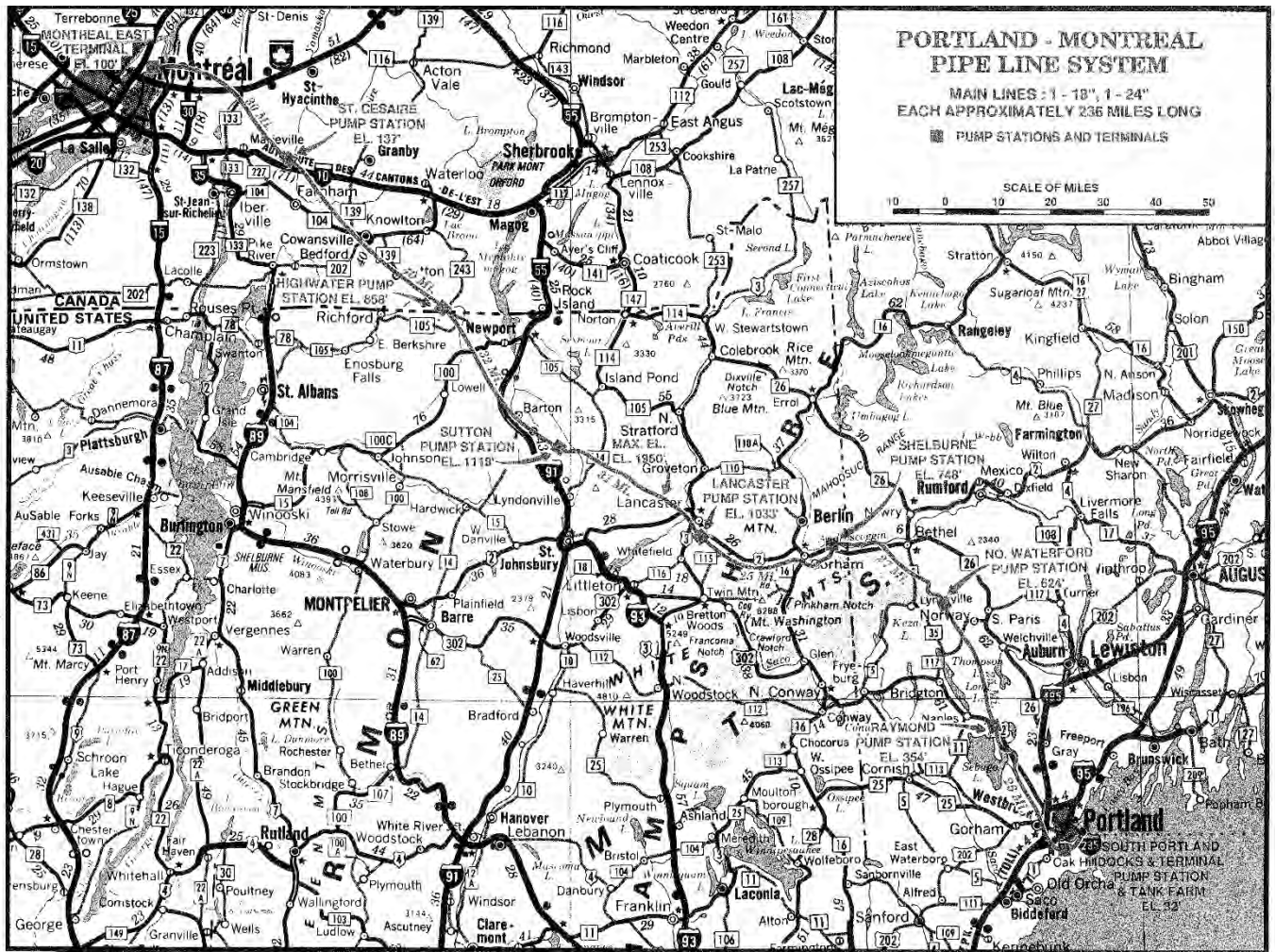


FIGURE 1.4

PMPL SYSTEM INFORMATION

SYSTEM GENERAL INFORMATION

System Name: Portland Montreal Pipe Line System

System Description: The Portland Montreal Pipe Line system enables shipment of crude oil between South Portland (Maine) and Montreal-East (Québec). Two (2) companies, under one ownership, are engaged in this operation.

- Portland Pipe Line Corporation - US
ADDRESS: 30 Hill Street
South Portland, ME 04106

TELEPHONE: 207-767-0421
207-767-3231 (Emergency - 24 hour)
866-253-7351 (Emergency - 24 hour)

FAX: 207-767-0442

- Montreal Pipe Line Limited - Canada
LEGAL NAME : Montreal Pipe Line Limited

ADDRESS: 10803, Sherbrooke St. East
Montreal (Quebec) H1B 1B3

TELEPHONE: 514-645-8797
514-645-4589 (Emergency- 24 hour)
888-977-4589 (Emergency -24 hour)

FAX: 514-645-7663

(As stated in Section 1.1, these two companies are collectively referred to as "PMPL" or The Company" throughout this plan).

Qualified Individual: (b) (6)

Alternate Qualified Individuals: (b) (6)

PHMSA Sequence Number: 0045 - Region 1

Owner Name: Portland Pipe Line Corporation
(b) (6)
30 Hill Street
South Portland, ME 04106

SYSTEM GENERAL INFORMATION

Facilities Included in in Pipeline System:

- A terminal to transfer from or to tanker ships with storage facilities South Portland.
- Three (3) large-diameter dock lines 24" (610 mm), 30" (762 mm) and 42" (1,067 mm) in South Portland linking the terminal to the tank field. (b) (7)(F)
- Two (2) main pipe lines between South Portland and Montreal-East: the first constructed in 1950 and having a diameter of 18" (457 mm), the second, constructed in 1965 and having a diameter of 24" (610 mm). A third line constructed in 1941 and having a diameter of 12" (305 mm) has been abandoned in place.
- Eight (8) pumping stations with an installed capacity of 47,789 kW located along the pipeline route.
- A terminal with a storage tank field in Montreal-East, including manifolds and delivery lines connected to the customers of Montreal Pipe Line Limited.
- Portland Pipe Line Corporation, a Maine corporation, is owned by Suncor Energy, Inc. Portland Pipe Line Corporation owns the section of the pipeline system in U.S. territory and is a common carrier under the jurisdiction of the Federal Energy Regulations Commission, which administers U.S. laws and regulations relevant to the economics of oil transportation. The Office of Pipeline Safety, Pipeline and Hazardous Materials Safety Administration has jurisdiction for the other aspects of oil pipeline transportation. Crude oil coming from international sources and transferred in South Portland is moved in transit under U.S. Customs Bond through the U.S.
- Montreal Pipe Line Limited, a Canadian Corporation, is owned by Suncor Energy, Inc. Montreal Pipe Line Limited is a common carrier falling under the jurisdiction of the Canada Energy Regulator, which administers Canadian Laws and Regulations relevant to pipeline operations in the Canadian section of the pipeline system.

SYSTEM GENERAL INFORMATION

**Response Zone
(DOT/PHMSA):**

Portland Pipe Line Corporation is treating the entire pipeline as one zone. States and counties affected include:

- Maine - Cumberland County; Oxford County
- New Hampshire - Coos County
- Vermont - Caledonia County; Essex County; Orleans County

Primary NAICS Codes:

48611

**Determination of Significant
and Substantial Harm
(DOT/PHMSA):**

This Response Zone meets the criteria for "Significant and Substantial Harm".

**Operator Statement of
"Significant and
Substantial Harm":**

Portland Pipe Line Corporation has determined that an accidental release could cause significant and substantial harm to the environment because of the following conditions outlined in 194.103 of the regulations:

- Some sections of the pipeline are operated at pressure levels above fifty percent of the specified minimum yield strength of the pipe.
- Some sections of the pipeline are located within a five mile radius of public drinking water intakes.

Portland Pipe Line Corporation has determined that an accidental release meets the criteria for substantial harm because of the following conditions outlined in 112.20 of the regulations:

- The facility transfers oil over water from vessels and has a total oil storage capacity greater than 42,000 gallons.
- The facility has a total oil storage capacity greater than 1 million gallons and is located at a distance such that a discharge from the facility could cause injury to fish and wildlife and sensitive environments.

FIGURE 1.7

FACILITY GENERAL INFORMATION	
South Portland Marine Terminal and Tank Farm	
Facility Name:	Portland Pipe Line Corporation - South Portland Marine Terminal and Tank Farm
Facility Address and Telephone Number:	Marine Terminal Pier No. 1 10 Portland St South Portland, Maine 04106 Cumberland County
	Marine Terminal Pier No. 2 1 Cushing Court South Portland, Maine 04106 Cumberland County
	Dock House: (207) 767-0468 Guard House: (207) 767-0470 Supervisor's Office: (207) 767-0473
	Tank Farm and Pump Station 30 Hill Street South Portland, Maine 04106 Cumberland County
	Operations Control Center Emergency No: (207) 767-3231 1-866-253-7351
Owner/Operator Name:	Portland Pipe Line Corporation 30 Hill Street South Portland, Maine 04106
Qualified Individual/ Emergency Coordinator	(b) (6)
Alternate Qualified Individuals	(b) (6)
	(b) (6)
Date of Initial Oil Storage:	November 4, 1941

FIGURE 1.7 (cont'd)

FACILITY GENERAL INFORMATION	
South Portland Marine Terminal and Tank Farm (Cont'd)	
County:	(b) (7)(F)
Latitude/Longitude:	(b) (7)(F)
Area Map:	(b) (7)(F)
Facility Diagram:	(b) (7)(F)
Wellhead Protection Area:	No Impact
Landside Directions:	<ul style="list-style-type: none">The tank farm and pump station is located on Hill and Dunscomb Streets in South Portland.
Waterside Directions:	<ul style="list-style-type: none">Pier No. 1 is located in the Fore River on the North Shore of South Portland near Front Street.Pier No. 2 is located in Casco Bay west of Diamond Island Roads, and the northwesterly shore of South Portland. The pier is approximately 12.5 nautical miles northwest of the Portland Large Navigation Buoy.
FACILITY PHYSICAL DESCRIPTION - GENERAL	
South Portland Marine Terminal and Tank Farm	
Description Of Operation:	<ul style="list-style-type: none">The Facility stores crude oil.Crude oil is transferred at the dock via tankers. It is primarily transferred via dock lines into tankage and from there transported by the 24" (610 mm) pipeline to Montreal-East.The Facility is not equipped with a truck rack.(b) (7)(F)The facility generates and temporarily stores hazardous waste.
Note: Safety Data Sheets (SDS) are in Section 3.0 and are also maintained separately at the Facility.	

FIGURE 1.8

**FACILITY PHYSICAL DESCRIPTION – MARINE
South Portland Marine Terminal**

Description of Operation:

- The marine terminal consists of two piers and four storage tanks (i.e. two in the vicinity of each pier).
- Ocean-going tankers unload crude oil at one of the marine terminal's two finger piers. Details on both piers follow.

Pier No. 1 (Currently idle)

- Pier Length is 657 feet.
- Two berths (east and west) dredged to 35 feet.
- Each berth is approximately 645 feet long.
- Two hose (in storage) strings at each berth, 10 inches by 60 feet.
- Two unloading lines – one 16" line and one 24" line.
- A maximum of two (2) simultaneous pumping operations.

Physical Limitations:

Maximum Summer Deadweight Tonnage	32,000 DWT
Maximum Length Overall	675 ft.
Maximum Arrival Draft	

- East Berth 32 ft.
- West Berth 31 ft.

Maximum Beam	91 ft.
--------------	--------

Maximum Distance, Bow To Hose Connections: Vessels Not Having Bulbous Forefoot	364 ft.
---	---------

Maximum Distance, Bow To Hose Connections: Vessels Having Bulbous Forefoot	354 ft.
---	---------

Maximum Distance, Stern To Hose Connections	360 ft.
---	---------

Pipelines from Dock to Facility:

- One (1) 24" diameter pipeline that runs 2,327 feet from the dock to the first valve within secondary containment.
- One (1) 30" diameter pipeline that runs 1,140 feet from the dock to the first valve within secondary containment.
- (b) (7)(F)

(Volume calculation details are provided in Appendix G – Worst Case Discharge Analysis and Appendix H – Hazard Evaluation)

FIGURE 1.8 (cont'd)

Pier No. 2

- Two berths with depths of 57 feet below mean low water.
A maximum of two (2) simultaneous pumping operations.
Two 36" dock lines.

Physical Limitations:

Maximum Summer Deadweight Tonnage	Approx. 170,000 DWT
Maximum Length Overall	960 ft.
Maximum Distance, Bow To Center Of Vessel's Manifold (B to CM). Vessels Having Bulbous Forefoot	480 ft.
Maximum Distance Stern to Center Vessel's Manifold	480 ft.
Maximum Arrival Displacement	200,000 LT
Maximum Arrival Draft	50 ft.
Maximum Allowable Discharge Pressure At Ship's Rail	100 psig

Pipelines from Dock to Facility:

- One (1) 36"/30" diameter pipeline that runs 17,200 feet from the dock to the first valve within secondary containment.
- One (1) 36"/42" diameter pipeline that runs 15,900 feet from the dock to the first valve within secondary containment.
- (b) (7)(F)

(Volume calculation details are provided in Appendix G- Worst Case Discharge Analysis and Appendix H- Hazard Evaluation)

FIGURE 1.9

FACILITY PHYSICAL DESCRIPTION - PIPELINE

PMPL Mainline Pipeline

General: A diagram of the main line profile is included in Appendix I. The location and access route to the main line pump stations follows. The location and valve locations are also presented in Appendix I.

Crude oil is tendered for transportation by the shipper to South Portland, Maine to be transferred to the Portland Pipe Line Corporation Terminal. The Portland Pipe Line Corporation Pumping Station in South Portland begins the movement of the crude oil towards Montreal. The oil is first transferred from the storage tanks of the Portland Pipe Line Corporation in South Portland into the 610 mm / 24 inch diameter line.

If needed and apart from the Portland station, various pumping stations in Raymond and North Waterford (Maine), Shelburne and Lancaster (New Hampshire), Sutton (Vermont), Highwater and Saint-Césaire (Quebec), can all be used to boost the crude oil flow to the Montreal-East Terminal. From Montreal-East Terminal, the product is shipped by pipelines:

- ◆ To an on-site relief tank at the Montreal Terminal;
- ◆ Directly to the nearby reception tanks of Suncor Energy refinery.

At the Montreal-East Terminal, the flow rate ranges between (b) (7)(F) , with a typical average line pressure of 0.7 kg/cm² (10 PSI) to 6.3 kg/cm² (90 PSI).

(b) (7)(F)

(b) (7)(F) (b) (7)(F)

Pipeline System Details:

The basic specifications of the entire pipeline system is as follows:

- **Product Types:** Crude Oil
- **Pipe Detail:** Two main lines of 18" (457 mm) and 24" (610 mm)

Note: 18" (457mm) deactivated and displaced with nitrogen in 2011

Normal Operating Conditions:

(b) (7)(F) (b) (7)(F)

(b) (7)(F) (b) (7)(F)

(b) (7)(F) (b) (7)(F)

(b) (7)(F) (b) (7)(F)

FIGURE 1.10 (cont'd)

**FACILITY PHYSICAL DESCRIPTION
Raymond Pump Station**

TELEPHONE NUMBER: 207- 655- 4567

338 Meadow Road
Raymond, Maine, 04071

Access Directions to the Station from Portland, ME

- ◆ Take Rte 302 West from Portland,
- ◆ At the rotary intersection, take the second exit and continue North on rte 302 for 7.7 miles,
- ◆ Turn SLIGHT RIGHT onto MAIN ST / ME-Rte 121 for 0.5 miles,
- ◆ Turn RIGHT onto MEADOW RD/ME-121 for 3.3 miles,
- ◆ Turn left into station entrance.

18 in. (457mm) Line Control Building

(b) (7)(F)

, a garage housing an emergency boat, and a maintenance room with an eyewash station. The building also houses an office, and bathroom.

(b) (7)(F)

Note: This building has a basement and the old part of the building has a metal floor over the basement.

457 mm (18 in.) Line Pump Room Building

This building houses two (2) mainline pumps for the 18 in. (457mm) line pumping loop.

24 in. (610 mm) Line Pumping Loop

It includes two (2) mainline pumps for the 24 in. (610 mm) main line. This is an outdoor area.

FIGURE 1.10 (cont'd)

**FACILITY PHYSICAL DESCRIPTION
North Waterford Pump Station**

TELEPHONE NUMBER: 207-583-2311

471 Hunts Corner Road,
North Waterford, Maine 04088

Access Directions to the Station from Portland, ME

- ◆ Take Rte 26 North to Norway, Maine,
- ◆ Turn left onto Route 118 / Waterford Road, and continue North for 13 miles,
- ◆ Turn right onto Hunts Corner Road by the Campground, and continue North for 2.3 miles,
- ◆ Turn right into the station entrance.

18 in. (457mm) and 24 in. (610 mm) Line Control Building

(b) (7)(F)

Maintenance / Office building

This building includes a garage housing an emergency boat, a maintenance room with an eyewash station and an office and bathroom.

18 in. (457mm) Line Pump Room Building

This building houses two (2) mainline pumps for the 18 in. (457mm) line pumping loop.

24 in. (610 mm) Line Pumping Loop

It includes three (3) mainline pumps for the 24 in. (610 mm) main line. This is an outdoor area.

FIGURE 1.10 (cont'd)

**FACILITY PHYSICAL DESCRIPTION
Shelburne Pump Station**

TELEPHONE NUMBER: 603-466-2011

535 State Road (US Route 2)
Shelburne, NH 03581

Access Directions to the Station from Bethel, ME

Via Maine Rte 2 West:

- ◆ Take Rte 2 West from Bethel, Maine 22 miles,
- ◆ Turn right into station entrance.

Access Directions to the Station from Gorham, NH

Via Maine Rte 2 East:

- ◆ Take Rte. 2 East from Gorham NH 3 miles,
- ◆ Turn left into Station entrance.

18 in. (457mm) Line Control Building

(b) (7)(F)

a garage housing an emergency response trailer, and a maintenance room with an eyewash station. The building also houses an office and bathroom.

24 in. (610 mm) Line Control Building

(b) (7)(F)

Note: This building has a basement and the old part of the building has a metal floor over the basement.

457 mm (18 in.) Line Pump Room Building

This building houses two (2) mainline pumps for the 18 in. (457mm) line pumping loop.

24 in. (610 mm) Line Pumping Loop

It includes two (2) mainline pumps for the 24 in. (610 mm) main line. This is an outdoor area.

FIGURE 1.10 (cont'd)

**FACILITY PHYSICAL DESCRIPTION
Lancaster Pump Station**

TELEPHONE NUMBER: 603-788-4461

309 Portland Street (US Route 2)
Lancaster, NH 03584

Access Directions to the Station from Lancaster, NH

Via NH Route 2

- ◆ From downtown Lancaster NH, Take Rte 2 East for 2.5 miles,
- ◆ Turn right into the station entrance.

Access Directions to the Station from Gorham, NH

Via NH Route 2

- ◆ From downtown Gorham NH, take Rte 2 West for 22 miles,
- ◆ Turn left into the station entrance.

18 in. (457mm) and 24 in. (610 mm) Line Control Building

(b) (7)(F)

Maintenance / Office building

This building includes a garage, a maintenance room with an eyewash station and an office and bathroom.

Warehouse building

This building includes system spare parts, an emergency boat and an emergency response trailer.

18 in. (457mm) Line Pump Room Building

This building houses two (2) mainline pumps for the 18 in. (457mm) line pumping loop.

24 in. (610 mm) Line Pumping Loop

It includes three (3) mainline pumps for the 24 in. (610 mm) main line. This is an outdoor area.

FIGURE 1.10 (cont'd)

**FACILITY PHYSICAL DESCRIPTION
Sutton Pump Station**

TELEPHONE NUMBER: 802-467-3311

4373 Barton Road (US Route 5)
Sutton, Vt. 05876

Access Directions to the Station from St. Johnsbury, VT

- ◆ Take I-93 North from St Johnsbury,
- ◆ Take the US-5 exit, Exit 23, toward Vt. Rte. 114/ Lyndonville/ Burke for 0.2 mi.,
- ◆ Turn Right onto Memorial Dr. / US-5. Continue to follow US-5 for 1.3 mi.,
- ◆ Turn Left onto Depot St. / US-5 for 0.1 mi.,
- ◆ Turn Right onto Main St. / US-5. Continue to follow US-5 for 3.4 mi.,
- ◆ Turn Sight Left onto Calendar Brook Rd for 4.6 mi.,
- ◆ Calendar Brook Rd. becomes Station Rd / TH-24 for 1.8 mi.,
- ◆ Turn LEFT onto US-5/ Lynburke Rd. for 2.3 mi.,
- ◆ Turn left into Station entrance.

18 in. (457mm) Line Control Building

(b) (7)(F)

a garage housing an emergency response trailer, and a maintenance room with an eyewash station. The building also houses an office and bathroom.

24 in. (610 mm) Line Control Building

(b) (7)(F)

Note: This building has a basement and the old part of the building has a metal floor over the basement.

457 mm (18 in.) Line Pump Room Building

This building houses two (2) mainline pumps for the 18 in. (457mm) line pumping loop.

24 in. (610 mm) Line Pumping Loop

It includes two (2) mainline pumps for the 24 in. (610 mm) main line. This is an outdoor area.

FIGURE 1.10 (cont'd)

**FACILITY PHYSICAL DESCRIPTION
Highwater Pump Station**

TELEPHONE NUMBER: 450-292-5909

99, Chemin du Pipeline,
Highwater, Quebec J0E 1X0

Access Directions to the Station from Montreal, Quebec (consult Access Diagram in the Montreal Pipe Line Limited Oil Spill Specific Response Plans)

Via Autoroute 10 east :

- ◆ Take exit 106,
- ◆ At the stop sign, turn left,
- ◆ Follow route 245 south toward Jay (Vermont),
- ◆ Follow the road until the end and follow the indications for route 243, South Bolton (15,6 km),
- ◆ Turn left on road 243 and drive 17 km until the railroad in Highwater,
- ◆ Turn left after the railroad crossing and drive 400 m. Turn right on Pipeline Road,
- ◆ Drive to the end of the Road, approximately 2.6 km where the pumping station is located.

Physical Description and Activities

General Control Building

(b) (7)(F)

an office area, lunchroom and washroom.

457 mm (18 in.) Line Pump Room Building

This building comprises the pump room for the 457 mm (18 in.) main line which houses three (3) booster pumps, the motor room, which include electrical switchgears for the 457 mm (18 in.) main line pumps, the maintenance room and a spare parts storage room. The motor room is also used for the emergency boat storage.

610 mm (24 in.) Line Control Building

(b) (7)(F)

610 mm (24 in.) Line Pumping Loop

The pumping loop includes three (3) booster pumps for the 610 mm (24 in.) main line system. This is an outdoor area.

FIGURE 1.10 (cont'd)

FACILITY PHYSICAL DESCRIPTION
Saint - Cesaire Pump Station

TELEPHONE NUMBER: 450-469-2394

148 Rang du Pipeline,
Saint-Cesaire, Quebec J0L 1T0

Access Directions to the Station from Montreal, Quebec (consult Access Diagram in the Montreal Pipe Line Limited Oil Spill Specific Response Plans)

From Autoroute 10 east :

- ◆ Take exit 48;
- ◆ At the stop sign, turn left on Road 233 North;
- ◆ Drive 1,1 km until Pipeline Road, following the directions for Road 233 North;
- ◆ Turn right on Pipeline Road;
- ◆ The pumping station is 200 m on the left inside of the road.

Physical Description and Activities

457 mm (18 in.) Line Control Building

(b) (7)(F)

, a garage housing an emergency boat, nitrogen cylinders (fixed and portable) and a maintenance room. The building also houses a bathroom with shower and eyewash located in the maintenance room.

610 mm (24 in.) Line Control Building

(b) (7)(F)

Note: This building has a basement and the old part of the building has a metal floor over the basement.

457 mm (18 in.) Line Pump Room Building

This building houses three (3) booster pumps for the 457 mm (18 in.) line pumping loop.

610 mm (24 in.) Line Pumping Loop

It includes the back pressure system and one (1) booster pump for the 610 mm (24 in.) main line. This is an outdoor area.

457 mm (18 in.) Line Back Pressure System

This is where the backpressure on the 457 mm (18 in.) main line system is controlled. This is an outdoor area.

FIGURE 1.11 (cont'd)

FACILITY PHYSICAL DESCRIPTION
North Tank Field

ADDRESS: 8398, Broadway St. North
Montreal (Quebec)
TELEPHONE NUMBER: 514-648-4656

Access Directions to the Tank Field (consult Access Diagram in the Montreal Pipe Line Limited Oil Spill Specific Response Plans)

From Autoroute 40:

- ◆ Take Exit 83 (Avenue Marien/Blvd. St. Jean Baptiste;
- ◆ Take Marien North
- ◆ Go west on Metropolitan Service Road;
- ◆ Turn right on Broadway North;

Physical Description and Activities

Peripheral Fence of the North Tank Field

The North Tank Field perimeter is entirely fenced. The main access is provided through an entry gate located on the eastern side of the site located at 8398 Broadway North. There is also a secondary access on the southern side of the site, controlled by another gate installed at Road "L" and going to the adjoining Imperial Oil property.

Above Ground Storage Tanks

Six (6) above ground storage tanks (TK-660, 661, 662, 663, 664 and 665, consult Drawing D-3857 in Appendix A) with internal floating roofs, used for the storage and transfer of crude oil within the fenced perimeter of the North Tank Field. Approximate dimensions, covered area and nominal capacity of each tank are as follow:

- ◆ Diameter 220 ft. (67.1 m)
- ◆ Height 54 ft. (15.6 m)
- ◆ Area 38,000 sq. ft. (3,500 m²)
- ◆ (b) (7)(F) [REDACTED]

Each tank is completely surrounded by dikes, creating a retention basin that can contain up to 125 % of the tank nominal volume in case of a leak or spill. A service road is constructed at the top of the peripheral dikes, enabling easy access around the three (3) groups of tanks (TK-660/661, TK662/664, and TK663/TK665). Ramps are provided at various locations from the service roads to get access inside the retention basins.

Valve 695

Valve 695 is located at the entry gate located on the eastern side of the site located at 8398 Broadway North and is near the demarcation point between Enbridge Line 9 and Montreal Pipe Line. Crude oil is received from Line 9 and directed via NTF 30" pipeline to Manifold 2 or Manifold

FIGURE 1.11 (cont'd)

1 for delivery to nearby refinery and terminals or into Tanks 663, 664 or 665 for storage.

Oil stored in Tanks 663, 664 or 665 can be transferred to Manifold 2 or Manifold 1 via NTF 24" or NTF 30" pipelines using Booster pumps 601, 602 and 605.

Pipelines

The pipelines used to transfer the crude oil to or from the North Tank Field are installed on above ground supports. The pipelines enter the fenced perimeter of the tank field at Road "L" from the adjacent Imperial Oil property, going afterward along 20th Avenue up to Road "M", following it until reaching 21st Avenue. At this last location, valves and above ground pipes enable crude oil transfer between the pipelines and Tanks TK-660/661. The pipelines go further along 20th Avenue where other valves and pipes enable crude oil transfer to tanks TK-662/664 and Tanks TK663/TK665.

Drainage Water Ditches and Collection Basin

Conduits are installed at the base of the dykes and are controlled by valves, enabling transfer of accumulated rainwater inside the retention basins into the main drainage ditches located along 21st Avenue and Road "M". Drainage water is then canalled and discharged into a collection basin located at the corner of the 22nd Avenue and Road "O".

Underground drainage trench, constructed near the south-western side of the tank field on the Imperial Oil property, enable the interception of surface runoff water on adjacent lands.

Drainage water outside the North Tank Field is directly discharged into the municipal sewer network located along Broadway North.

(b) (7)(F)




Figure 1.12

DATES AND TYPES OF SUBSTANTIAL EXPANSIONS

Oil Storage Capacity:

South Portland:

- 1941 Construction of Pier 1 and original tank farm facility including six storage tanks (1, 2, 10, 11, 12, 13)
- 1944 Construction of two additional storage tanks (8, 9)
Additional storage capacity: (b) (7)(F) [REDACTED]
Total storage capacity: (b) (7)(F) [REDACTED]
- 1950 Construction of four additional storage tanks (3, 4, 5, 6)
Additional storage capacity: (b) (7)(F) [REDACTED]
Total storage capacity: (b) (7)(F) [REDACTED]
- 1953 Construction of two additional storage tanks (19, 20)
Additional storage capacity: (b) (7)(F) [REDACTED]
Total storage capacity: (b) (7)(F) [REDACTED]
- 1955 Construction of two additional storage tanks (21, 22)
Additional storage capacity: (b) (7)(F) [REDACTED]
Total storage capacity: (b) (7)(F) [REDACTED]
- 1956 Construction of Pier 2 complete
- 1957 Construction of one additional storage tank (26)
Additional storage capacity: (b) (7)(F) [REDACTED]
Total storage capacity: (b) (7)(F) [REDACTED]
- 1960 Construction of one additional storage tank (23)
Additional storage capacity: (b) (7)(F) [REDACTED]
Total storage capacity: (b) (7)(F) [REDACTED]
- 1965 Construction of two additional storage tanks (24, 25)
Additional storage capacity: (b) (7)(F) [REDACTED]
Total storage capacity: (b) (7)(F) [REDACTED]
- 1966 Construction of one additional storage tank (27)
Additional storage capacity: (b) (7)(F) [REDACTED]
Total storage capacity: (b) (7)(F) [REDACTED]
- 1969 Construction of one additional storage tank (28)
Additional storage capacity: (b) (7)(F) [REDACTED]
Total storage capacity: (b) (7)(F) [REDACTED]
- 1970 Construction of one additional storage tank (18)
Additional storage capacity: (b) (7)(F) [REDACTED]
Total storage capacity: (b) (7)(F) [REDACTED]

Figure 1.12 Cont'd

DATES AND TYPES OF SUBSTANTIAL EXPANSIONS	
Oil Storage Capacity:	
North Tank Field:	
1999	Lease and upgrading of Tanks 660, 661, 662, 664 Additional storage capacity: (b) (7)(F) Total storage capacity: (b) (7)(F)
2003	Construction of two additional storage tanks (663 and 665) Additional storage capacity: (b) (7)(F) Total NTF storage capacity: (b) (7)(F)
Pumping Equipment:	
1941	Installation of 12-inch mainline pumping equipment.
1950	Installation of 18-inch mainline pumping equipment.
1965	Installation of 24-inch mainline pumping equipment.
1968	Installation of Pump #5 transfer unit.
1982	12-inch mainline pumping equipment idled.
1986	18-inch mainline pumping equipment idled.
1999	18-inch pumping equipment returned to service.
2000	18-inch pumping equipment expanded.
2011	18-inch pumping equipment idled.
OTHER FACILITY DATA	
<ul style="list-style-type: none">Additional facility data (including storage information) is provided in Appendix H and discharge detection and inspection information is provided in the SPCC Plan located in Section 7.	

This Page Intentionally Left Blank

2.0 NOTIFICATION PROCEDURES

This section is a guide for notification procedures that should be implemented immediately after discovering a discharge or emergency incident. This includes oil, hazardous materials or hazardous waste spills, fire, explosion, bomb threats, hostage situations, natural disaster and emergency medical situations. Internal and external notifications are described separately for clarification purposes only. All notifications are of extreme importance and must be completed in a timely manner.

Additionally, this section identifies the different types of alarms corresponding to possible emergencies.

2.1 NOTICE OF AN EVENT

This section describes the initial notification procedures necessary to activate the Plan, which includes mobilization of the emergency response team organization and equipment, appropriate local emergency responders, governmental agencies and contractors with additional equipment as needed.

When a company employee discovers a spill, or otherwise becomes aware of a potential spill or other emergency situation affecting the pipeline system, the pier or the terminal operation, **the employee shall immediately call the Controller via telephone or UHF/VHF radio.**

Whenever notice of a release or potential incident is received by telephone, the company employee initially receiving the information should complete as much as possible (do not delay notification pending collection of all information) on the Spill/ Emergency Reporting Checklist (Figure 2.1). Once the information is documented, proceed with the internal and external notification procedures as detailed in this section.

The employee receiving notice of or reporting a spill or emergency should reference Figure 2.1 and determine answers to the following questions:

- Where is the spill or emergency? Find out exactly where the spill or emergency was first discovered. Where in a PMPL facility, on what road, near what bridge, stream, house or other landmark? Near what MP/KM post on the right-of-way?

Example: “Manifold 2 in Montreal” or “Halfway between MP ____ (or KM ____),
or: “200 feet (or meters) north of MP ____ (or KM ____)”.

- Both the Alignment Maps and the Response Maps in this plan are keyed to the KM/MP post numbers in order to show locations for all recommended oil control check points.
- In addition to any KM/MP post numbers reported by an observer, nearby landmarks should be identified. Names of lakes, ponds, bridges, and highway routes are important to all personnel working in the area.

FIGURE 2.1

EMERGENCY / SPILL REPORTING FORM & CHECK LIST

2.1 NOTICE OF AN EVENT (Cont'd)

- How serious is the spill or emergency? Is oil flowing along the ground, or is it flowing in a river or a street? Is it just discoloring the ground? Does it threaten a body of water? Is there a fire?
- Who discovered the spill or emergency? Obtain name, address, and where they can be reached by phone or by messenger.
- Can the spill observer guide response personnel to the spill or emergency location? Is the person available to guide Company personnel to the site? Will they wait by the phone until personnel can reach them?
- Does the spill or emergency observer have any special suggestions to minimize the consequences based upon conditions observed or reported by the person discovering the event?

[SEE EMERGENCY/ SPILL REPORTING CHECKLIST]

FIGURE 2.1 EMERGENCY / SPILL REPORTING FORM & CHECK LIST

Date: _____ Time: _____

INCIDENT DESCRIPTION

Reporter's Full Name: _____ Position: _____
 Day Phone Number: _____ Evening Phone Number: _____
 Company: _____ Organization Type: _____
 Facility Address: _____ Owner's Address: _____
 Facility Latitude: _____ Facility Longitude: _____
 Emergency / Spill Location: _____
 (if not at Facility) _____
 Reporter's Full Name (If other than employee): _____
 Day Phone Number: _____
 Company: _____
 Facility Address: _____
 Responsible Party (If Known): _____
 Company: _____ Organization Type: _____
 Facility Address: _____
 Telephone Number: _____
 Calling for Responsible Party (Y/N): _____
 Were materials discharged (Y/N)? _____ Type of Crude Spilled: _____
 Source and/or cause of discharge: _____
 Date: _____ Time: _____ Does it Threaten a Body of Water (Y/N)? _____
 Nearest City: _____
 County: _____ State: _____ Zip code: _____
 Section: _____ Township: _____
 Distance from City: _____ Direction from City: _____
 Container Type: (Above ground /Below ground/ Unknown) _____ Container Storage Capacity: _____
 Facility Oil Storage Capacity: _____
 Mile post or River Mile: _____ Closest Pump Station: _____
 Material: _____

Total Quantity Released	Discharged Material	Water Impact (Yes or No)	Quantity into Water

Does Fire threaten Surrounding installations? _____ Source of Fire: _____

RESPONSE ACTION(S)

Action(s) taken to Correct, Control, or Mitigate Incident: _____

Number of Injuries: _____ Number of Fatalities: _____
 Evacuation(s): _____ Number Evacuated: _____
 Damage Estimate: _____
 More information about impacted medium: _____

CALLER NOTIFICATIONS

National Response Center (NRC): 1-800-424-8802 _____
 Additional Notifications (Circle all applicable): USCG EPA State Province TSB Environment Canada MELCC Other

ADDITIONAL INFORMATION

Any information about the incident not recorded elsewhere in this report: _____

NOTE: DO NOT DELAY NOTIFICATION PENDING COLLECTION OF ALL INFORMATION.

Figure 2.1a SPILL REPORTING FORM & CHECK LIST GUIDELINES

- ◆ Do not report information that has not been verified.
- ◆ Never speculate as to the cause of the incident or make any acknowledgement of responsibility.
- ◆ Document persons/agencies notified and content of message.
- ◆ Provide as much information as possible as outlined below.
- ◆ DO NOT DELAY reporting due to incomplete information.
- ◆ Care should be exercised in accurately estimating the quantity of oil spilled and, if possible, any estimate should be cleared with the PMPL President before given to public officials or news media. It is important not to underestimate the potential quantity of oil when undertaking measures to contain it.

SPILL, FIRE/EXPLOSION: REFER TO APPROPRIATE BOX; BOMB THREAT: REFER TO APPROPRIATE FORM

WARNING INFORMATION

OIL SPILL WARNING INFORMATION

- All crude oil is flammable and toxic.
- Do not approach oil spill.
- H₂S is lethal and has no odor at lethal concentration.
- Leave the area.

HAZARDOUS WASTE SPILL WARNING INFORMATION

- Liquid hazardous waste may be flammable and / or toxic (e.g. Mercury, Mineral Spirits)
- Solid hazardous waste is toxic (e. g.. lead paint chips)
- Do not approach spill without proper PPE

2.2 Alarm Systems

(b) (7)(F)



Alarm Reporting

In Canada, in non fire alarm cases, after receiving the signal at its monitoring station, SIGNAL will call the Emergency Telephone number and will precisely describe the alarm, i.e. which pump station, the zone involved and the type of alarm. If the alarm occurs outside regular business hours, the SIGNAL monitoring station will still call the Emergency Telephone number and the information will be transmitted to the PMPL Controller through the tele-messaging service. The PMPL Controller will then call the MPL supervisor on stand-

2.2 Alarm Systems (cont'd)

by. In case the SIGNAL representative is not explicit, the MPL representative receiving the call shall question him or her and get the information he/she needs. For fire alarm cases, the SIGNAL representative shall directly call the appropriate Fire Department and then the PMPL Controller.

Following a call related to theft or equipment failure, a MPL Representative will have to take the appropriate measures:

1. Call the Station to ensure it is not a fellow employee who has accidentally tripped the alarm.
2. Call the appropriate local or provincial police (see Figure 2.13 for the appropriate city).

The MPL representative should instruct the concerned authorities on the location of the alarm and its nature. He should also ask the Police Department to call back to inform him about the situation.

All other alarms will require a call to the Equipment Maintenance Personnel.

Under certain circumstances it may be necessary for personnel visiting the station to report alarms, faulted zones or system problems. In that case, all communications should be directed to the Equipment Maintenance Personnel.

If need be, the MPL Representative can report problems to the SIGNAL Office, refer to Figure 2.15 for telephone numbers.

In the U.S., the PMPL Controller alerts PMPL Maintenance personnel or the local authorities, as appropriate.

2.3 Internal Notifications

Internal notifications will be made as outlined in Figures 2.2 and 2.3.

Figure 2.2

INTERNAL / SMT / EXTERNAL NOTIFICATION (See also Figure 2.3)

The typical notification responsibilities for each person potentially involved in the initial response are as follows:

First Company Person Notified / On-Scene

- Immediately notify the **Controller** (See Figure 2.3)
- Notify **9-1-1** for confirmed emergencies (Fire, Serious Injury, Oil Release, etc.)

Controller

- Notify **Operations Manager for U.S. or Quebec Area Manager for Canada / On-Call Manager** (if not available, assume the response duties of the On-Call Manager until assumed by other PPL staff)
- Contact **local emergency officials via the Public Safety Answering Point PSAP (For U.S. Incidents Only)**

Operations Manager / Quebec Area Manager

- Activate **Local Response Resources** local assistance agencies (police, fire, etc.) (PMPL response personnel/equipment and/or local contract resources, etc. as appropriate; see Figures 2.5, 2.6, 2.10 – 2.13)
- Notify **President (QI / Emergency Coordinator) or designate** (Figure 2.6)
- Notify as appropriate based on location and situation (Figures 2.5 and 2.6):
 - Operations / Maintenance Supervisors**
 - Maintenance Technicians**
 - Activate additional response resources (OSROs, Contractors, Co-ops, etc.) as appropriate (See Figures 2.14 and 2.15)

Figure 2.2 (cont'd)

INTERNAL / SMT / EXTERNAL NOTIFICATION (Cont'd)

- Conduct **External Agency Notifications** (NRC, Federal, State or Provincial Agencies, (e.g. USCG, TSB, PHMSA as appropriate; see Figures 2.8 and 2.9)

EHS Advisor

- Activate **PMPL Spill Management Team**, as necessary (Figure 2.7)
- Notify **Engineering Manager** (Figure 2.6)
- Activate **Witt / O'Brien Group Spill Management Team**, as appropriate (Figure 2.7)
- Commission NRDA as appropriate

President or designate (QI / Emergency Coordinator)

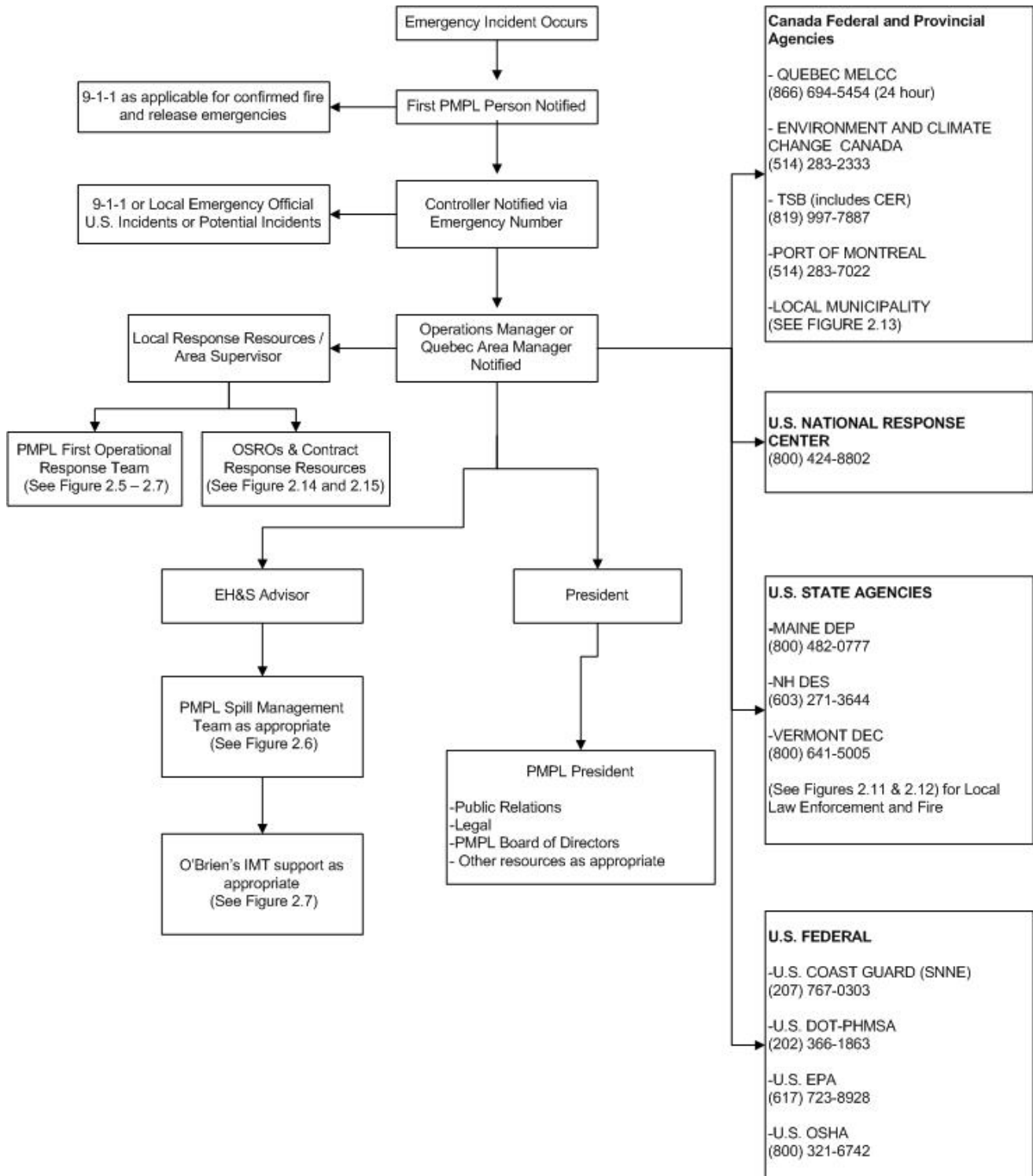
- Notify **Legal Representation** (Figure 2.7)
- Notify **city officials if hazard to public or considerable damage to property of others may result.** (See PMPL Communications Manual)
- Notify **Corporation Directors (as appropriate)**

Corporate Controller (or Treasurer)

- Notify Public Relations as directed by the President (See Communications plans)

It is critical that the above members are notified immediately. Refer to the Internal Notification Sequence (Figure 2.3) for a flow diagram of the notification procedures.

**FIGURE 2.3
INTERNAL NOTIFICATION SEQUENCE**



**FIGURE 2.4
INTERNAL NOTIFICATION REFERENCES**

LOCATION			
FACILITY AREA	OFFICE	FAX NUMBER	NOTIFIED DATE/TIME
Portland Pipe Line Corporation	207-767-3231(24 hour) 866-253-7351(24 hour)	207-767-0411	
Raymond Pump Station	207-655-4567	207-655-2807	
North Waterford Pump Station	207-583-2311	207-583-4117	
Shelburne Pump Station	603-466-2011	603-466-5595	
Lancaster Pump Station	603-788-4461	603-788-3813	
Sutton Pump Station	802-467-3311	802-467-1007	
Highwater Pump Station	450-292-5909	450-292-5231	
St. Cesaire Pump Station	450-469-2394	450-469-5689	
Montreal Terminal	514-645-4580	514-645-7663	
Montreal General Office	514-645-4589 (24 hour) 1-888-977-4589(24 hour)		

**FIGURE 2.5
INTERNAL NOTIFICATION REFERENCES**

MONTREAL TERMINAL and CANADA MAINLINE LOCAL RESPONSE TEAM CALLOUT LIST					
POSITION/TITLE	NAME	OFFICE	HOME*	OTHER	NOTIFIED DATE/TIME LOCATION
President / Qualified Individual	[REDACTED]	[REDACTED]	[REDACTED]	(b) (6) [REDACTED]	
Quebec Area Manager	(b) (6) [REDACTED]	[REDACTED]		[REDACTED]	
Maintenance Supervisor	(b) (6) [REDACTED]	[REDACTED]	[REDACTED]	[REDACTED]	
Maintenance Technician	(b) (6) [REDACTED]	[REDACTED]		[REDACTED])	
Terminal Operator	(b) (6) [REDACTED]	[REDACTED]	[REDACTED]	[REDACTED]	
Terminal Operator	(b) (6) [REDACTED]	[REDACTED]	[REDACTED]	[REDACTED]	
Maintenance Technician	(b) (6) [REDACTED]	[REDACTED]	[REDACTED]	[REDACTED]	
Administrative Assistant	(b) [REDACTED]	[REDACTED]			

**FIGURE 2.6
INTERNAL NOTIFICATION REFERENCES**

SOUTH PORTLAND TERMINAL and U.S. MAINLINE LOCAL RESPONSE TEAM AND CORPORATE CALLOUT LIST					
POSITION/TITLE	NAME	OFFICE	HOME*	OTHER	NOTIFIED DATE/TIME LOCATION
Incident Commander / President <i>QI / EC</i>	(b) (6)				
Planning Section Chief / Engineering Manager <i>Alt QI / EC</i>	(b) (6)				
Operations Section Chief /Operations Manager <i>Alt QI / EC</i>	(b) (6)				
Controller	(b) (6)				
Oil Movements Scheduler	(b) (6)				
First Operational Response Team Lead	(b) (6)				
Maintenance Technicians Terminal Operators	(b) (6)				
	(b) (6)				
First Operational Response Team	(b) (6)				
Welder	(b) (6)				

NOTE: Personnel responding to a spill at the Portland Pipe Line Corporation Marine Terminal and Tank Farm receive regular training in HAZWOPER, SPCC plan, and ICS.

NOTE: Local Response Team personnel are capable of responding to the South Portland Marine Terminal and Tank Farm within 120 minutes. All personnel can be reached 24 hours per day.

**FIGURE 2.7
INTERNAL NOTIFICATION REFERENCES**

INTERNAL NOTIFICATIONS – SPILL MANAGEMENT TEAM

POSITION/ TITLE	NAME	OFFICE	HOME*	OTHER	NOTIFIED DATE/TIME LOCATION
COMMAND STAFF					
<i>Qualified Individual / Incident Commander</i>	(b) (6)				
<i>Deputy Incident Commander</i>	(b) (6)				
<i>Safety Officer</i>	(b) (6)				
<i>External Liaison</i>	(b) (6)				
<i>Public Affairs Officer</i>	(b) (6)				
<i>Regulatory / Legal Officer</i>	(b) (6)				
	(b) (6)				
	(b) (6)				
	(b) (6)				
OPERATIONS SECTION					
<i>Operations Section Chief</i>	(b) (6)				
<i>Recovery and Protection Branch</i>	(b) (6)				
<i>On-Scene Commander</i>	(b) (6)				
<i>Wildlife Branch</i>	(b) (6)				

**FIGURE 2.7
INTERNAL NOTIFICATION REFERENCES**

INTERNAL NOTIFICATIONS – SPILL MANAGEMENT TEAM

POSITION/TITLE	NAME	OFFICE	HOME*	OTHER	NOTIFIED DATE/TIME LOCATION
<i>Clean-up unit Contractors</i>	[REDACTED]	[REDACTED]		(b) (6)	
	[REDACTED]	[REDACTED]		[REDACTED]	
	[REDACTED]	[REDACTED]		[REDACTED]	
	[REDACTED]	[REDACTED]		[REDACTED]	
	[REDACTED]	[REDACTED]		[REDACTED]	
	[REDACTED]	[REDACTED]		[REDACTED]	
	[REDACTED]	[REDACTED]		[REDACTED]	
PLANNING SECTION					
<i>Planning Section Chief</i>	(b) (6)	[REDACTED]	[REDACTED]	[REDACTED]	
<i>Environmental Specialist Unit Leader (Resources at Risk, Disposal, Alternate Response Technologies)</i>	(b) (6)	[REDACTED]		[REDACTED]	
<i>Situation Unit Leader</i>	(b) (6)	[REDACTED]		[REDACTED]	
<i>Documentation Unit Leader</i>	(b) (6)	[REDACTED]		[REDACTED]	
	[REDACTED]	[REDACTED]		[REDACTED]	
<i>Resource Unit Leader</i>	(b) (6)	[REDACTED]		[REDACTED]	
<i>Technical Specialists/ Additional ICS support</i>	(b) (6)	[REDACTED]		[REDACTED]	
	[REDACTED]	[REDACTED]		[REDACTED]	

**FIGURE 2.7
INTERNAL NOTIFICATION REFERENCES**

INTERNAL NOTIFICATIONS – SPILL MANAGEMENT TEAM

POSITION/TITLE	NAME	OFFICE	HOME*	OTHER	NOTIFIED DATE/TIME LOCATION
LOGISTICS SECTION					
<i>Logistics Section Chief</i>	(b) (6)				
<i>Service Branch Director</i>	(b) (6)				
<i>Medical Unit Leader</i>	(b) (6)				
<i>Support Branch Director</i>	(b) (6)				
<i>Supply Unit Leader</i>	(b) (6)				
<i>Communications Unit Leader</i>				(b) (6)	
	(b) (6)				
	(b) (6)				
<i>Security Unit Leader</i>	(b) (6)				
<i>I.T. Unit Leader</i>	(b) (6)				
FINANCE SECTION					
<i>Finance Section Chief</i>	(b) (6)				
<i>Claims / Insurance Suncor Insurance</i>	(b) (6)				
<i>Time Unit Leader</i>	(b) (6)				
<i>Cost Unit Leader</i>	(b) (6)				
<i>Procurement Unit Leader</i>	(b) (6)				

CONTRACT RESOURCES SUPPLEMENTARY – PPL SPILL MANAGEMENT TEAM

POSITION/TITLE	NAME	OFFICE	HOME	OTHER	NOTIFIED DATE/TIME LOCATION
<i>Consulting on All SMT Positions</i>	(b) (6)				
<i>The Response Group IAP Software / GIS Mapping and Modeling</i>		(b) (6)			

2.4 EXTERNAL NOTIFICATION

In the event of an oil spill into a stream, a river, on land, or a fire/explosion with release of hazardous substances or wastes, or a serious injury, various government authorities in the field of environmental protection (TSB, MELCC, Environment Canada, EPA, DEP, DES, etc.) must be notified as soon as possible after the discovery of the leak. These organizations will participate in identifying which resources are threatened and will propose a set of priorities of protection, confinement, recovery and clean-up measures to be implemented, depending on available resources, environmental features in the area, time of the year, weather conditions and so on.

It is the on shift / on call supervisor (initial Incident Commander who is responsible to notify the appropriate regulatory external governmental authorities or organization. The on-shift/ on call supervisor is also responsible for notifying the Emergency Coordinator (EC). The home addresses of the ECs are not included in this plan as the plan is distributed to numerous government agencies and local entities and the information is therefore subject to access by persons beyond emergency response purposes. To protect the privacy of PMPL employees, only the names and contact information for ECs is provided and those persons potentially acting as ECs are either on site or immediately available on call for the 24 hour operations at PMPL. The IC may also designate a knowledgeable person to make the telephone calls (e.g. environmental specialist, legal advisor, etc.).

- The typical external notification responsibilities for each person potentially involved in the initial response are those as indicated in Figure 2.2.
- Federal, state, provincial and local reporting requirements and phone numbers are in Figure 2.3
- Contacts for spill response resources such as clean up contractors, experts/consultants technical support and other support services are listed in Figure 2.7.

The Operations Manager will also have to make some external phone calls to clean-up contractors, etc.

EXTERNAL REPORTING GUIDELINES

SPILL REPORTING GUIDELINES

- Review Figure 2.8 for spill reporting requirements and conditions and follow required reporting.
- Never include information which has **not been verified.**
- **Never speculate** as to the cause of an incident or make any acknowledgment of liability.
- **DOCUMENT:**
 - Agency notified
 - Time agency notified
 - Person notified
 - Content of message given
 - Incident number if applicable
- **DO NOT DELAY** reporting due to incomplete information.

**FIGURE 2.8
EXTERNAL NOTIFICATION REFERENCE**

FEDERAL NOTIFICATIONS – ALL STATES		
REQUIRED EXTERNAL NOTIFICATIONS		
AGENCY	TELEPHONE NUMBER	REPORTING REQUIREMENTS (IF ANY)
National Response Center Washington, D.C. (NRC)	(800) 424-8802* (202) 267-2675	TYPE: All spills that impact or threaten navigable water. VERBAL: Immediate notification required. WRITTEN: Not required.
Department of Transportation Information Resources Manager Office of Pipeline Safety Pipeline and Hazardous Materials Safety Administration US Dept. of Transportation Room E22-321, 1200 New Jersey Avenue, S.E. Washington, DC 20590 Fax Filing: (202) 366-4566	PHMSA (202) 366-1863 http://nrc.uscg.mil	All spills that impact or threaten navigable water must be reported to the National Response Center, 800-424-8802. In addition, some spill incidents must be reported directly to the Pipeline and Hazardous Materials Safety Administration. NOTE: PHMSA has requested direct notification for any pipeline related incidents reported to NRC. PHMSA shall be notified within 1 hour of a confirmed incident or accident. <u>Telephonic or Electronic Report:</u> The operator must report incidents by calling the Department of Transportation Crisis Management Center, 202-366-1863 (24 hours), when: The operator discovers a release of the hazardous liquid transported resulting in an incident requiring a Written Report as described on Page 2-18 and: <ol style="list-style-type: none"> (1) a person dies or has injuries requiring hospitalization; (2) the incident results in a fire or explosion not intentionally set by the operator; (3) the incident causes property damage including cleanup and recovery costs, lost product costs, and damage to the operator's and / or other entity's property exceeding \$50,000; (4) the incident pollutes a stream, river, lake, reservoir, or other similar body of water and violates applicable water quality standards, discolors the surface of the water or adjoining shoreline, or deposits a sludge or emulsion beneath the surface of the water or upon adjoining shorelines; or (5) the operator judges the incident is significant even though it did not meet the above criteria.

US FEDERAL

*24-Hour Number

**FIGURE 2.8 (Cont'd)
EXTERNAL NOTIFICATION REFERENCE**

US FEDERAL

FEDERAL NOTIFICATIONS – ALL STATES		
REQUIRED EXTERNAL NOTIFICATIONS		
AGENCY	TELEPHONE NUMBER	REPORTING REQUIREMENTS (IF ANY)
<p>(continued) Department of Transportation</p> <p>Information Resources Manager Office of Pipeline Safety Pipeline and Hazardous Materials Safety Administration US Dept. of Transportation Room E22-321, 1200 New Jersey Avenue, S.E. Washington, DC 20590 Fax Filing: (202) 366-4566</p> <p>*24 Hour Number*</p>	<p>PHMSA (202) 366-1863</p>	<p>The telephonic reports to the Pipeline and Hazardous Materials Safety Administration must include:</p> <ul style="list-style-type: none"> (1) the operator's name and address, identification # of operator; (2) the reporter's name and telephone number; (3) the incident location; (4) the incident time; (5) fatalities and personal injuries; and (6) all the significant facts the operator knows about the incident including the incident cause and damages. <ul style="list-style-type: none"> (a) Calculation. A pipeline operator must have a written procedure to calculate and provide a reasonable initial estimate of the amount of released product. (b) New information. An operator must provide an additional telephonic report to the NRC if significant new information becomes available during the emergency response phase of a reported event at the earliest practicable moment after such additional information becomes known. <p><u>Accident Report:</u> The operator must file Department of Transportation Form 7000-1 within thirty days of an incident when the following criteria are met:</p> <p>Hazardous liquid is released and</p> <ul style="list-style-type: none"> (1) the incident results in a fire or explosion not intentionally set by the operator; (2) five gallons or more of hazardous liquid is released; excepting no report is required for a release of less than 5 barrels resulting from maintenance activity and the release: <ul style="list-style-type: none"> (a) does not meet the other written report criteria, (b) does not meet the telephonic reporting criteria listed under Telephonic Reporting (page 2-18) in item 4 (pollution of a stream, river, lake, reservoir, or other similar body of water), (c) is confined to company property or pipeline ROW, and (d) is cleaned up promptly. (3) a person dies; (4) a person's injuries require him or her to be hospitalized; or (5) the incident causes property damage including cleanup and recovery costs, lost product costs, and damage to the operator's and/or other entity's property exceeds \$50,000. <p>Department of Transportation Form 7000-1 is in Appendix K.</p>

**FIGURE 2.8 (Cont'd)
EXTERNAL NOTIFICATION REFERENCE**

US FEDERAL

FEDERAL NOTIFICATIONS – ALL US STATES		
REQUIRED EXTERNAL NOTIFICATIONS		
AGENCY	TELEPHONE NUMBER	REPORTING REQUIREMENTS (IF ANY)
Occupational Safety and Health Administration (OSHA) Washington, D.C.	(800) 321-6742*	TYPE: All work-related fatalities within 8 hours, and All inpatient hospitalizations, amputations, and losses of an eye within 24 hours of confirmation of the incident. VERBAL: Fatalities within 8 hours; Hospitalizations, amputations, losses of an eye within 24 hours WRITTEN: As requested.
RECOMMENDED EXTERNAL NOTIFICATIONS		
AGENCY	CONTACT INFORMATION	
U.S. Environmental Protection Agency (EPA): Report to the EPA Regional Administrator within 60 days whenever the facility has discharged more than 1,000 U.S. gallons of oil in a single discharge or discharged more than 42 U.S. gallons of oil in each of two discharges occurring within any twelve month period.	A call to the NRC satisfies the reporting requirements for these two agencies. However, a follow-up call is strongly recommended. Phone numbers are located in the State Specific Notification section that follows.	
U.S. Coast Guard		
Local Emergency Planning Committee (LEPC)	See State Notification Lists	
State Emergency Response Commission (SERC)	See State Notification Lists – DEP	

*24-Hour Number

**FIGURE 2.9
EXTERNAL NOTIFICATION REFERENCE**

**FEDERAL NOTIFICATIONS – QUEBEC
REQUIRED EXTERNAL NOTIFICATIONS**

AGENCY	TELEPHONE NUMBER	REPORTING REQUIREMENTS (IF ANY)
Transportation Safety Board (TSB)	Incident Line 819-997-7887 Facsimile 819-953-7876	Incident concerning the pipeline: Canada Specific Reporting Requirements The Canada Energy Regulator (CER) and the Transportation Safety Board of Canada (TSB) have agreed to introduce single-window reporting during pipeline incidents/occurrences. Arrangements have been made for the TSB to receive these reports on behalf of both agencies. Effective September 1, 1999, all incidents and occurrences should be reported to the TSB Occurrence Hot Line (for telephone number, see Figure 2.9). Preliminary and detailed incidents reports should also be reported to the TSB. The TSB will forward all applicable reports to the CER. Email: PipelineNotifications@tsb.gc.ca Section 1 of the Onshore Pipeline Regulation “Incident” means an occurrence that results in: (a) the death of or serious injury to a person (b) a significant adverse effect on the environment (c) an unintended fire or explosion (d) an unintended or uncontained release of LPV hydrocarbons in excess of 1.5 m3 (e) an unintended or uncontrolled release of gas or HVP hydrocarbons: (f) the operation of a pipeline beyond its design limits as defined under CSA Z662 or CSA Z276 or any operating limits imposed by the Board
Canada Energy Regulator (CER)	Incident Line 403-299-2773	Accident involving an employee, occupational disease or other hazardous occurrence. Call the TSB Incident Line listed above to report significant incidents on CER regulated pipelines and facilities, report all events in the CER’s Online Event Reporting System (OERS) (https://cer-rec.gc.ca/ers/home/index). See Section 1.6. Section 1 of the Onshore Pipeline Regulation “Incident” means an occurrence that results in: (a) the death or serious injury to a person (b) a significant adverse effect on the environment (c) an unintended fire or explosion (d) an unintended or uncontrolled release of LPV hydrocarbons in excess of 1.5 m3 (e) an unintended or uncontrolled release of gas or HPV hydrocarbons (f) the operation of a pipeline beyond its design limits as defined under CSA Z662 or CSA Z276 or any operating limits imposed by the Board From the Oil and Gas Occupational Safety and Health Regulations (DORS/87-612) of the Canadian Labour Code (Ministry of Human

CANADA FEDERAL

**FIGURE 2.9 (cont'd)
EXTERNAL NOTIFICATION REFERENCE**

FEDERAL NOTIFICATIONS – QUEBEC		
REQUIRED EXTERNAL NOTIFICATIONS		
AGENCY	TELEPHONE NUMBER	REPORTING REQUIREMENTS (IF ANY)
CER (continued)		<p>Resources), MPL shall report the date, time, location and nature of any accident, occupational disease or other hazardous occurrence, as soon as possible but not later than 24 hours after becoming aware of the occurrence, where the occurrence resulted in one of the following circumstances:</p> <ul style="list-style-type: none"> (a) the death of an employee; (b) a missing person; (c) a disabling injury to an employee; (d) the implementation of emergency rescue, revival or evacuation procedures; (e) a fire or explosion that threatened the safety or health of an employee; (f) the free fall of an elevating device that rendered the elevating device unsafe for use by an employee; (g) an accidental accumulation, spill or leak of a hazardous substance; <p>or</p> <ul style="list-style-type: none"> (h) the loss of or damage to support craft. <p>A written report of the accident, occupational disease or other hazardous occurrence shall be submitted by the employer within 14 days after the occurrence to the Canada Energy Regulator. The Hazardous Occurrence Investigation Report shall be used to report the medical incident (see Figure 3-4).</p> <p>Section 52 of the Onshore Pipeline Regulation requires oil pipeline companies under the Board's jurisdiction to report incidents involving their pipelines to the TSB. Guidance notes for the OPR set out the content and timing of these reports. This section and its guidance notes are reproduced in the following paragraphs.</p> <p>Reportable Incidents (Section 52 of Onshore Pipeline Regulations)</p> <ul style="list-style-type: none"> (1) A company shall immediately report to the Board of any incident relating to the construction, operation or abandonment of its pipeline that and shall submit a preliminary report to the Board as soon as is practicable (2) After notification of an incident, an inspection officer may partially or completely relieve a company from the requirement to submit a preliminary and detailed incident report. <p>A Preliminary Detailed Incident Report (Guidance Notes for the Onshore Pipeline Regulations – consult Appendix H forms) should be prepared by the Deputy Incident Commander and provided to the TSB, as soon as practicable following the discovery of an incident and should set out, to the extent that the information is available:</p> <ul style="list-style-type: none"> (1) the area affected, the substance involved and an estimate of the volume released, and the nature, location, date, and time of the incident; (2) the name and occupation of every person killed as the result of the incident; (3) the name, occupation, condition and current location of every person that sustained a serious injury; (4) a description of any interruption or reduction in service

CANADA FEDERAL

**FIGURE 2.9 (cont'd)
EXTERNAL NOTIFICATION REFERENCE**

CANADA FEDERAL

FEDERAL NOTIFICATIONS – QUEBEC		
REQUIRED EXTERNAL NOTIFICATIONS		
AGENCY	TELEPHONE NUMBER	REPORTING REQUIREMENTS (IF ANY)
CER (continued)		<p>resulting from the incident;</p> <p>(5) a description of the actions taken by the company to protect the public and the environment;</p> <p>(6) a description of the repairs made or to be made by the company and the anticipated date of return to service of the pipeline;</p> <p>(7) the availability of the damaged parts of the pipeline;</p> <p>(8) the nature and extent of any adverse environmental effects;</p> <p>(9) the nature and extent of any concerns expressed to the company by the public related to the incident;</p> <p>(10) a descriptive assessment of any continuing hazards resulting from or related to the incident;</p> <p>(11) other significant facts that are known to be relevant to the cause of the incident, and;</p> <p>(12) a list of the witness who notified the company, along with their addresses and telephone numbers.</p> <p>Detailed Incident report A detailed incident report should be prepared by the Incident Commander and provided to the TSB, as soon as detailed information is available and should include:</p> <p>(1) a detailed description of the adverse environmental effects of the incident on terrain, property, livestock, fish, wildlife and habitat of fish and wildlife;</p> <p>(2) a description and evaluation of the clean-up and disposal methods used or proposed to be used;</p> <p>(3) a description of all measures taken or proposed to be taken to restore the terrain where the incident occurred;</p> <p>(4) a description of the monitoring undertaken or proposed to be undertaken to determine the success of restoration measures;</p> <p>(5) where the incident involved a spillage of LVP hydrocarbons, liquid test medium or any toxic substance, an outline of the program that the company proposes to follow to rehabilitate the affected area;</p> <p>(6) a description, sketch or photograph of the area affected by any fluids that escaped from the pipeline as a result of the incident;</p> <p>(7) a detailed description of the incident including the events leading up to and following the incident;</p> <p>(8) comments, sketches, drawings or photographs relevant to the incident that are necessary for a complete understanding of the incident; and</p> <p>(9) corrective actions to be taken to prevent similar incidents from occurring in the future.</p>
Environment and Climate Change Canada	514-283-2333 Environmental Protection Service	Any environmental incident: spill of hazardous or petroleum products, fumes, unusual odours, noise, vapour, etc.

FEDERAL NOTIFICATIONS – QUEBEC		
REQUIRED EXTERNAL NOTIFICATIONS		
AGENCY	TELEPHONE NUMBER	REPORTING REQUIREMENTS (IF ANY)
Port of Montreal	514-283-7022	Any spill to St. Lawrence River.
RECOMMENDED EXTERNAL NOTIFICATIONS		
AGENCY		CONTACT INFORMATION
Fisheries and Oceans – Canadian Coast Guard		418-648-2544
Canadian Wildlife Service		800-363-4735 Emergencies (24 hour)
Park Canada (navigational lock)		450-447-4805

CANADA FEDERAL

**FIGURE 2.10
EXTERNAL NOTIFICATION REFERENCE**

STATE SPECIFIC NOTIFICATIONS

Notifications for each state or province are detailed on the following pages in the following order: 1) Required Notifications; 2) Non-Required Notifications; 3) Local Emergency Services; 4) Neighboring Community, Utility, and Industry.

REQUIRED NOTIFICATIONS

MAINE

AGENCY	TELEPHONE NUMBER	REPORTING REQUIREMENTS (IF ANY)
Maine Department of Environmental Protection	<p>Oil Spills (800) 482-0777* (In or Out of State calls)</p> <p>Hazardous Materials (800) 452-4664* (In or Out of State calls)</p>	<p>TYPE: All spills of oil or hazardous substance or hazardous waste.</p> <p>VERBAL: Immediate notification required (Maximum 2 hours).</p> <p>WRITTEN: 10 days for Hazardous Material and Oil Spill releases. Once removal of the discharge has been completed, the person, firm or corporation responsible for the discharge shall prepare a complete written report of the occurrence and submit that report to the Commissioner within 10 days. Written report is sent to Canco Road office to the attention of the field response person who responded or fielded our telephone call to make the report. The State reporting form is located in Appendix K.</p> <p align="right">Maine Department of Environmental Protection 312 Canco Road Portland, ME 04103</p>

*24-Hour Number

**FIGURE 2.10 (Cont'd)
EXTERNAL NOTIFICATION REFERENCE**

ASSISTANCE/ADVISORY NOTIFICATIONS (outside resources)		
NOTIFY AS NEEDED		
MAINE		
AGENCY	LOCATION	OFFICE/ ALTERNATE
U.S. Environmental Protection Agency (EPA) - Region I	Boston, MA	(617) 223-7265 (617) 723-8928* (800) 424-8802* (857) 383-8450*
U.S. Coast Guard - Marine Safety Office (USCG - COTP) (USCG-SNNE)	South Portland, ME South Portland, ME	(207) 767-0320 (833)-449-2407*
U.S. Fish and Wildlife Service (USFWS)	East Orland, ME	(207) 902-1566
Oxford County Emergency Management Agency (LEPC) (b) (6)	South Paris, ME	(207) 743-6336
Maine DEP - Southern Maine	Portland, ME	(207) 822-6300 (888) 769-1036
National Weather Service (Recorded Forecasts)	Gray, ME	(207) 688-3216
NOAA Hazardous Materials Response and Assessment Dir.	Boston, MA	(206) 526-6317*
U.S. Department of Interior (b) (6)	Boston, MA	(617) 223-8565 (617) 925-2767*
Department of Conservation Bureau of Public Lands (b) (6)	Augusta, ME	(207) 287-3061
Department of Inland Fish & Wildlife (b) (6)	Bangor, ME	(207) 941-4467 (207) 941-4448
Department of Marine Services (b) (6)	Hallowell, ME	(207) 633-9507 (207) 624-6550
Maine State Emergency Response Commission (SERC) (b) (6)	Augusta, ME	(207) 626-4503
Maine Emergency Management Agency (MEMA) (b) (6)	Augusta, ME	(800) 452-8735 (207) 624-4400
Cumberland County - Emergency Management Agency (LEPC)	Windham, ME	(207) 892-6785 (207) 623-3614* (Sheriff)
South Portland Conservation Commission	South Portland, ME	(207) 767-3201
Westbrook Conservation Commission	Westbrook, ME	(207) 854-0676
Windham Natural Resource Committee	Windham, ME	(207) 892-1905
Bethel Conservation Committee	Bethel, ME	(207) 824-2669

*24-Hour Number

MAINE

**FIGURE 2.10 (Cont'd)
EXTERNAL NOTIFICATION REFERENCE**

ASSISTANCE/ADVISORY NOTIFICATIONS (outside resources)		
NOTIFY AS NEEDED		
MAINE		
AGENCY	LOCATION	OFFICE/ ALTERNATE
Department of Environmental Protection (b) (6) Un-booming During Transfer	Augusta, ME Portland, ME Portland, ME	(207) 816-0133 (207) 822-6300 (207) 822-6300 (207) 879-6369
Governor's Office	Augusta, ME	(207) 287-3531
Maine Bureau of Waterways	Portland, ME	(207) 773-5608
Maine Historic Preservation Commission (b) (6)	Augusta, ME	(207) 287-2132
Maine State Police	Augusta, ME	(800) 452-4664
Maine Dig Safe		(888) DIG-SAFE 811
LOCAL EMERGENCY SERVICES		
NOTIFY AS NEEDED		
MAINE		
SERVICE	LOCATION	OFFICE/ ALTERNATE
CUMBERLAND COUNTY		
Cumberland County Emergency Director	Portland, ME	(207) 892-6785
Portland Water District (24 hr)	Portland, ME	(207) 761-8300
South Portland Wastewater Treatment Plant	South Portland, ME	(207) 767-7675
Portland Wastewater Treatment Plant	Portland, ME	(207) 761-5424
Municipal Fire Departments		
South Portland (Hazardous Materials & Hazardous Waste spill mutual aid)	----	911 (207)-874-8576*
Portland	----	(207) 874-8576*
Westbrook	----	(207)-854-0644* (207) 854-2531
Windham	----	(207) 893-2810* (207) 892-2525
Raymond	----	(207) 893-2810* (207) 655-7851

MAINE

Casco	----	(207) 893-2810* (207) 627-6958
Naples	----	(207) 893-2810* (207) 693-6850
Otisfield	----	(207) 743-9554* (207) 539-4619
Harrison	----	(207) 893-2810* (207) 583-6011
Fire Wardens		
MP 10-21 Brent Libby, Fire Chief	Windham, ME	(207) 892-1911
MP 21-26 Bruce Tupper, Fire Chief	Raymond, ME	(207) 655-1187
MP 26-32 Jason Moen, Fire Chief	Casco, ME	(207) 693-6850
MP 32-40 Kyle Jordan, Fire Chief	Otisfield, ME	(207) 539-4619
MP 40-43 Dana Laplante, Fire Chief	Harrison, ME	(207) 583-6011



**FIGURE 2.10 (Cont'd)
EXTERNAL NOTIFICATION REFERENCE**

LOCAL EMERGENCY SERVICES		
NOTIFY AS NEEDED		
MAINE		
SERVICE	LOCATION	OFFICE/ ALTERNATE
CUMBERLAND COUNTY		
Law Enforcement Agencies		
Maine State Police	Gray, ME	(800) 482-0730
Maine State Police	Augusta, ME	(800) 452-4664
Cumberland County Sheriff	----	(800) 501-1111 non-emergency (207) 774-1444 emergency
Local Police Departments		
South Portland	----	911 (207) 799-5511
Portland	----	(207) 874-8875
Westbrook	----	(207) 854-2531
Windham	----	(207) 892-2525
Harrison		(800) 501-1111 – Uses Cumberland County
Central Maine Partners in Health		
Central Maine Partners in Health	South Portland, ME	207-741-0220
Hospitals		
Maine Medical Center	Portland, ME	(207) 871-2381
Mercy Hospital	Portland, ME	(207) 879-3266
OXFORD COUNTY		
Municipal Fire Departments		
		(207) 743-9554*
Norway	----	(207) 743-2424
Waterford	----	(207) 583-2410
Bethel	----	(800) 733-1421 (207) 824-2665
Newry	----	(207) 824-4905
Gilead	----	(207) 836-2079
Rumford	----	(207) 364-2901

**FIGURE 2.10 (Cont'd)
EXTERNAL NOTIFICATION REFERENCE**

LOCAL EMERGENCY SERVICES		
NOTIFY AS NEEDED		
MAINE		
SERVICE	LOCATION	OFFICE/ ALTERNATE
Law Enforcement Agencies		
Norway Police Department	Norway, ME	(207) 743-8934
Bethel Police Department	Bethel, ME	911 emergency or (800) 733-1421 non-emergency
Rumford Police Department	Rumford, ME	(207) 364-4551
Hospital		
Stephens Memorial Hospital	Norway, ME	(207) 743-5933



**FIGURE 2.10 (Cont'd)
EXTERNAL NOTIFICATION REFERENCE**

NEIGHBORING COMMUNITY, UTILITY AND INDUSTRY				
NOTIFY AS NEEDED				
INDUSTRY OR COMMUNITY				
MILE POST (MP)	WATER COURSE	INDUSTRY OR COMMUNITY	LOCATION	OFFICE/ ALTERNATE
----	Portland Harbor	Central Maine Power*	Portland, ME	(207) 622-7421 (207) 622-7671
		MSRC	Portland, ME	(207) 780-8801
		Irving/Buckeye	South Portland, ME	(207) 761-0501
		Global	South Portland, ME	(207) 767-8259
		Sprague Energy	South Portland, ME	(207) 799-4899
		Citgo Enterprises	South Portland, ME	(207) 799-3394
		5 to 29	Presumpscot River	Portland Water District
	Pleasant River	Central Maine Power*	Portland, ME	(207) 622-7421 (207) 622-7671
		S.D. Warren Co.	Westbrook, ME	(207) 856-4000
		Cumberland Co.	Portland, ME	(207) 774-1444 (Sheriff)
		29 to 60	Parker Pond	Casco Village
	Crooked River	Hancock Lumber Co.	Casco, ME	(207) 627-4201
		Portland Water District	Portland, ME	(207) 761-8310
		Papoose Pond Campground	N. Waterford, ME	(207) 583-4470
60	Androscoggin R.	St. Lawrence & Atlantic R.R.	Auburn, ME	(207) 782-5680
0-60	Various	Portland Natural Gas Transmission	Westbrook, ME to Gorham, NH	(888) 576-4634

MAINE

When oil enters a water course to the extent that it may endanger a water supply or create a fire hazard to a community or industry, persons concerned must be promptly notified. This list is intended to serve as a check list and should be amended to include all other concerned persons in each section of which the supervisor has knowledge.

*Note: Contact Central Maine Power for any issue involving electric power transmission lines and facilities in Maine

**FIGURE 2.11
EXTERNAL NOTIFICATION REFERENCE**

REQUIRED NOTIFICATIONS		
NEW HAMPSHIRE		
AGENCY	TELEPHONE NUMBER	REPORTING REQUIREMENTS (IF ANY)
New Hampshire Department of Environmental Services	(603) 271-3899 (8 a.m. - 4 p.m.) (603) 223-4381 (nights, weekends, holidays)	TYPE: All spills of oil and hazardous substances or wastes. VERBAL: Immediate notification required. WRITTEN: This must be done within 15 days of the incident.
New Hampshire State Police Dispatch	(603) 223-4381	New Hampshire Department of Environmental Services Attn: Special Investigations Section 6 Hazen Drive Concord, NH 03301
Nearest Fire Department	(See Local Emergency Contacts)	TYPE: A condition in which a fire or safety hazard exists. VERBAL: Immediate notification required.

NEW HAMPSHIRE

*24-Hour Number

**FIGURE 2.11 (cont'd)
EXTERNAL NOTIFICATION REFERENCE**

NEW HAMPSHIRE

ASSISTANCE/ADVISORY NOTIFICATIONS (outside resources)		
NOTIFY AS NEEDED		
NEW HAMPSHIRE		
AGENCY	LOCATION	OFFICE/ ALTERNATE
U.S. Department of Agriculture – Forest Service District Ranger (Any leak or spill in the White Mountains between mile 87 and 91).		(603) 466-2713 (603) 528-8721 (During Office Hours)
U.S. Environmental Protection Agency (EPA) – Region I	Boston, MA	(617) 223-7265 (617) 723-8928* (800) 424-8802* (857) 383-8450*
U.S. Fish and Wildlife Service (USFWS)	Chelsea, MA	(617) 889-6616
U.S. Coast Guard – Sector Northern New England (USCG – COTP) (USCG – MSO)	South Portland, ME South Portland, ME	(207) 767-0320 (833)-449-2407*
National Weather Service (Recorded Forecasts)	Gray, ME	(207) 688-3210
New Hampshire Fish & Game Department	Concord, NH	(603) 271-2462
NOAA Hazardous Materials Response and Assessment Director	Boston, MA	(206) 526- 6317*
New Hampshire Emergency Management (SERC)	Concord, NH	(800) 852-3792 (603) 271-2231
Lancaster LEPC	Lancaster, NH	(603) 788-3391
Jefferson LEPC (b) (6)	Jefferson, NH	(603) 586-4436
Randolph LEPC (b) (6)	Randolph, NH	(603) 466-5771
Shelburne Natural Resources and Conservation Committee	Shelburne, NH	(603) 466-2262
Lancaster Conservation Committee	Lancaster, NH	(978) 368-4007

*24-Hour Number

FIGURE 2.11 (Cont'd)

EXTERNAL NOTIFICATION REFERENCE

LOCAL EMERGENCY SERVICES		
NOTIFY AS NEEDED		
NEW HAMPSHIRE		
SERVICE	LOCATION	OFFICE/ ALTERNATE
COOS COUNTY		
Municipal Fire Departments		
Shelburne	----	(603) 466-3345
Gorham	----	(603) 466-3336
Randolph	----	(603) 466-3336
Jefferson	----	(603) 586-4444 (603)788-3232*
Lancaster	----	(603) 788-4830 (603) 788-3232*
Guildhall (Part of Lunenburg)	----	(603) 788-4466
Lunenburg	----	(603) 788-4466
Sutton	----	(802) 748-5050
Burke	----	(802) 748-5050
Fire Wardens		
(b) (6)		
Law Enforcement Agencies		
New Hampshire State Police	Concord, NH	(603) 271-3636
Twin Mountain State Police Barracks	Twin Mountain, NH	(603) 846-3333
State Highway Commission	Lancaster, NH	(603) 846-3333 (603) 788-4641
County Sheriff (Brian Valerino)	Lancaster, NH	(603) 788-5598
Shelburne Police Department	Shelburne, NH	(603) 466-3345
Gorham Police Department	Gorham, NH	(603) 466-3336
Randolph Police Department	Randolph, NH	(603) 466-3336
Jefferson Police Department	Jefferson, NH	(603) 846-5517
Lancaster Police Department	Lancaster, NH	(603) 788-4402
Health Officers		
Weeks Medical	Lancaster, NH	(603) 788-2521

NEW HAMPSHIRE

**FIGURE 2.11 (Cont'd)
EXTERNAL NOTIFICATION REFERENCE**

NEW HAMPSHIRE

LOCAL EMERGENCY SERVICES

NOTIFY AS NEEDED

NEW HAMPSHIRE

SERVICE	LOCATION	OFFICE/ ALTERNATE
COOS COUNTY (Cont'd)		
Doctors		
Gorham Medical Center Family Health Services	Gorham, NH	(603) 466-2741
Weeks Medical Center	Lancaster, NH	(603) 788-2521
Hospitals		
Androscoggin Valley Hospital	Berlin, NH	(603) 752-2200
Weeks Memorial Hospital	Lancaster, NH	(603) 788-4911
Ambulance		
Gorham Ambulance Service	Gorham, NH	(603) 466-3336

NEIGHBORING COMMUNITY, UTILITY, AND INDUSTRY

NOTIFY AS NEEDED

INDUSTRY OR COMMUNITY

MILE POST (MP)	WATER COURSE	INDUSTRY OR COMMUNITY	LOCATION	OFFICE/ ALTERNATE
60 to 90	Peabody River	NH and VT R.R.	Whitefield, NH	(603) 837-3055
		Public Serv. Co. of N.H.	Berlin, NH	(800) 662-7764
		Gorham, N.H. Town Office	Gorham, NH	(603) 466-2744
		Gorham Paper and Tissue	Gorham, NH	(603) 342-2000
90 to 113	Connecticut River	Chadbourne Tree Farm and Hancock Lumber	Bethel, ME	(207) 824-2166
		Mead Paper	Rumford, ME	(207) 364-4521
		NH and VT R.R.	Whitefield, NH	(603) 837-3055
		Public Service of N.H.	Berlin, NH	(800) 662-7764
		Maine Central R.R.	Portland, ME	(800) 955-9217 (207) 848-9851* (207) 848-4315*
		Lancaster Town Office	Lancaster, NH	(603) 788-3391
		TransCanada-Moore Station	Littleton, NH	(603) 991-2668* (603) 348-3710*

When oil enters a water course to the extent that it may endanger a water supply or create a fire hazard to a community or industry, persons concerned must be promptly notified. This list is intended to serve as a check list and should be amended to include all other concerned persons in each section of which the supervisor has knowledge. Note: Contact Public Service of New Hampshire for any issue involving electric power transmission lines and facilities in New Hampshire

**FIGURE 2.11 (Cont'd)
EXTERNAL NOTIFICATION REFERENCE**

REQUIRED NOTIFICATIONS		
VERMONT		
AGENCY	TELEPHONE NUMBER	REPORTING REQUIREMENTS (IF ANY)
Agency of Natural Resources – Department of Environmental Conservation (Waste Mgmt. 8 am – 4 pm) (Emergency Mgmt/State Police) (Hazardous Materials Hotline)	800-641-5005*	TYPE: - All spills that pose a threat to human health or the environment. - A spill of 2 gallons or more VERBAL: Immediate notification required. WRITTEN: Within 10 days for any reportable spill. Vermont Department of Environmental Conservation Agency of Natural Resources 103 South Main Street West Building Waterbury, VT 05671-0404
Vermont Department of Public Service	(802) 828-2811	TYPE: All fires, leaks, or blowouts. VERBAL: Immediate notification required. WRITTEN: As requested by the agency.
National Response Center	1-800-424-8802	TYPE: Any spill that impacts (or threatens) surface water (e.g. lakes, streams, wetlands) VERBAL: Immediate notification required

ASSISTANCE/ADVISORY NOTIFICATIONS (outside resources)

NOTIFY AS NEEDED

VERMONT

AGENCY	LOCATION	OFFICE/ ALTERNATE
U.S. Environmental Protection Agency (EPA) – Region I	Boston, MA	(617) 223-7265 (617) 723-8928* (800) 424-8802* (857) 383-8450*
U.S. Coast Guard – Sector Northern New England (USCG – COTP) (USCG – MSO)	South Portland, ME South Portland, ME	(207) 767-0320 (833)-449-2407*
U.S. Fish and Wildlife Service (USFWS)	Chelsea, MA	(617) 889-6616
National Weather Service (Recorded Forecasts)	Gray, ME	(207) 688-3210
Department of Fish and Wildlife Commission	Waterbury, VT	(812) 241-3700
NOAA Hazardous Materials Response and Assessment Director	Boston, MA	(206) 526- 6317*
Agency of Natural Resources Dept. of Environmental Conservation (b) (6)	Waterbury, VT	(800) 347-0488 (802) 244-8721
LEPC #9 (b) (6)	St. Johnsbury, VT	(802) 748-2576
LEPC #10 x/o Newport City PD (b) (6)	Newport, VT	(802) 334-6733
Sutton Conservation Committee	Sutton, VT	(603) 927-4416

VERMONT

**Figure 2.12 (Cont'd)
EXTERNAL NOTIFICATION REFERENCE**

VERMONT

LOCAL EMERGENCY SERVICES		
NOTIFY AS NEEDED		
VERMONT		
SERVICE	LOCATION	OFFICE/ ALTERNATE
STATEWIDE		
Emergency Hazardous Materials Spill Reporting 7:45 AM – 4:30 PM Weekends		1-800-641-5005* (802) 241-3888
State Police Headquarters	Waterbury, VT	(802) 244-7345
To report an emergency in Vermont contact the appropriate Vermont State Police Barracks		
ESSEX COUNTY (GUIDHALL, LUNENBURG, VICTORY)		
Vermont State Police- St. Johnsbury Barracks	St. Johnsbury, VT	(802) 748-3111*
Essex County Sheriff	Guildhall, VT	(802) 676-3500
CALEDONIA COUNTY (BURKE, SUTTON)		
Vermont State Police- St. Johnsbury Barracks	St. Johnsbury, VT	(802) 748-3111*
Caledonia County Sheriff	St. Johnsbury, VT	(802) 748-6666
St. Johnsbury Fire Department (Report all fire emergencies in Caledonia County)	St. Johnsbury, VT	(802) 748-8925* (802) 748-2372
Fire Wardens		
- Brian Greer	East Burke, VT	(802) 626-5484
- Norbert Patoine	Sutton, VT	(802) 467-3995
ORLEANS COUNTY (BARTON, IRASBURG, NEWPORT, TROY, JAY)		
Vermont State Police- Derby Barracks	Derby, VT	(802) 334-5829*
Orleans County Sheriff	Derby, VT	(802) 334-3333
Local Police Departments		
St. Johnsbury	----	(802) 748-2314
Barton	----	(802) 334-8881
Newport	----	(802) 334-6733
Law Enforcement Agencies		
Vermont State Police- Derby Barracks	Derby, VT	(802) 334-5829

***24-Hour Number**

**FIGURE 2.12 (Cont'd)
EXTERNAL NOTIFICATION REFERENCE**

LOCAL EMERGENCY SERVICES		
NOTIFY AS NEEDED		
VERMONT		
SERVICE	LOCATION	OFFICE/ ALTERNATE
ORLEANS COUNTY		
Hospitals		
Northeastern Vt. Regional Hospital	St. Johnsbury, VT	(802) 748-8141
North County Hospital	Newport, VT	(802) 334-7900
Ambulance		
Northeastern Vt. Regional Hospital	St. Johnsbury, VT	(802) 748-8141
Newport Ambulance	Newport, VT	(802) 334-2023
Fire Wardens		
(b) (6)		

VERMONT

**FIGURE 2.12 (Cont'd)
EXTERNAL NOTIFICATION REFERENCE**

NEIGHBORING COMMUNITY, UTILITY, AND INDUSTRY				
NOTIFY AS NEEDED				
INDUSTRY OR COMMUNITY				
MILE POST (MP)	WATER COURSE	INDUSTRY OR COMMUNITY	LOCATION	OFFICE/ ALTERNATE
		Lunenburg Town Office	Lunenburg, VT	(802) 892-5959
113 – 123	Moose River	Maine Central Railroad	Portland, ME	(800) 955-9217 (800) 248-2861 (Customer Service) (207) 848-9851* (207) 845-4315*
		St. Johnsbury Town Office	St. Johnsbury, VT	(802) 748-3926
123 – 127	Passumpsic River	East Burke Garage	Lyndonville, VT	(802) 626-5484
	East Branch	Lyndonville Village Office	Lyndon, VT	(802) 626-5785
		Lyndonville Power Co. (8 am – 4 pm)	Lyndon, VT	(802) 626-3638 (802) 626-9252
		Northern Vermont R.R. Yard Office Roadmaster	Newport, VT	(802) 334-8435 (800) 955-9208 (Railroad Ops) (802) 334-6540
		Vermont Electric Cooperative	Johnson, VT	(802) 730-1134*

VERMONT

*24-hour number

When oil enters a water course to the extent that it may endanger a water supply or create a fire hazard to a community or industry, persons concerned must be promptly notified. This list is intended to serve as a check list and should be amended to include all other concerned persons in each section of which the supervisor has knowledge.

Note: Contact Vermont Electric Cooperative for any issue involving electric transmission lines and facilities in Vermont.

**FIGURE 2.13
EXTERNAL NOTIFICATION REFERENCE**

REQUIRED NOTIFICATIONS		
QUEBEC		
AGENCY	TELEPHONE NUMBER	REPORTING REQUIREMENTS (IF ANY)
Ministère de l'Environnement et de la Lutte contre les changements climatiques (MELCC)	866-694-5454 Environmental Emergencies (24 hour) all regions	Any environmental incident: spill of hazardous or petroleum products, fumes, unusual odours, noise, vapour, etc. Spill with possible impacts on a stream or land spills, any spill of any contaminant, from the established list of contaminants, released in the environment, or susceptible of harm to life, health, security, well-being or comfort of a person, contaminant which may damage or deteriorate soil quality, vegetation, fauna or property.
Etrie Regional Office	819-820-3882	
Montréal Regional Office	450-928-7607	
Montreal and Lanaudière Regional Office	514-873-3636	
ASSISTANCE/ADVISORY NOTIFICATIONS (outside resources)		
NOTIFY AS NEEDED		
QUEBEC		
AGENCY	LOCATION	OFFICE/ ALTERNATE
MRC Regional Municipal Authority		
	Brôme-Missisquoi	450-266-4900
	Memphrémagog	819-843-9292
	Lajemmerais (Boucherville, Varennes, Vercheres)	450-583-3301
	Rouville	450-460-2127
	Haut-Richelieu	450-346-3636
	Vallée Richelieu	450-464-0339
SPVM #49	Montreal-Est	514-280-0149
Police Richelieu St-Laurent	Ste-Julie, St-Mathias, St. Basile-le-Grand	450-922-7001
Service Police Longueuil	Longueuil	450-463-7011
RCMP	Dorchester	1-800-771-5401
Quebec Road Department		
	Main Number	450-589-5651
	Eastern Townships	819-820-3280
	Montréal	450-347-2301
	Boucherville	450-655-1317
CANUTEC		613-996-6666

QUEBEC

*See Montreal Pipe Line Right of Way Book for individual parcel landowners list

**FIGURE 2.13 (Cont'd)
EXTERNAL NOTIFICATION REFERENCE**

ASSISTANCE/ADVISORY NOTIFICATIONS (outside resources)

NOTIFY AS NEEDED		
AMBULANCE SERVICES		
Highwater Area – Missisquoi River Area	Ambulance Cowansville inc.	800-361-3010 450-263-2444
	Ambulance de l'Estrie (Eastman)	800-567-6090
	Berkshire Ambulance	802-933-4300
	Enosburg Ambulance	802-933-4000
	Highgate Ambulance	802-868-3320
	Richford Ambulance	802-848-7700
	Sheldon Ambulance	802-933-4000
	Swanton Ambulance	802-868-3320
Saint-Césaire Area	Ambulance Marieville	800-363-1916
FIRST RESPONDERS		
Provincial Police	Estrie	819 564-1212
	Montréal	514-310-4141
	Montréal	450-641-2128
Vermont Police Headquarters	Headquarters	802-244-8727
	Troop A (St. Albans, Vermont)	802-524-5993
		802-933-5555
	Troop B (Derby, Vermont)	802-334-8881
	(St. Johnsbury, Vermont)	802-748-3111

QUEBEC

**FIGURE 2.13 (Cont'd)
EXTERNAL NOTIFICATION REFERENCE**

ASSISTANCE/ADVISORY NOTIFICATIONS (outside resources)		
NOTIFY AS NEEDED		
Health Services		
Highwater Area		
Medical Doctor	Bedford Medical Centre	450-248-3336
	Cowansville Medical Centre	450-263-0774
Hospital	Brome Missisquoi-Perkins-Cowansville	450-266-4342
	North Country Hospital, Newport, Vt.	802-334-7331
	Northwest Medical Centre, St.Albans, VT	802-524-1037 (24 hour)
CLSC	C.L.S.C. Mansonville	450-292-3376
Saint-Césaire Area		
Medical Doctor	Robinson Medical Centre, Granby	450-378-8435
Hospital	Centre santé et services sociaux de la Haute Yamaska	450-372-5491
Richelieu River Area		
Hospitals	Charles LeMoyne Hospital, Greenfield Park	450-466-5000
	Public Health	514-466-5655
	Hôtel-Dieu Hospital, Sorel	450-746-6000
Montreal Area		
Medisys	Groupe santé Medisys	514 845-1211
Hospital	Centre Hospitalier de l'Université de Montréal (CHUM), Montréal	514-890-8000
	Maisonnette-Rosemont Hospital	514-252-3400
	Pierre Boucher Hôpital Longueuil	450-468-8111

QUEBEC

**FIGURE 2.13 (Cont'd)
EXTERNAL NOTIFICATION REFERENCE**

NEIGHBORING COMMUNITY, UTILITY AND INDUSTRY			
NOTIFY AS NEEDED			
INDUSTRY OR COMMUNITY			
Municipalities	Town Hall	Fire Dept.	Local Police
Ange-Gardien	819-986-7470	911	911
Beloeil	450-467-2835	450-536-3333	
Boucherville	450 463-7027	911 450-463-7038 (if outside the city limits)	911 450-463-7028 (if outside the city limits)
Brigham	450-263-5942	911	911
Cowansville	450-263-0141	911	911
Dunham	450-295-2418	911	911
Glen Sutton	450-538-2290	911	911
Highwater/Potton	450-292-3313	911	911
Marieville	450-460-4444	911	911
McMasterville	450-467-3580	911	
Montreal	514-872-1111	911	
Montreal-East	514-645-7431	911 514-280-7808 outside city	911 514-280-2255 outside city
Mont-Saint-Hilaire	450-467-2854	911	
Otterburn Park	450-536-0303	911	
Potton	450-292-3313	911	911
Repentigny	450-470-3000	911	911 450-470-3600 (outside city)
Saint-Antoine-sur-Richelieu	450-584-2258	911	911
Saint-Basile-le-Grand	450-461-8000	911	911
Saint-Bruno-de-Montarville	450-653-2443	911	911
Saint-Césaire (suburbs)	450-469-3108	911	911
Saint-Césaire (city/suburbs)	450-469-3108	911	911
Saint-Charles-sur-le-Richelieu	450-584-3484	911	911
Saint-Denis-sur-Richelieu	450-787-2092	911	911
Saint-Marc-sur-Richelieu	450-787-3497	911	911
Saint-Mathias	450-658-2841	911	911
Saint-Roch-de-Richelieu	450-785-2755	911	911
Saint-Ours	450-785-2203	911	911
Saint-Sulpice	450-589-4450	911	
Sainte-Angèle-de-Monnoir	450-460-7838	911	911
Sainte-Brigitte-d'Iberville	450-293-7511	911	911
Sainte-Julie	450-922-7111	911	911

QUEBEC

**FIGURE 2.13 (Cont'd)
EXTERNAL NOTIFICATION REFERENCE**

NEIGHBORING COMMUNITY, UTILITY AND INDUSTRY (cont'd)			
NOTIFY AS NEEDED			
INDUSTRY OR COMMUNITY			
Municipalities	Town Hall	Fire Dept.	Local Police
Sorel/Tracy	450-780-5600	911	
Sutton Township & Town	450-538-2290	911	911
Varenes	450-652-9888	911	911
Verchères	450-583-3307	911	

LOCAL NOTIFICATIONS – QUEBEC		
REQUIRED EXTERNAL NOTIFICATIONS		
AGENCY	TELEPHONE NUMBER	REPORTING REQUIREMENTS (IF ANY)
Local Fire Department	Figure 2.13	Spill or fumes with risks of fire or explosion
Municipal or Provincial Police	Figure 2.13	Incident with impacts on public safety (ex. spills/fire)
Municipality involved	Figure 2.13	Spill or fumes with risks of fire or explosion Incident with impacts on public safety Incident with major consequences on the surrounding population

***Note: Contact Hydro-Quebec for any issue involving electric power transmission lines and facilities in Quebec**

QUEBEC

FIGURE 2.14

EXTERNAL NOTIFICATION REFERENCE

RESOURCES US

CONTRACTORS / SERVICES (ALL US RESPONSE ZONES)		
USCG CLASSIFIED OIL SPILL REMOVAL ORGANIZATIONS (OSRO)		
COMPANY	LOCATION	OFFICE / ALTERNATE
Clean Harbors of Maine, Inc. 17 Main Street South Portland, ME 04106	South Portland, ME	(207) 799-8111* 1-800-645-8265*
MSRC Region 1 Center 120 Fieldcrest Avenue Edison, NJ 08837	Edison, NJ	(800) 259-6772* (800) 645-7745* (732) 417-0175* (732) 346-2450 (Office)
MSRC Portland Preposition Site	Portland, ME	(207) 780-8801

***24-Hour Number**

**FIGURE 2.14 (Cont'd)
EXTERNAL NOTIFICATION REFERENCE**

RESOURCES US

CONTRACTORS / SERVICES													
ADDITIONAL RESPONSE RESOURCE													
<p>The following resources are listed by category. The categories are as follows:</p> <table border="0"> <tr> <td>Aviation</td> <td>Contractors & Equipment</td> </tr> <tr> <td>Firefighters</td> <td>Hazardous Substances Sampling</td> </tr> <tr> <td>Hazardous Waste Transporter</td> <td>Spill Response Contractors</td> </tr> <tr> <td>Security</td> <td>Wildlife Rescue and Rehabilitation</td> </tr> <tr> <td>Storage and Disposal</td> <td></td> </tr> </table> <p>This list is not separated geographically; rather it is a general list of contractors/experts with the potential to respond to spills anywhere on the system.</p> <p>Additional Resources at each of the pump station locations are also listed at the end of this general resource list.</p>				Aviation	Contractors & Equipment	Firefighters	Hazardous Substances Sampling	Hazardous Waste Transporter	Spill Response Contractors	Security	Wildlife Rescue and Rehabilitation	Storage and Disposal	
Aviation	Contractors & Equipment												
Firefighters	Hazardous Substances Sampling												
Hazardous Waste Transporter	Spill Response Contractors												
Security	Wildlife Rescue and Rehabilitation												
Storage and Disposal													
US ADDITIONAL RESPONSE RESOURCES													
SERVICE	LOCATION	COMPANY	OFFICE/ ALTERNATE										
Aviation	Newport, Vermont	Lakeview Aviation (Fixed Wing Aircraft)	(802) 334-5001 (802) 673-8935*										
Firefighters		Williams Fire & Hazard Control (Commercial Firefighters)	(409) 727-2347* (Answering Service) (281) 999-0276 (409) 745-3232										
Firefighters	Houston, TX	Red Adair (Commercial Firefighters)	(713) 589-5500										
Firefighters	Lionville, PA	Kidder Firefighting (Firefighting Foam)	(610) 363-1400 (24 Hr.)										
Firefighters	St. Paul, MN	3 M Company (Firefighting Foam)	(651) 733-1110 (24 Hr.)										
Hazardous Substances Sampling	Portsmouth, NH	Analytic Labs	(603) 436-5111										
Hazardous Substances Sampling	Presque Isle	Aroostook Testing	(207) 762-5771										
Hazardous Substances Sampling	Westbrook	Katahdin Analytical Services Inc.	(207) 874-2400										
Hazardous Substances Sampling	Salem, MA	New England Chrom.	(978) 744-6600										
Hazardous Substances Sampling	Waterville	Northeast Laboratory	(207) 873-7711										

***24-Hour Number**

**FIGURE 2.14 (Cont'd)
EXTERNAL NOTIFICATION REFERENCE**

RESOURCES US	CONTRACTORS / SERVICES			
	US ADDITIONAL RESPONSE RESOURCE			
	SERVICE	LOCATION	COMPANY	OFFICE/ ALTERNATE
Hazardous Substances Sampling	Augusta, ME	State Public Health Lab	(207) 287-2727	
Hazardous Waste Transporter	Augusta, ME	Board of Pesticide Control Maine Department of Agriculture	(207) 287-2731	
Hazardous Waste Transporter	Augusta, ME	Central Maine Power Co.	(207) 623-3521	
Hazardous Waste Transporter	S. Portland, ME	Clean Harbors Environmental Services	(207) 799-8111 or (207) 772-2201	
Hazardous Waste Transporter	Stoughton, MA	Tradebe	1-800-388-7242	
Hazardous Waste Transporter	Scarborough, ME	C. M. Laboratories	(207) 883-8395	
Hazardous Waste Transporter	Lewiston, ME	Diamond Phoenix	(207) 784-1381	
Hazardous Waste Transporter	Houlton, ME	Houlton Water Co.	(207) 532-2259	
Hazardous Waste Transporter	Bangor, ME	Maine Department of Transportation	(207) 941-4500	
Hazardous Waste Transporter	Leeds, ME	Safety-Kleen Corp.	(207) 933-4496	
Hazardous Waste Transporter	Newington, NH	United Oil Recovery	(603) 431-2420	
Security	St. Johnsbury, VT	Caledonia County Sheriff	(802) 748-6666	
Security	St. Johnsbury, VT	Vermont State Police	(802) 748-3111	
Security	South Portland, ME	South Portland Police	(207) 799-5511	
Security	Gray, ME	Maine State Police	(207) 482-0730	
Security	Portland, ME	Publicover Security	(207) 773-3736	
Security	Portland, ME	Cumberland County Sheriff	(207) 892-2674	
Security	South Paris, ME	Oxford County Sheriff	(207) 743-9554	
Security	Lancaster, NH	Coos County Sheriff	(603) 788-5598	
Security	Twin Mountain, NH	New Hampshire State Police	(603) 846-3333	
Security	St. Johnsbury, VT	Caledonia County Sheriff	(802) 748-6666	
Security	Derby, VT	Vermont State Police	(802) 766-2211	

**FIGURE 2.14 (Cont'd)
EXTERNAL NOTIFICATION REFERENCE**

CONTRACTORS / SERVICES			
US ADDITIONAL RESPONSE RESOURCE			
SERVICE	LOCATION	COMPANY	OFFICE/ ALTERNATE
Spill Response Contractors	Bowe, NH	North Country Environmental Services	(603) 225-0579
Spill Response Contractors	South Portland, ME	Clean Harbors	(207) 799-8111 or (800) 526-9191
Spill Response Contractors	Lancaster, NH	Beattie	(603) 788-4035
Spill Response Contractors	Calverton, NY	National Response Corporation	(800) 899-4672 (24 hr)
Spill Response Contractors	Gilmanton, NH	Lakes Region Environmental	(603) 267-7000
Spill Response Contractors	South Burlington, VT	Environmental Products & Services	(802) 862-1212 800-977-4559*
Spill Response Contractors	Burlington, VT	ENPRO Services	800-966-1102*
Spill Response Contractors	Burlington, VT	ACCUWORX USA	(802) 522-7266
Portable Restrooms	Berlin, NH	Go Time	(603) 723-3636
Portable Restrooms	Gorham, ME	Royal Flush	(207) 892-0884
Storage and Disposal	Auburn, ME	Mid-Maine Waste Action	(207) 783-8805
Storage and Disposal	Hampden, ME	Pine Tree Land Fill	(207) 862-4200
Storage and Disposal	Norridgewock, ME	Waste Management of Maine	(800) 562-7779
Storage and Disposal	Elliot, ME	Aggregate Recycling Corporation (ARC)	(800) 639-7303
Storage and Disposal	Braintree, MA	Clean Harbors of Braintree, Inc.	(781) 849-1800 (800) OIL-TANK*
Storage and Disposal	Natick, MA	Clean Harbors of Natick, Inc.	(800) 645-8265
Storage and Disposal	Milan, IL	Eldred Corp.	(309) 787-3640
Storage and Disposal	Ramsey, NJ	Aerotech Labs	(800) 526-5330
Storage and Disposal	Long Island City, NY	Modutank, Inc.	(718) 392-1112

*24 Hour Number

RESOURCES US

**FIGURE 2.14 (Cont'd)
EXTERNAL NOTIFICATION REFERENCE**

CONTRACTORS / SERVICES			
US ADDITIONAL RESPONSE RESOURCE			
SERVICE	LOCATION	COMPANY	OFFICE/ ALTERNATE
Storage and Disposal	Wooster, OH	Seaman Corp.	(330) 262-1111
Storage and Disposal	Madison, ME	Anson-Madison Sludge Landfill	(207) 696-3246
Storage and Disposal	Norridgewock, ME	CWS Waste Management	(800) 244-8290 (207) 634-2714
Storage and Disposal	Millinocket, ME	Katahdin Paper Company	(207) 723-5131 Ext. 1278
Storage and Disposal	Berlin, NH	Mt. Carberry Landfill	(603) 752-4596
Storage and Disposal	Madawaska, ME	Fraser Paper-Sludge Landfill	(207) 728-3321
Storage and Disposal	Washington, ME	Marriners, Inc.	(207) 845-2313
Storage and Disposal	Presque Isle, ME	Presque Isle Landfill	(207) 764-2541
Storage and Disposal	Fort Fairfield, ME	Tri-Community Landfill	(207) 473-7840
Storage and Disposal	Orrington, ME	Penobscot Energy Recovery	(207) 825-4566
Storage and Disposal	Portland, ME	Regional Waste System	(207) 773-6465
Storage and Disposal	S. Portland, ME	Clean Harbors Environmental Services	(207) 799-8111
Storage and Disposal	Portsmouth, NH	United Oil Recovery	(603) 431-2420
Storage and Disposal	Varies	State of Maine, DEP	(800) 482-0777
Wildlife Rescue and Rehabilitation	Woodstock, VT	Vermont Institute of Natural Science-	(802) 457-2779 Ext. 125 (802) 359-5001 Ext. 212
Wildlife Rescue and Rehabilitation	Fairfield, CA	International Bird Rescue Research Center	(707) 207-0380
Wildlife Rescue and Rehabilitation	Newark, DE	Tri-State Bird Rescue	(302) 994-7578 (302) 737-9543
Wildlife Rescue and Rehabilitation	Fairfax, VT	Vermont Wildlife Rehabilitation Association	(802) 879-4449

RESOURCE US

**FIGURE 2.14 (Cont'd)
EXTERNAL NOTIFICATION REFERENCE**

CONTRACTORS / SERVICES			
US ADDITIONAL RESPONSE RESOURCE			
COMPANY	LOCATION	SERVICE	OFFICE/ ALTERNATE
The following resources have been identified as being capable of providing services and/or equipment to specific locations along the pipeline.			
SOUTH PORTLAND STATION			
Dragon Products	Frenchville, ME	Concrete Plant	(207) 543-7775
Cianbro Corp.	Pittsfield, ME	Contractors & Equipment	(207) 487-3311 or (207) 773-5852
Maietta Construction Inc.	Scarborough, ME	Contractors & Equipment	(207) 883-9546
Cote Crane Service	Auburn, ME	Contractors & Equipment	1-800-696-6282 1-207-783-0561
Portland Harbor Fuel Co. Inc.	Portland, ME	Contractors & Equipment	(207) 772-3232
Portland Tugboat LLC.	Portland, ME	Contractors & Equipment	(207) 774-2902
RAYMOND STATION			
Rogers, ML Inc.	Windham, ME	Contractors & Equipment	(207) 892-4532 (DAY) (b) (6) [REDACTED]
Wilson Excavation	North Waterford, ME	Contractors & Equipment	(207) 583-4632
NORTH WATERFORD STATION			
Wilson Excavating	North Waterford, ME	Contractors & Equipment	(207) 583-4632 (b) (6) [REDACTED]
Pike Industries	North Waterford, ME	Contractors & Equipment	(207) 583-4721
Town of Bethel	Bethel, ME	Contractors & Equipment	(207) 824-2669
Richard Douglas	Bethel, ME	Contractors & Equipment	(207) 824-2795
Beattie Enterprises	Lancaster, NH	Contractors & Equipment	(603) 788-4035
Dennis Wilson	Bethel, ME	Contractors & Equipment	(207) 824-4656

RESOURCES US

**FIGURE 2.14 (Cont'd)
EXTERNAL NOTIFICATION REFERENCE**

RESOURCES US

CONTRACTORS / SERVICES			
US ADDITIONAL RESPONSE RESOURCE			
COMPANY	LOCATION	SERVICE	OFFICE/ ALTERNATE
SHELBURNE STATION			
Gorham Sand & Gravel	Gorham, NH	Contractors & Equipment	(603) 466-2291
Town of Gorham	Gorham, NH	Contractors & Equipment	(603) 466-3302
Beattie Enterprises	Lancaster, NH	Contractors & Equipment	(603) 788-4035
LANCASTER STATION			
Beattie Enterprises	Lancaster, NH	Contractors & Equipment	(603) 788-4035
SUTTON STATION			
Beattie Enterprises	Lancaster, NH	Contractors & Equipment	(603) 788-4035

**FIGURE 2.14 (Cont'd)
EXTERNAL NOTIFICATION REFERENCE**

HOTELS / LODGING			
US ADDITIONAL RESPONSE RESOURCE			
HOTEL/FACILITY	ADDRESS	RESOURCES	CONTACT INFORMATION
PORTLAND / SOUTH PORTLAND			
Maine Motel	606 Main Street South Portland, ME	Rooms	(207) 774-8284
Budget Inn of Portland	634 Main Street South Portland, ME	Rooms	207) 773-5722
Anchor Motel	715 Main Street South Portland, ME	Rooms	(207) 775-9011
Travelodge Portland	1200 Brighton Ave Portland, ME	Rooms	(207) 774-6101
Holiday Inn Express Hotel & Suites South Portland	303 Sable Oaks Drive South Portland, ME	Rooms, meeting facilities	1 866 270 5110
Portland Marriott	200 Sable Oaks Drive South Portland, ME	Rooms, meeting facilities	(207) 871-7950
Doubletree by Hilton	363 Maine Mail Road South Portland, ME	Rooms, meeting facilities	(207)775-6161
Embassy Suites Hotels	1050 Westbrook Street Portland, ME	Rooms, meeting facilities	(207) 775-2200
Clarion Hotel Airport	1230 Congress Street Portland, ME	Rooms, meeting facilities	(207) 774-5611
Doubletree Hotel Portland, Maine	1230 Congress Street Portland, ME	Rooms, meeting facilities	(207) 774-5611
Holiday Inn Portland-By The Bay	88 Spring Street Portland, ME	Rooms, meeting facilities	(207) 775-2311
Portland Harbor Hotel	468 Fore Street Portland, ME	Rooms, meeting facilities	(207) 775-9090
Holiday Inn Portland-West	81 Riverside Street Portland, ME	Rooms, meeting facilities	1 866 270 5110
Motel 6	1 Riverside Street Portland, ME	Rooms	(207) 775-0111
Howard Johnson Plaza Hotel	155 Riverside Portland, ME	Rooms, meeting facilities	(207) 774-5861

RESOURCES US

**FIGURE 2.14 (Cont'd)
EXTERNAL NOTIFICATION REFERENCE**

HOTELS / LODGING			
US ADDITIONAL RESPONSE RESOURCE			
HOTEL/FACILITY	ADDRESS	RESOURCES	CONTACT INFORMATION
RAYMOND STATION (See Also Portland Hotels)			
Maplewood Inn & Motel	Raymond, ME	Rooms	207) 655-4639
White Pines Inn at Sebago Lake	1262 Roosevelt Trail Raymond, ME	Rooms	207) 655-3345
Windham Way Motel	1111 Roosevelt Trail Windham, ME	Rooms	(207) 892-4762
Alyssa's Motel	11 Roosevelt Trail Casco, ME	Rooms	(207) 655-2223
Maplewood Inn & Motel	Casco, ME 04015	Rooms	207) 655-4639
Migis Lodge	30 Migis Lodge Road South Casco, ME	Rooms	(207) 655-4524
Northeastern Motel	322 Roosevelt Trail Windham, ME	Rooms	(207) 892-4834
Microtel Wyndham Inn & Suites	965 Roosevelt Trail Windham, ME	Rooms, meeting facilities	(207) 893-8870
NORTH WATERFORD STATION			
Waterford Inn	258 Chadbourne Road Waterford, ME	Rooms	207) 583-4037
Pleasant River Motel	RR 2 West Bethel, ME	Rooms	(207) 836-3575
Lake House	Rtes. 35 & 37 Waterford, ME	Rooms	(207) 583-4182
Bethel Spa Motel	88 Main Street Bethel, ME	Rooms	(207) 824-3341
River View Resort	357 Mayville Road Bethel, ME	Rooms	(207) 824-2808
Norseman Inn	Bethel, ME	Rooms	(207) 824-0640
Snowcap Inn	9 Snowcap Lane Bethel, ME	Rooms	(207) 824-7669
Sudbury Inn	151 Main Street Bethel, ME	Rooms	(207) 824-2174
Chapman Inn	1 Mill Hill Road Bethel, ME	Rooms	(207) 824-2657
Rostay Inn	186 Mayville Road Bethel, ME	Rooms	(207) 824-3111

**FIGURE 2.14 (Cont'd)
EXTERNAL NOTIFICATION REFERENCE**

HOTELS / LODGING			
US ADDITIONAL RESPONSE RESOURCE			
HOTEL/FACILITY	ADDRESS	RESOURCES	CONTACT INFORMATION
SHELburnE STATION			
Town & Country Motor Inn	Route 2 Gorham, NH	Rooms, meeting facilities	(603) 466-3315
Gateway	Route 2 Gorham, NH	Rooms, meeting facilities	603) 466-5069
MT Madison Motel	365 Main Street Gorham, NH	Rooms	(603) 466-3622
Traveler Motel	25 Pleasant Street Berlin, NH	Rooms	(603) 752-2500
Moose Brook Motel	65 Lancaster Road Gorham, NH	Rooms	(603) 466-5400
Royalty Inn	130 Main Street Gorham, NH	Rooms	(603) 466-3312
Colonial Comfort Inn	370 Main Street Gorham, NH	Rooms	(603) 466-2732
Gorham Motor Inn	324 Main Street Gorham, NH	Rooms	(603) 466-3381
Hiker's Paradise	370 Main Street Gorham, NH	Rooms	(603) 466-2732
LANCASTER STATION			
Cabot Motor Inn	Rt 2 Lancaster, NH	Rooms, meeting facilities	(603) 788-3346
Coos Motor Inn	209 Main Street Lancaster, NH	Rooms	(603) 788-5130
Lancaster Motor Inn	112 Main Street Lancaster, NH	Rooms	(603) 788-4921

RESOURCES US

**FIGURE 2.14 (Cont'd)
EXTERNAL NOTIFICATION REFERENCE**

RESOURCES US

HOTELS / LODGING			
US ADDITIONAL RESPONSE RESOURCE			
HOTEL/FACILITY	ADDRESS	RESOURCES	CONTACT INFORMATION
SUTTON STATION			
Lynburke Motel Inc	791 Main Street Lyndonville, VT	Rooms	(802) 626-3346
Comfort Inna and Suites	703 US Route 5 South Saint Johnsbury, VT	Rooms	(802) 748-1500
Changing Seasons Motor Lodge	Route 5 Lyndonville, VT	Rooms	(802) 626-5832
Holiday Motel	222 Hastings Hill Saint Johnsbury, VT	Rooms	(802) 748-8192
Yankee Traveler Motel	342 Portland Street Saint Johnsbury, VT	Rooms	(802) 748-3156
Colonnade Inn	28 Back Center Road Lyndonville, VT	Rooms	(802) 626-9316
Lakeview Cabins	West Burke Road Barton, VT	Rooms	(802) 525-4463
Lyndon Motor Lodge	6148 Memorial Drive Lyndon, VT	Rooms	(802) 626-3548
Derby Four Seasons	4412 US Route 5 Newport, VT	Rooms	(802) 334-1775
Canterbury Inn	46 Cherry Street Saint Johnsbury, VT	Rooms	(802) 748-5556

**FIGURE 2.14 (Cont'd)
EXTERNAL NOTIFICATION REFERENCE**

AIRPORTS & LANDING STRIPS			
US ADDITIONAL RESPONSE RESOURCE			
Airport	ADDRESS	RESOURCES	CONTACT INFORMATION
MAINE			
Portland International Jetport	1003 Westbrook Portland, ME	Aircraft Support Equipment & Services	(207) 828-1300
Biddeford Airport	88 Landry Street Biddeford, ME	Airport	(207) 282-1893
Auburn-Lewiston Airport	80 Airport Drive Auburn, ME	Airport	(207) 786-0631
Limington Airport Authority	Route 111 Limington, ME	Aircraft Modification & Overhaul, Airports	(207) 637-2121
Twitchell's Airport & Seaplane	40 Airport Road Turner, ME	Airport	(207) 225-3490
Millinocket Municipal Airport	152 Medway Road Millinocket, ME	Airport	(207) 723-6649
Bangor International Airport	207 Godfrey Boulevard Bangor, ME	Airport	(207) 992-4600
Eastern Slope Airport Authority	Layman Drive Fryeburg, ME	Airport	(207) 935-3657
Swans Field Airport	Rr 2 Box 2480 Dixfield, ME	Airport	(207) 562-7706
NEW HAMPSHIRE			
MT Washington Regional Airport	60 Airport Road Whitefield, NH	Airport	(603) 837-9532
Berlin Municipal Airport	Berlin, NH	Airport	(603)-449-2768
Manchester-Boston Airport	One Airport Road, Manchester, NH	Airport	(603) 624-6539
Nashua Airport Authority	93 Perimeter Road Nashua, NH	Airport	(603) 882-0661
Pease INTL Airport-Portsmouth	36 Airline Avenue Portsmouth, NH	Airport	(603) 433-6536
VERMONT			
Caledonia County State Airport	2107 Pudding Hill Road Lyndonville, VT	Airport	(802) 626-3353
Lakeview Aviation Newport State Airport	2628 Airport Rd Newport, VT	Airport	(802) 334-5001
Burlington International Airport	1200 Airport Drive S. Burlington, VT	Airport	(802)-863-2874

RESOURCES US

**FIGURE 2.15
EXTERNAL NOTIFICATION REFERENCE**

CONTRACTORS / SERVICES

CANADA ADDITIONAL RESPONSE RESOURCES

Service	Location	Company / Contact	Telephone Number
Aerial Patrol		Helicraft (Passport Québec Hélico)	450-464-5290
		Cargair	450-656-4483
		EID Air	450-534-0335 (b) (6)
Cranes		Armand Guay / Richard Ross	514-354-4420
Storage and Disposal	Anjou	Veolia Canada	514-645-1621 800-465-0911
	St-Amable	GFL Environmental Services	450-922-2200 888-922-3330 (24/7)
	Chambly	Veolia Canada	450-447-5252
	Tracy	Veolia Canada	450-746-0006
	Saint-Augustin-de-Desmaures Beloil	Safety-Kleen Canada Ltd	418-878-4570
	Brossard Ville Sainte-Catherine	Safety-Kleen (Quebec) Ltd Clean Harbors Qc.	800-669-5740 450-632-6640
Laboratories		Laboratoire d'environnement	514 332-6001
	Lachine	Maxxam Analytique Inc.,	877-706-7678
The following resources have been identified as being capable of providing services and/or equipment to specific locations along the pipeline.			
Highwater Station Area			
Construction	(Cowansville)	Excavation St-Pierre & Tremblay	450-266-2100 450-531-7380
		Julien Pouliot Excavation	450-292-3225 450-292-3010 (b) (6)
	(Lac Brome)	Roger Choinière Excavation	450-242-3959
		SIMDEV	(b) (6)
Security		GSTS Sécurité	(b) (6)
Saint-Césaire Station Area			
Construction	Farnham	Excavation C.M.R	450-293-5510
	Farnham	Laroche Excavation	450-293-6598

RESOURCES CANADA

**FIGURE 2.15 (Cont'd)
EXTERNAL NOTIFICATION REFERENCE**

CONTRACTORS / SERVICES			
CANADA ADDITIONAL RESPONSE RESOURCES			
Service	Location	Company / Contact	Telephone Number
Richelieu River Area			
Electricity Provider	Saint-Hyacinthe	Hydro-Quebec	450-771-3002/3003
Montreal Area			
Construction		Soudure Lessard	514-645-9446
		Black & McDonald	514-753-6671
		SIMDEV	(b) (6)
		Houle Excavation	514-643-3382 (b) (6)
Clean-up Contractors	Montreal-East	Veolia	514-645-4242
	Pointe-aux-Trembles	Veolia	514-645-1621 800-361-8920
	St-Amable	GFL Environmental Services	450-922-2200 888-922-3330 (24/7)
		Amnor	514-494-4242
	Montreal	Environnement Rive-Nord	450-430-8666 514-975-4478 866-430-8666
Electricity Provider	Metropolitan Area Montreal Area – Power Failure and Emergencies	Hydro-Québec	800-790-2424 514-387-6201
Equipment Rental		A-1 Rent-A-Tool	514-737-7666 (24 hour)
		Dickie Moore Rentals	514-333-1212 (24 hour)
		Simplex	514-331-7777 (24 hour)
Boating Equipment (Tugs, boat rental, etc.)		Ocean Towing Ltd	514-849-2221 514-849-5511 (24 hour)
		Montreal Boatman Ltd.	514-640-4970 (24 hour)
		Urgence Marine	514-640-3138 (24 hour)
Security and Fire Protection / Detection System		Signal	514-488-0790 (24 hour)
Security	Montreal	GSTS Sécurité	514-996-5021 (b) (6)

RESOURCES CANADA

**FIGURE 2.15 (Cont'd)
EXTERNAL NOTIFICATION REFERENCE**

MONTREAL MUTUAL AID INFORMATION						
Company	Responsible	Tel. 24 hour	Office	Home	Pager/Cell.	Fax
Suncor Energy, Inc. 11701 Sherbrooke St. Montreal-East H1B 1C3	(b) (6)					
Shell Canada 10501 Sherbrooke St. Montreal-East H1B 1B3		(b) (6)				
Valero Terminal 7000 Marien Montreal-East H1B 4W3					(b) (6)	
Enbridge Control Centre 10201 Jasper Avenue N.W. Edmonton, Alberta T5J 2J9	(b) (6)					
Montreal-East Fire Department 11371 Notre-Dame St. Montreal-East H1B 2W7	(b) (6)					
Ashland 10515 Notre-Dame St. Montreal-East H1B 2V1	(b) (6)					
A.I.E.M. 12500, Industriel P.A.T. H1B 5P5	(b) (6)					
SPVM Police Station 49 1498 Saint-Jean- Baptiste St. Pointes-aux-Trembles H1B 4A4	(b) (6)					
Indorama		(b) (6) 333				

RESOURCES CANADA

**FIGURE 2.15 (Cont'd)
EXTERNAL NOTIFICATION REFERENCE**

MONTREAL MUTUAL AID INFORMATION (Cont'd)						
Company	Responsible	Tel. 24 hour	Office	Home	Pager/Cell.	Fax
Chimie Parachem 3500 Broadway St. Montreal-East H1B 5B4	[REDACTED]	[REDACTED]	[REDACTED]	[REDACTED]	(b) (6)	[REDACTED]
Suncor Sulphur Plant 11450 Cherrier St. Montreal-East H1B 1A6	(b) (6)	[REDACTED]	[REDACTED]	[REDACTED]		
MELCC Emergency		[REDACTED]	[REDACTED]			(b) (6)
CCR Affinerie	(b) (6)	[REDACTED]			[REDACTED]	
Selenis		(b) (6)				

RESOURCES CANADA

**FIGURE 2.15 (Cont'd)
EXTERNAL NOTIFICATION REFERENCE**

HOTELS / LODGING/ MEETING ROOMS

CANADA ADDITIONAL RESPONSE RESOURCE

HOTEL/FACILITY	ADDRESS	RESOURCES	CONTACT INFORMATION
Missisquoi River Area - Quebec			
Des Appalaches	234 Maple St., Sutton, QC	14 rooms, meeting facility	450-538-5799
Horizon Hotel-Motel	297 Maple St., Sutton, QC	44 rooms	450-538-3212
La Paimpolaise Inn	615 Maple St., Sutton, QC	28 rooms	514-538-3213 800-263-3213
Les Rochers Bleus	550 Route 139, Sutton	22 rooms	450-538-2324
Le St-Amour Inn	1 Pleasant St. (corner Maple St.), Sutton, QC	8 rooms	450-538-6188
Owl's Head Inn	40 Mont Owl's Head Rd., Mansonville, QC	20 rooms	450-292-3342 800-363-3342
Owl's Head Hotel and Apartments	115 Panorama Rd., Mansonville, Qc	42 rooms	450-292-3318 800-363-3342
Station de Montagne au Diable Vert	168 Staines Rd., Sutton, QC	Dormitory & rooms for 15 persons	450-538-5639 888-779-9090
Missisquoi River Area – United States			
Black Flys Lodge	Montgomery, Vermont	18 rooms	802-326-4572 888-326-4572
Black Lantern Inn	Montgomery, Vermont	10 rooms	802-326-4507 800-255-8661
Dairy Centre Ent	Enosburg Falls, Vermont	15 rooms	802-933-2030
Jay Peak Resort	Route 242, Jay, Vermont	138 rooms	802-988-2611
Riverview Victoria Country Inn	Richford, Vermont	6 rooms	802-848-7054 800-715-2260
The Crossing Motel	14 Province St., Richford, Vermont	14 rooms	802-848-3393
The Inn On Trout River	Montgomery, Vermont	Rooms	802-326-4391

RESOURCES CANADA

**FIGURE 2.15 (Cont'd)
EXTERNAL NOTIFICATION REFERENCE**

HOTELS / LODGING/ MEETING ROOMS			
CANADA ADDITIONAL RESPONSE RESOURCE			
HOTEL/FACILITY	ADDRESS	RESOURCES	CONTACT INFORMATION
Richelieu River Area			
Comfort Inn Motel	96 de Mortagne Blvd., Boucherville	100 rooms, meeting facility	450-641-2880 800-267-3837
Auberge De la Rive Inn	165 Sainte-Anne Rd., Sorel	98 rooms, meeting facility	450-742-5691 800-369-0059
Governor Hotel – Charron Island	2405 Charron Island Rd., Longueuil	125 rooms, meeting facility	450-651-6510 888-910-1111
Handfield Inn and Motels	555 Richelieu Rd., Saint- Marc-sur-Richelieu	53 rooms, meeting facility	450-584-2226 450-990-0468
Hostellerie les Trois Tilleuls	290 Richelieu Rd., Saint- Marc-sur-Richelieu	41 rooms, meeting facility	450-856-7787 800-263-2230
Hostellerie Rive-Gauche	1810 Richelieu Rd., Beloeil	24 rooms, meeting facility	450-467-4477 888-608-6565
Le Transit Hotel-Motel	30 Brunet Rd., Mont-Saint- Hilaire	45 rooms, meeting facility	450-467-2222 800-467-2880
Mathieu Lusignan Sports Centre Loisirs	61 Benoit Square, Saint- Charles-sur-Richelieu	Meeting rooms	450-584-3484
Rouville-Campbell Manor	125 des Patriotes Rd., Mont-Saint-Hilaire	26 rooms, meeting facility	450-446-6060 800-714-1214

**FIGURE 2.15 (Cont'd)
EXTERNAL NOTIFICATION REFERENCE**

HOTELS / LODGING/ MEETING ROOMS			
CANADA ADDITIONAL RESPONSE RESOURCE			
HOTEL/FACILITY	ADDRESS	RESOURCES	CONTACT INFORMATION
Montreal Region			
Best Western Hotel National	7746 Taschereau Blvd., Brossard	114 rooms, meeting facility	450-466-6756 800-465-0041
Best Western Ville-Marie Hotel	3407 Peel St., Montreal	170 rooms, meeting facility	514-288-4141 800-361-7791
Governor Island Charron Hotel	2405 Île Charron, Longueuil	125 rooms, meeting facility	450-651-6510 888-910-1111
Holiday Inn Montreal Longueuil	900 St Charles E, Longueuil	142 rooms, meeting facility	450-646-8100 800-263-0159
Le Chablis Cadillac Motel	5800 Sherbrooke East St.	55 rooms, meeting facility	514-259-4691 800-369-4401
Le Prestige Sherbrooke Hotel	12555 Sherbrooke East St.	72 rooms, meeting facility	514-640-5500 877-918-5500
Quality Inn Hotel	8100 Neuville Av., Anjou	157 rooms, meeting facility	514-493-6363
Quality Inn Hotel & Suites	6680 Taschereau Blvd., Brossard	101 rooms, meeting facility	450-671-7213
Universel Inn	5000 Sherbrooke East St.	230 rooms, meeting facility	514-253-3365 800-567-0223
Auberge Royal Versailles	7200 Sherbrooke East St	132 rooms, meeting facility	514-256-1613 888-832-1416
WelcomInns Hotel	1195 Ampère St., Boucherville	116 rooms, meeting facility	450-449-1011 800-779-2659

**FIGURE 2.15 (Cont'd)
EXTERNAL NOTIFICATION REFERENCE**

AIRPORTS and LANDING STRIPS	
CANADA ADDITIONAL RESPONSE RESOURCE	
Name of Airport or Landing Strip	Telephone Number
Bromont Aerodrome, Bromont	450-531-6736 (emergency) 450 534-2324
Dorval International Airport Airport Security Emergency Airport General Information Line	514-420-5000 514-394-7377
Granby Heliport, Granby	
Heliports Montreal-Saint-Hubert (Helicraft) Montreal-Charron Island Montreal-Longueuil	450-468-3431 450-651-6510 450-651-4223
Highwater Landing Strip	Day: Evening:
Saint-Hubert Airport 5700 de l'aéroport Rd., Saint-Hubert	450-678-6030
Saint-Jean-sur-le-Richelieu Airport Chemin de l'Aéroport, Saint-Jean-sur-le-Richelieu	
Sherbrooke Airport 900 de l'Aéroport Rd., RR4, Canton Easton, Quebec	819-832-4314 819-570-2931 (Call-out number)
Sorel Airport	450-782-3188
OTHER REFERENCES	
ENVIRONMENT AND WILDLIFE RESCUE	
Committee on the Status of Endangered Wildlife in Canada (COSEWIC)	819-997-4991
Directorate of Natural Heritage and Lasting Development	613-237-1066 866-964-1066
WEATHER	
Environment Canada Weather	514-283-3010 1 800 463-4311
Environment Canada Weather Forecasts (one-on-one) Weather of Specific Locations	900-565-4455 900-565-4000
Road Conditions (from November 1 st to the end of April)	511

RESOURCES CANADA

This Page Intentionally Left Blank